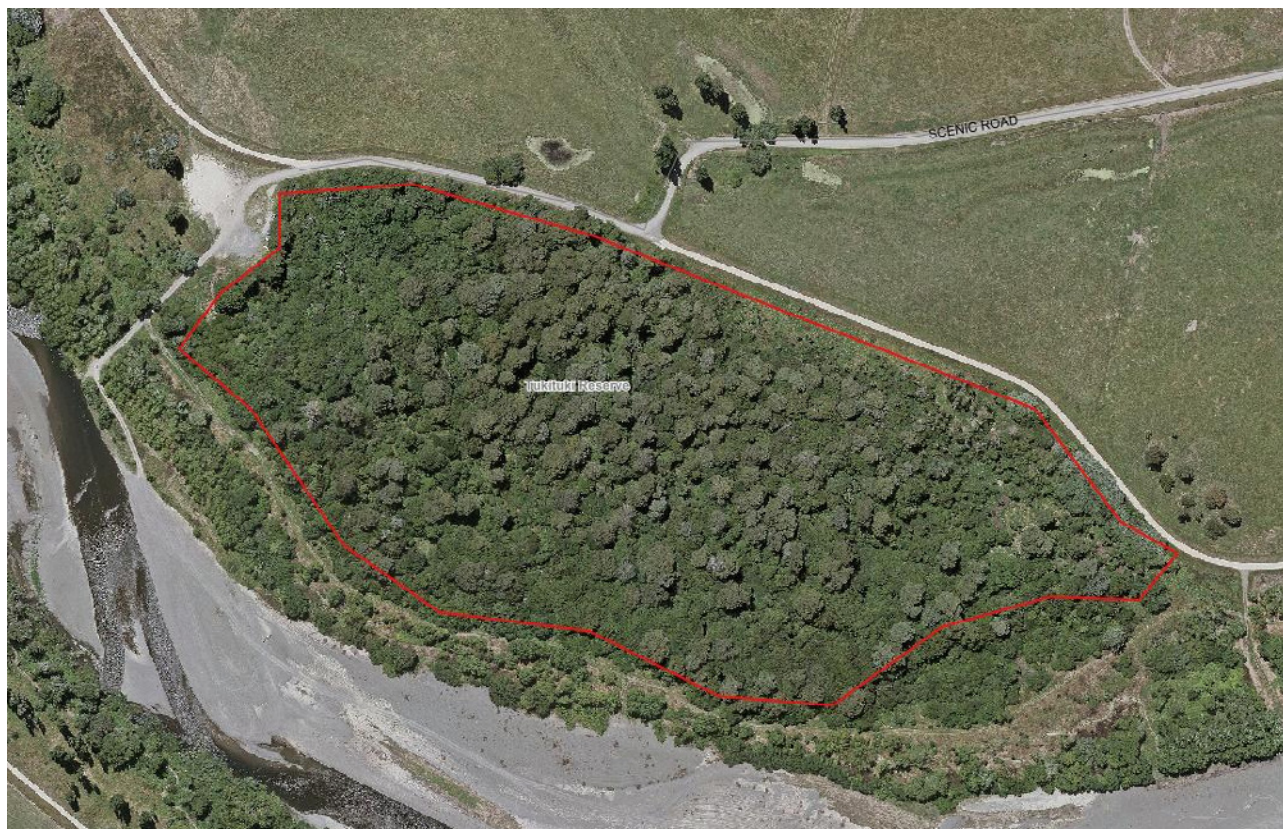


## 18.2 Ōtaia Bush/Lindsay Bush/Tukituki Scenic Reserve



<b>Reserve category</b>	Nature – Bush
<b>Reserve location</b>	End of Scenic Road , Waipukurau
<b>Area</b>	9.8 ha
<b>Reserves Act classification</b>	Scenic Reserve (Tukituki)
<b>Agreements</b>	MOU with Forest and Bird (developed in 2016, expires 2023)
<b>Facilities and use</b>	Native remnant forest (Kahikatea, Titoki, Tawa, Matai and Totara) Connects to the Tukituki Trails Picnic area Walkways River access point
<b>Management approach</b>	<ul style="list-style-type: none"> <li>• Memorandum of Understanding focusing on reducing non-native invasive species, improvements to the forest and increasing habitats for native fauna. Forest and Bird Management Plan in place to guide this</li> <li>• Continue to provide a maintenance grant to Forest and Bird for the Ōtaia (Tukituki Scenic) Reserve</li> <li>• Continue to work in partnership with Forest and Bird and Hawkes Bay Regional Council (who manage the river corridor and stop banks)</li> <li>• Provide amenities to support increasing number of users of the Tukituki Trails and ensure protection of conservation values. Upgrade carparking area with bollards to protect certain areas, public toilets and signage</li> <li>• Council is including the site as part of its Ngā Āra Tīpuna Project with cultural interpretive signage and digital storytelling</li> <li>• Improve signage on the rural roads to direct people to the reserve and ensure the road is maintained to an appropriate level of service</li> </ul>