



**NGĀ ARA TIPUNA**

Storytelling Trail

# NGĀ ARA TIPUNA

## Storytelling Trail Opening 2021

### Free Self-guided Experience

#### ABOUT NGĀ ARA TIPUNA

Ngā Ara Tipuna will see six historic pa sites in Central Hawke's Bay brought to life with vibrant displays, carvings and digital storytelling, showing the untold stories of pre-European Māori life in the district.

#### WHO HAS BEEN INVOLVED?

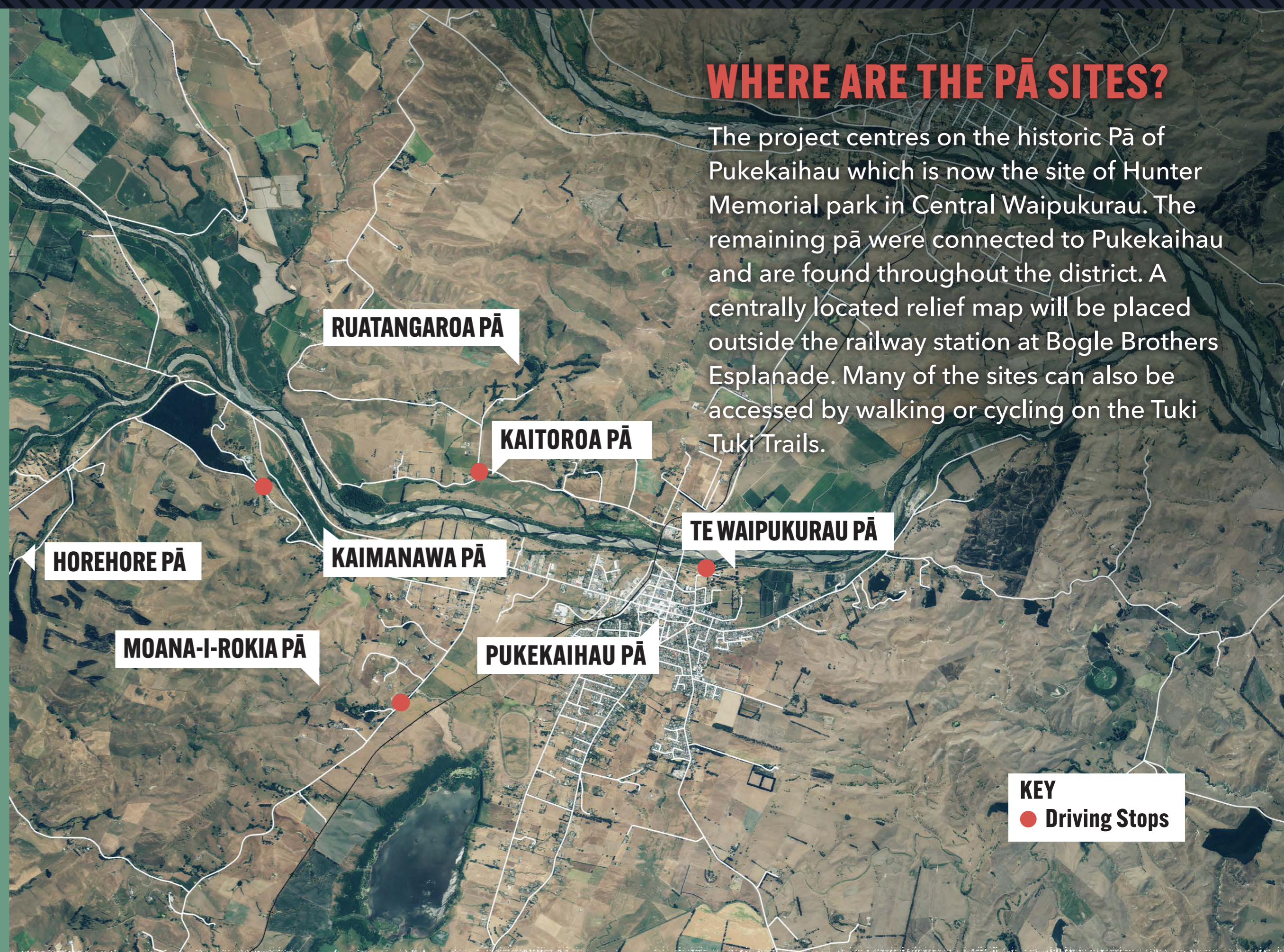
Ngā Ara Tipuna is a partnership between Tamatea Hapū, Te Taiwhenua o Tamatea and Central Hawke's Bay District Council. Award winning 'place-based storytellers' Locales have been engaged to manage and deliver the project. A governance entity (Charitable Trust) has been established to have ultimate ownership of the assets when they are created.

#### WHAT IS THE PLAN FOR THE FUTURE?

Once the first six Pa site are developed and opened to the public the project will look to connect to other pa and historic sites in the district. These could include Lake Whatuma and Te Taumata (The Worlds Longest Place name). The project team will also look to develop cultural tours and experiences for locals and visitors alike to experience the sites, although many of the places will be free to explore at any time and have digital content for you to view on your phone.

#### WHERE ARE THE PĀ SITES?

The project centres on the historic Pā of Pukekaihu which is now the site of Hunter Memorial park in Central Waipukurau. The remaining pā were connected to Pukekaihu and are found throughout the district. A centrally located relief map will be placed outside the railway station at Bogle Brothers Esplanade. Many of the sites can also be accessed by walking or cycling on the Tuki Tuki Trails.



Ngā Ara Tipuna will be a cultural and education treasure that the people of Tamatea/Central Hawke's Bay can be proud of. It will showcase our shared history and stories, and provide a place to share these stories with visitors to the district, as well as providing a valuable resource for teachers and students. This project is just the beginning in how we as a district tell and share our unique and vibrant history.

#### FUNDRAISING

The total project cost for this first phase of the project is \$3.8 Million. We secured \$2.8 Million from the Provincial Growth Fund in January this year, and thanks to several other funders (Central Hawke's Bay District Council, Eastern and Central Community Trust, Heretaunga-Tamatea Settlement Trust, and Lottery Environment and Heritage Fund) we are now only \$150,000 away from being fully funded. We are looking for community partners and corporate sponsors to help us achieve full funding for this project.

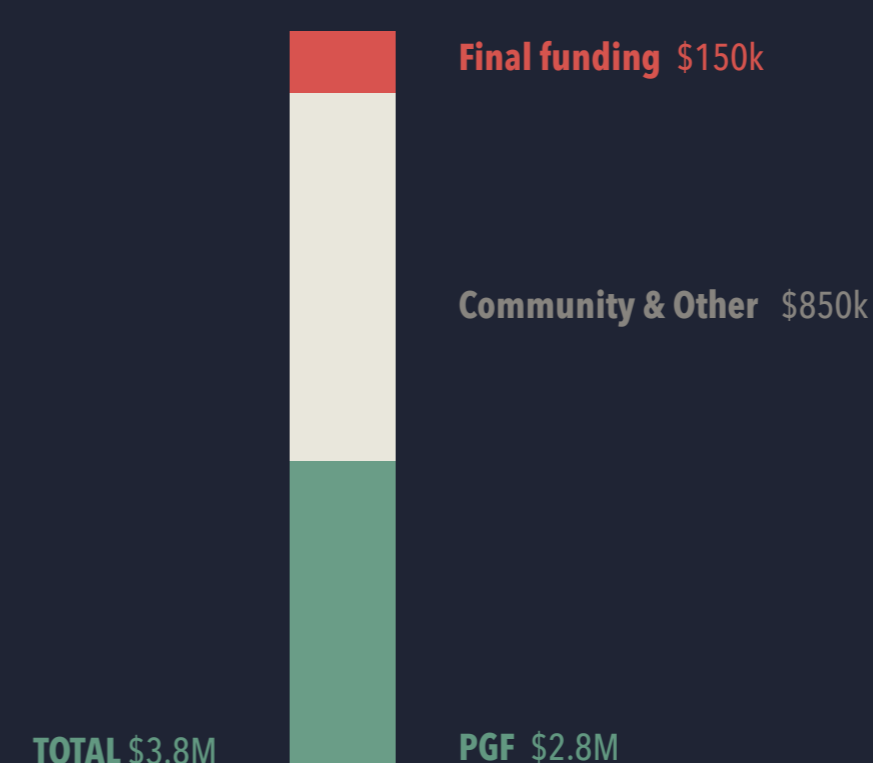
#### WHAT HAPPENS IF WE

##### DON'T GET THE FINAL FUNDING?

If we don't raise the last \$150k the project will still go ahead. We may have to delay a few of the final items until we do raise the money; for example, the landscaping, planting and park furniture (seats, rubbish bins etc.) on Hunter Park may have to be delayed until we find the money.

##### WHAT HAPPENS IF WE MANAGE TO GET MORE FUNDING THAN WE NEED?

Ideally we would like to raise over the \$150k we need to complete this project. This would mean that the Trust who will oversee the Pa sites can build some reserves to ensure that new digital stories can be told, and we will be able to get a start on what's next; for example an environmental centre at Lake Whatuma.



**Doug Tate**  
027 422 9977

**Phil Morris**  
022 130 6672



