



**CENTRAL  
HAWKE'S BAY**  
DISTRICT COUNCIL



# Together we thrive!

**Chief Executive's Report**  
Central Hawke's Bay District Council

*Together we Thrive! E ora ngātahi ana!*

## KIA ORA FROM THE CHIEF EXECUTIVE

### E ORA NGĀTAHI ANA – TOGETHER WE THRIVE.

This report provides an update of the organisation's activity over the February 2021 – March 2021 period and provides a snapshot of some of the organisation's achievements and activity over the period.

The Draft Long Term Plan 2021 – 2031 was adopted on the 11<sup>th</sup> February, and commenced formal consultation on the 1<sup>st</sup> March taking us through to the 31<sup>st</sup> March. The wider Council team moved into top gear to set us up for community consultation, and to ensure that the long term plan remains the most important piece of Council work up to its adoption in June 2021.

It is at this point that I wish to thank my staff for their tremendous efforts in supporting the consultation and engagement process. Their efforts and approach has not gone unnoticed.

Our focus now turns to the next stage of the process for the Long Term Plan 2021 – 2031, where Officers are preparing reports where we analyse the submissions and provide additional advice to Elected Members to support in the decision making process, throughout April, May and June.

And while in an organisation we are focused on facing the facts and planning for the future, while still delivering business as usual, as a sector we are facing uncertainty in the face of government reform initiatives.

**Three Waters Reform** - As you are aware, the Government's programme to reform the three waters services has an ambitious timetable. Since the reform was first announced mid-2020 – we've already seen two key pieces of legislation issued; (Taumata Arowai - the Water Services Regulator Bill, and the Water Services Bill). Together these provide the compliance and enforcement authority, and the new operational rules and standards necessary to reform the way three-water services are delivered across the country. The next key pieces of legislation will be Local Government (Three Waters Reform) Amendment Bill and a Water Services Entity Bill. The number of proposed water entities, their boundaries, the trade-offs involved, and the evolution of local government (because of the reforms) is). In March Council attended a Department of Internal Affairs Workshop held in Palmerston North. This workshop provided an opportunity for Elected Members to hear more about the progressing views of government, and to provide feedback on timeframes, process and ultimately how the reform programme could impact community outcomes.

**Resource Management Act Reform** - The Minister for Environment (MfE) David Parker announced the process for

the reform of the resource management system on 10 February 2021. This is Government's response to the findings and recommendations of the comprehensive review of New Zealand's resource management system led by former Appeal Court Judge Tony Randerson, published in July 2020. The Government has committed to repeal and replacement of the Resource Management Act 1991 (RMA) by the end of 2022. The RMA will be replaced with three new acts:

- Natural and Built Environments Act - to provide for land use and environmental regulation. This will be the primary replacement for the RMA.
- Strategic Planning Act - to integrate with other legislation relevant to development (e.g. land transport and climate change), and require long-term regional spatial strategies.
- Managed Retreat and Climate Change Adaptation Act - to address complex issues associated with managed retreat, and funding and financing adaptation. This will be managed by the Minister for Climate Change office.

The new legislation is intended to: be developed with pace, with the intent that all three pieces of legislation are passed by the end of 2022.

The pace of both the Three Waters Reform and the Resource Management Act reform presents risk for Council. While we are well placed to participate and engage in the conversation, capability and capacity for both Council and Iwi and hapu to engage, particularly as we progress into transition will be an ongoing challenge.

On a lighter note, I wish to at this point draw your attention to some of the updates in this Organisation Performance Report. Whether it be the celebration of Parks Week, the progress of our capital works programme, or the outstanding work been achieved through the Tukituki Trails and Marae Restoration Programmes there are so many examples of the power of Council in empowering a strong and connected community.

Telling these stories and sharing the success of this work is critical when interacting with government on the future for local government.

**Monique Davidson**

**Chief Executive**





**CENTRAL  
HAWKE'S BAY**  
DISTRICT COUNCIL

Our vision for Central Hawke's Bay is a proud and prosperous district made up of strong communities and connected people who respect and protect our environment and celebrate our beautiful part of New Zealand.

# Together we thrive!

Our Strategic Direction for Central Hawke's Bay

## What we know - Our DNA -



### WORKING TOGETHER

Central Hawke's Bay will be stronger when we work together. Partnerships and collaboration are at the core of everything we do.



### CUSTOMER EXCELLENCE

The communities we serve are our customers. They are at the heart of our decisions, interactions and communication. We'll engage with our customers to deliver value and exceed expectations.



### THINKING SMARTER

We need to think smarter and better in everything we do. With a culture of innovation and continuous improvement we will add value to our communities.

## What we stand for - Our Values -



Our values capture who we are and what matters most to us. They are the attitudes we embrace as individuals, teams and as a whole organisation. We are all personally responsible for acting with these in mind.

- T** TRUST - We create trust by acting with integrity.
- H** HONESTY - We do what is right even when no one is looking.
- R** RESPECT - We have respect for each other, our community and our stakeholders.
- I** INNOVATION - We find smarter ways to do things to produce improved and sustainable results.
- V** VALUING PEOPLE - We are one team, supporting each other to succeed.
- E** EXCELLENCE - We deliver exceptional results.

## What we're most proud of - Our Greatest Asset -

People are our greatest asset. At Central Hawke's Bay District Council we are committed to providing a safe and great place to work that values diversity and inclusion, and develops skilled people who can lead our community to thrive.



## Why we do what we do - Our Purpose -

It's our goal to create an environment that supports a thriving Central Hawke's Bay district, by providing efficient and appropriate infrastructure, services and regulatory functions.



## The outcomes we want to achieve - Our Objectives -



- A proud district.
- A prosperous district.
- Strong communities.
- Connected citizens.
- Smart growth.
- Environmentally responsible.
- Durable infrastructure.

## How we'll reach our outcomes - Our Focus -



- Promoting smart growth.
- Attracting and enabling business success.
- Strengthening our district and community identity.
- Protecting and promoting our unique landscape.
- Planning for tomorrow to future-proof Central Hawke's Bay.

# Activity

## Updates



### SOCIAL AND ECONOMIC DEVELOPMENT

#### Central Hawke's Bay Cross-Agency Triage Project

The Central Hawke's Bay Cross-Agency Triage project ended on 4 December 2020 and subsequently the contracted support to assist in the Community Development portfolio has now ceased. A project report has been completed and presented to the Community Reference Group and discussions are now underway with Government agencies regarding potential future funding so that the Central Hawke's Bay Cross Agency Triage model can continue to be delivered in the community.



#### Safer Central Hawke's Bay

The first gathering of the wider Safer Central Hawke's Bay Coalition for 2021 was held on Thursday 11 March, where members came together for the annual planning workshop. The workshop is a vital part of the collective planning for priority setting for the upcoming year and drew on available injury prevention data and trends, results from the Safer CHB priority survey collected in late 2020 and workstream workplan and input. Over 35 people attend the workshop from a wide range of organisations and their discussion and feedback will contribute to the formation of strategic priorities for 2021 and beyond. Two elected members and two staff from Tararua District Council participated in the workshop so that they could experience the planning session and Safer CHB continues to support them as they work towards becoming an accredited Safer Community.

Prior to the workshop all of the workstreams of Safer Central Hawke's Bay met to discuss their individual priority areas so that this could be incorporated into the wider strategic goals of the coalition. A key factor of the workstream planning was to identify opportunities to work across and engage with other networks including the Positive Ageing and Disability Reference Group.

#### Positive Ageing

The Positive Ageing Forum have met twice during this reporting period and have developed a workplan for the upcoming year.

The group received an update from St John on the transition of the provision of community transport from Red Cross from 18 January 2021. The network have played an integral part in communicating this change to the community and promoting the service amongst their members and clients.

The issue of bank closures in the district continues to cause concern and a number of the agencies had members or clients attend DORA Digital Banking Hub during its two week visit to Central Hawke's Bay. Further digital enablement programmes, both in our libraries and via outreach, are being planned to assist the older cohort with this issue.

The network also hosted an Elder Abuse and Neglect workshop on Friday 26 February 2021. Delivered by the Elder Abuse Response team from Age Concern, 22 people attended and were able to gain insight into the challenges that some older people can be faced with and skills to recognise and report elder abuse or neglect to the appropriate agency.

#### Disability Reference Group

The Disability Reference Group have met once during this reporting period with separate meetings being held by the focus group working on the Beach Wheelchair project. The focus group are now working on fundraising for a beach wheelchair that will be available to residents and visitors to the district following on from the positive feedback and support for this initiative from the public survey.

A Disability Responsiveness workshop was held on Tuesday 9 March with 14 participants from Central Hawke's Bay District Council, community organisations and businesses attending the two hour session. Participants learnt the difference between impairment and disability and were able to examine and challenge their assumptions about disability. They then identified tangible actions that they could take back to their organisations or business which would enable them to be more responsive to those people in our community living with disabilities. Further workshops are planned. More workshops are planned for early 2021. These workshops will initially be at introductory level and be open to all interested organisations, businesses and community members.

## COMMUNITY FUNDING

### Creative Communities Fund

The latest Creative Communities Fund round opened on 1 February 2021 and closed on 19 February 2021. The fund was promoted through a variety of communication channels and 13 applications were received, some of which were new applications. The panel are meeting to review these applications and distribute just over \$15,000 on Wednesday 24 March 2021.

### Community Voluntary Organisation Support Fund (CVOS)

The next round of CVOS funding will open in July 2021.

### Community Pride and Vibrancy Fund

Two Community Pride and Vibrancy Applications have been received in this period:

#### The Old Dairy Factory – Charlie Chaplin Silent Movie

This is a community event being held in Russell Park where a Charlie Chaplin silent movie is played on a big screen and this is accompanied by live music. This is open to all of community and with the support of Community Pride and Vibrancy is a free event. This event was originally scheduled during Parks Week however due to a change in COVID levels has been rescheduled to Easter Weekend in April. The Community Pride and Vibrancy fund contributed \$3,000 towards the event.

#### Readers and Writers – Between the Lines

This is a four day festival made up of ten readers and writers events across Central Hawke's Bay. The festival allows local Central Hawke's Bay authors to be showcased and was sold out last year. The Community Pride and Vibrancy Fund will support a free event which is open to all of community held at the Waipawa Museum which celebrates Hawke's Bay and Central Hawke's Bay authors plus poetry and music. \$1,000 was contributed towards this event.

### Sport New Zealand Rural Travel Fund

On 21 January 2021, 12 applications to the Sport New Zealand Rural Travel Fund were reviewed by Council and Sports Hawke's Bay. 11 applications were supported which will allow local clubs and schools to assist with the costs involved in travelling to regular sporting events. A total of \$9,309.00 was distributed.

### Cultural Engagement – Tuhono mai Tuhono Atu

The primary focus for Councils Pou Whatua has been turning Tuhono mai Tuhono Atu into a plan for implementation and beginning the formation of relationships across the District and wider region.

Other priority areas for Cultural engagement have included:

- preparing for and beginning to implement components of the cultural competency framework into our council work culture
- District Plan engagement with iwi and hāpu
- three water project engagement with iwi and hāpu
- Supporting the continued establishment of capacity and capability within local Maori infrastructure.

#### Te Kupenga

The Te Kupenga application is a resource developed by the Maori specialist's teams within the 5 Councils across the Hawkes Bay region. Available from the app store for free, the app provides 1500 staff across councils with the ability to learn basic Te Reo Maori and Te Ao Maori concepts. The app was launched on Monday the 22 of Feb across the region.

## ECONOMIC DEVELOPMENT



## Economic Recovery

The projects initiated from funding gains we have secured from the Crown Infrastructure Partners Fund and the Provincial Growth Fund are now well under way.

Over the February March period, work on the Tuki Tuki trails has pushed ahead. Some outstanding work has been achieved from a hard working crew across what could only be described as challenging terrain. The end is getting closer and we can already see what an incredible opportunity will be created for our community for access to our pristine environment. Further, this valuable asset will provide a significant addition to Central Hawkes Bay as a tourist destination

The \$400k regional digital hub project has progressed and we are now reviewing working drawings for renovation of the 4 Bogle Brothers Esplanade site. This will become a very significant asset in our community by providing a place of learning in a relaxed environment and also a 'Hub' for small business development and enhancing the skills of the local community.

The PGF funded vegetation management programme has been completed, with several workers from this programme going on to full time, sustainable employment.

## Jobs in Central Hawke's Bay - Turanga Mahi ki Tamatea

The Jobs in Central Hawke's Bay team has continued to work with people in our community who are job seekers to obtain long term sustainable employment.

Our Mobile Employment Hub is all fitted out now and working fantastically. Enabling our team to spend more time out and about connecting with the public. We continue to have regular weekly hubs in Waipukurau and Waipawa, and alternate between Porangahau and Takapau fortnightly.

We continue to meet new job seekers, we have had 27 new referrals this month!





**Some of our current initiatives are:**

Business After 5 - Reviving these sessions for business to network and connect with a further meeting held on Tuesday 23 March.

Skills, Training and Employment Network –the network is a platform to talk about what’s happening within Central Hawke’s Bay, primarily relating to barriers and opportunities for training, skills and employment. This network meets six weekly and is made up local organisations such as Complete Coaching HB, CONNECT Driving Licensing, Learning Innovations, CHB Budget Advisory Service and many more.

Seasonal Employers Expo – Jobs in Central Hawke Bay facilitated the Seasonal Employment Expo where 40 jobseekers attended to connect directly with seasonal employers such as Mr Apple, Bostock, Pasture Petfoods and Silver Fern Farms..

Collaboration with the Project Management Office – working closely with Councils PMO so that those looking to tender for local contracts are coming to Jobs in Central Hawke’s Bay to find employees. Higgins (2 new employees), Concrete Structures (3 new employees) and Fulton Hogan (3 new employees to start in March/April) are currently working with us.

Building, Construction and Allied Trades level 2 (BCATS Level 2) - Partnership between Eastern Institute of Technology (EIT), Ministry of Social Development (MSD) and Jobs in Central Hawke Bay has been formed to deal with the challenges faced by the Trades industry (shortage in skilled workers) and the housing shortage we currently have locally. Jobs in Central Hawke are supporting with Boots on the ground - \$500 towards safety boots for participants who need them to ensure they can participate on the course, and further incentives planned throughout the course to maintain engagement working towards positive outcomes. This course will be followed by BCATS Level 3, Sub Trades Training Scheme, and an employer meet and greet.

Apprenticeship Support Workshops - Supporting local Apprentices to complete their apprenticeship. Offering weekly workshops based out of EIT for Apprentices to access support to work through their paperwork component of their apprenticeship. First workshop scheduled for 14 April.

## He Ringa Whānau Ora

He Ringa Whanau Ora was officially launched to the community on Wednesday 3 March 2021 after an initial period of development and design of the programme. A partnership project between Te Taiwhenua o Tamatea and Council, the project is funded for a two year period from the Ministry of Business, Innovation and Employment's Social Capital fund, funding that has been specifically allocated to address issues to strengthen the social capital of small communities.

The He Ringa Whānau Ora kaimahi will provide community-based support to address drug issues and intergenerational cycles of whanau harm in the most hard to reach whanau in Tamatea.

Specifically, the roles will:

- Support whanau to connect with support agencies through the Cross-Agency Triage forum or directly with agencies
- Act as community-based support workers to guide the most vulnerable in the community towards a path of rehabilitation
- Provide support and build on the capability and capacity of whanau to overcome methamphetamine and drug issues, provide career planning and improve their wellbeing.

- Guide whanau through a matauranga Māori lens to wellbeing; and
- Work with local connections to create sustainable employment outcomes, training and support which will enhance whanau wellbeing

The expected outcomes of the project are:

- Work with 50 whānau over two years
- Support 20 people into employment or training

## Ngā ara Tipuna ki Tamatea

This project continues to be a priority focus and is on track for project completion by mid-June 2021.

Physical works progress well, with site works over 75% complete across most sites ready for the installation of the structures and post markers at each site.

The project is experiencing delays in the operational aspects of the project, with significant delays from the Charities Office in the processing of both the IP and Operational Trust. Recruitment for the business development manager role for the project will also shortly commence.

## CENTRAL HAWKE'S BAY TOURISM

### Tourism

#### Tourism Infrastructure Needs Assessment

This report has now been adopted and is available to view on the CHBDC website. The Central Hawke's Bay Tourism Destination Plan and Need Assessment were funded by MBIE's Tourism Infrastructure Fund (TIF). Three priority projects from the assessment that are already underway or have been completed include:

#### Central Hawke's Bay Visitor Guide

This project is well under way and will be printed and ready for distribution on February 22<sup>nd</sup> 2021. There were delays with this project in selling advertising to local businesses. The booklet will consist of five "Journeys" based on the findings from the Tourism Infrastructure Needs Assessment as well as promoting 26 Central Hawke's Bay businesses.

#### Image Library development

Council continues to work to develop the Central Hawke's Bay image library to ensure there is a wide range of images to promote Central Hawke's Bay across a number of platforms. The photoshoot planned for Sunday 24<sup>th</sup> January 2021 was postponed due to wind and clouds at the beach. A new date has not been set but will likely take place later this month.

#### Gateway Signage

The southern gateway sign to Central Hawke's Bay had been damaged over the Christmas/New Year period. Both signs have now been replaced and align with the Hawke's Bay Tourism promotional campaign the "Hawke's Baycation"

#### Art Deco

The Art Deco Railcar will be visiting Waipukurau on Saturday 20 February and Otane Market on Sunday 21 February. This event will include market stalls, railcar rides and live music. The Central Hawke's Bay Vintage Car Club will be there on the Saturday for car rides and volunteers will be running heritage walks through Waipukurau Township.



## DRINKING WATER

### Drinking-Water Compliance

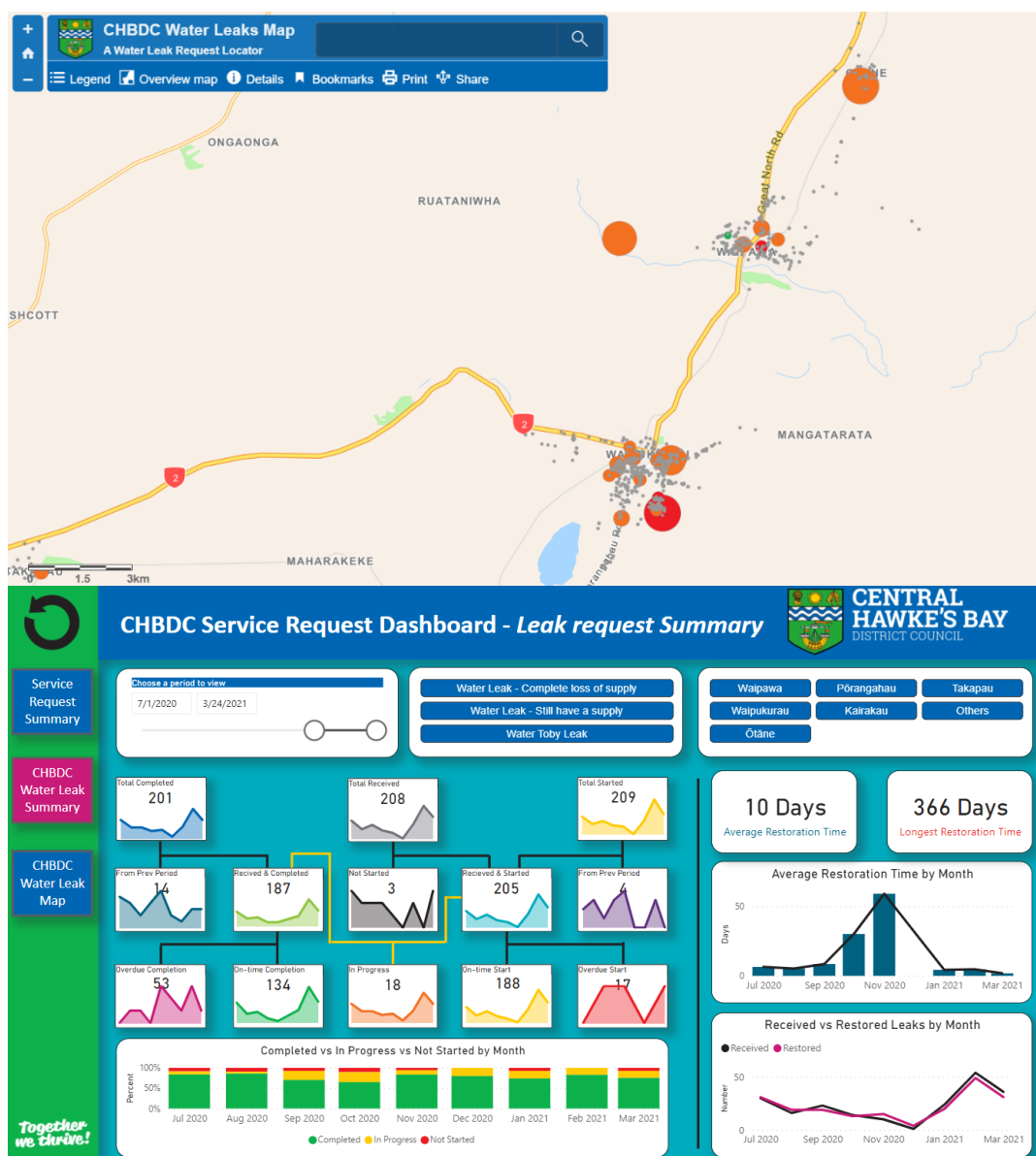
Drinking water compliance work through February and March has focussed on network changes being made in Waipawa to balance pressure and flows in the network. This has meant bringing online the Johnson St Treatment Plant which has been a lengthy process to ensure it is fully compliant with compliance requirements. The plant was successfully brought back online in mid-March with the Drinking Water Assessment Unit across all detail and happy with the outcome.

### Operational update



Water restrictions were relaxed at the tail end of March from Level 3 to Level 2 restrictions. The change reflects increasing river levels in both the Tukituki and the Waipawa. While rising, rivers are still low and require Council to maintain active measures to reduce our impact on them. Council are confident that this can be effectively completed through level 2 restrictions rather than level 3 and Council are further hopeful that forecast rain will see continued rises in river levels and an ability to remove all restrictions soon.

Leak repairs remain the focus of reticulation crews with continuing very high numbers of leaks putting strain on resources. Significant amounts of overtime are being completed by teams to manage leak volumes and additional resources have been budgeted for within planned budgets to bring in extra support. Further to additional resource, Council is seeking to improve its understanding and management of leaks and general reactive works through improved internal reporting and visibility. Several interactive dashboards are in development (illustrated below) providing real-time access to information on leak status, location and work trends over time. This work will be refined and shared formally with Council.



### Waipukurau Second Supply

We are making progress with this project, a recent update was given to Finance and Infrastructure Committee in late February 2021, including a site visit of the borefield where an investigatory bore was drilled and confirmed that sufficient water is available to move to a production bore – this is planned to be drilled late March 2021. Land negotiations for easement for pipelines and reservoirs is well underway as well as planning for the river crossing works.

Learn more and follow updates via: <https://www.chbdc.govt.nz/our-council/news/article/695/council-moves-to-next-stage-of-securing-greater-resilience-of-water-supply-for-waipukurau>

### **SH2 Borefield Upgrade**

The project has been delayed slightly as we iron out some commissioning and turbidity (air) risks at the site, involving either a run to waste system or a filtration system to remove turbidity whether real or air. This work is progressing as a priority to allow the upgrade to be finished and the system commissioned.

### **Kairakau Water Upgrade**

A community meeting was held as part of the Long Term Plan on Sunday 21<sup>st</sup> March as a follow up to the December 2020 meeting, Finance and Infrastructure Committee made a decision to progress the design in late February 2021. The project team are working on negotiating a lease and with neighbouring landowners to confirm the site layout.

### **Waipukurau Firefighting and Shortfalls**

Stage 3 of the work is now complete, officers have recently undertaken testing of the first 3 stages to validate and measure the improvements before progressing the design and programme of future stages of work. Council is currently investigating some firefighting opportunities as part of the Farm Road water scheme to alleviate the need to draw water from town in the event of a fire.

Stage 4 is planned to start in July 2021 and form a part of the procurement for Stage 1 and 2 of the Waipawa firefighting works.

### **Waipawa/ Otane Firefighting and Shortfalls**

The programme is currently being finalised before stage 1 and 2 are combined and will commence from July 2021.

### **Water Renewals**

Officers are currently forming a renewal work programme as we plan to significantly step up our work programme – including how we programme the renewals and deliver the increase in works by priority as set out in our asset management planning.



## **WASTEWATER**

### **Wastewater Treatment performance**

Following a request from HBRC in December for a more formal update on wastewater treatment plant performance, Council met with HBRC on 16th February and provided a formal written update on plant performance on 1st March. The update covered existing performance issues with the plants that are to be addressed through the planned long-term upgrades as well as some programmed shorter term operational enhancements.

To further improve operational performance at the plants in the short term, Council have engaged some external expertise on plant management to inform the operations staff.

### **Trade Waste Reviews and Improvements**

An improvement programme is underway largely supported by the Trade Waste bylaw review currently underway – this focusses on bylaw management operationally and revenue billing.

### **Waipawa, Waipukurau, Otane Wastewater Upgrade Consenting Project**

In October 2020, Council adopted a new wastewater strategy outlining the approach to be taken across the district. This is consistent and supports the progress being made across our six plants and three overarching projects. <https://www.chbdc.govt.nz/our-council/news/article/696/central-hawkes-bay-district-council-endorse-wastewater-strategy>. Ongoing engagement is planned and extensively covered as part of the Long Term Plan 2021.

### **Otane Wastewater Resource Consent**

An extension to the current resource consent is due to be lodged by the 31<sup>st</sup> March 2021 to align with the wider work programme for the larger project.

#### **Porangahau and Te Paerahi Wastewater Upgrade Consenting Project**

Our transitional consent has been lodged on the 26<sup>th</sup> February 2021. This has been accepted for processing by Hawkes Bay Regional Council. This will be superseded by a long term consent by 30 June 2021 that outlines the big picture approach – but is requiring an adopted long term plan confirming the funding and supporting the phasing. An agreement has been formed with the landowner, design is underway including cultural and archaeological assessment.

#### **Takapau Wastewater Upgrade Consenting Project**

Following further engagement, Council has an agreement with a landowner to investigate a land discharge scheme for the dry weather discharge from Takapau.



The consent is on track to be lodged by 30 April 2021, design is underway including a cultural impact assessment of the project.

The new screen and inlet works is completed.

## **STORMWATER**

### **Operational update**

During February and March planned open stormwater drain maintenance is occurring in Waipawa and Waipukurau. The work aligns with requirements under the District Stormwater Resource Consent and will see debris and vegetation removed from open drains and drains reprofiled. This work will improve the performance of the open drain network heading into wetter winter months.

Stormwater sampling was completed in February during a period of rain to meet the conditions of our resource consent. It is remaining to be challenging to meet the consent conditions for sampling with very few rain events meeting the levels needed to effectively sample in most areas. Council are working with HBRC to determine if the conditions of the consent can be altered to provide more flexibility when samples are taken.

Through February and March Council provided data to a Regional project on 'water accounting'. The project seeks to understand in detail the uses of all water across the Region from extraction and rainfall through various parts of the economy and infrastructure before it is returned to waterways or earth. The project will ultimately enable discussions about the 'value' of water to the Region. Council stormwater data has been supplied as part of the data-gathering exercise.



## **LAND TRANSPORT**

### **Regional Land Transport Plan**

Council staff and Elected Representatives have recently contributed to the Hawke's Bay Regional Land Transport Plan (RLTP) that is in its final stages of update for the 2021-31 period. The RLTP is an important document for Hawke's Bay outlining the regions transport services, needs and programme investment to bridge gaps and meet new and existing demand. Importantly, including key projects/programmes in the RLTP is an integral step in getting funding programmes endorsed by NZTA. CHBDCs representation in the RLTP in previous years has been artificially light. Significant effort has been made to ensure now that CHBDC is accurately represented in the RLTP which will now be part of formal regional communication and consultation exercise beginning in February 2021. This document has now been out for consultation and feedback is being considered

### **Waka Kotahi 3 Year Programme**



Council routinely requires approval/endorsement of the 3-year rolling work programme from Waka Kotahi. In agreeing the programme and the set Funding Assistance Rate (FAR – set through a separate process), Council and Waka Kotahi agree to the amount of funding to be received over the 3-year period. Waka Kotahi have signalled nationally a reduction is required in total spending through 2021. To date Council have not been notified formally of any reduction in our programme/funding and have been in close regular contact with the investment team at Waka Kotahi to ensure we are receiving regular and accurate updates. Waka Kotahi have advised Council that they are recommending internally on our behalf that we receive our full allocation of funding based on the confidence in our programme.

## **Contract Works 20 / 21**

### **Maintenance and Re-seals**

The maintenance and re-seals programme are progressing well with a significant volume of planned works completed through February and March with favourable weather. During the period the maintenance contract focussed efforts in rural areas completing grading and water-table works as well as culvert maintenance.

The re-seal programme began later than usual due to process issues between Council, the works contractor (Downer) and the design contractor (Stantec). These issues saw work not commencing until late in the sealing season (weather constraints). Despite the initial delays, the work programme has 'caught up' significantly with all listed re-seal sites to be completed prior to the end of March. Changes have been made to the overall process to ensure earlier completion of confirmed designs and earlier commencement of work for the 2021/22 season.

### **Bridges, Structures and Area Wide Pavement Treatments**

The AWPT contractor has completed one Site on Ugly Hill Road with great results and the consultant is working with them to get another site designed so it can be completed this fiscal year. The contractor has worked well with the contract manager and has offered suggestions which have enhanced the process. Engagement with the local affected community has been a priority through this work and has provided positive outcomes with good feedback from locals.

The structural contract has had numerous projects designed along with some minor works which have been completed. The major work will begin in late March and carry on until the end of the fiscal year. This work includes deck replacements for Tipene's Bridge, Te Roto Bridge, and Eparaima bridge which has involved working with the landowners around scheduling which introduced some delays to the expected work, so they experience the least disruption to their farming efforts. Again, the contractor has been in regular contact with the affected owners to ensure they are up to date as to what is scheduled and when.

The footpath contract is for 2 areas, the first is the extension of the footpath in Ongaonga to provide quality access to the museum. A meeting was held on site and information provided for community input. Higgins are donating time to install bricks to match the existing building entrances and the historical society is donating bricks. The second site is joining Mathew Street footpath to Abbotsford Road and construct as much footpath on Abbotsford as funding will allow. Our professional services consultant has created a staged plan to complete the Abbotsford footpath from end to end of the road, but progress will be slow as the construction is difficult and expensive due to the terrain in the area. This project will be a multi-year project due to funding restraints.



## **SOLID WASTE**

### **Levels of Service**

Embedding changes made through the later part of 2020 and early part of 2021 into operations is a focus for the team. Changes in collection zones, days and routes have been in place for a handful of months now and we are now seeing the benefits of this with no late or missed collections reported through February and March. Vehicle fleet remains a limiting factor in further optimising the kerbside collection services with investment in new fleet planned following adoption of LTP changes.

In March work to upgrade the glass bunker area in Waipukurau was completed with additional funding received from the Glass Packaging Forum. This completed work will go further to reducing contamination of glass at the facility and ensure that more product is recycled and diverted from landfill.



### Service Delivery Change

Changes to service delivery for refuse and recycling services are being consulted on through the LTP process with good levels of engagement to date. Several key themes are emerging through the feedback with a high degree of interest particularly in kerbside recycling services and drop off centres. Officers are preparing a summary of feedback to take to Council to inform decisions that will be implemented following July 1. Officers are also working with contracting partners to ensure the roll out of any changes is planned for with as much notice as possible.

### Waste Free CHB

A more detailed update on waste Free CHB was provided to the Strategy and Wellbeing Committee in March. The update included detail on progress and priorities under four key headings that make up Wastefree CHB (Operations, Programme and Events, Community/Partnerships, Communications and Engagement). The update presented the diagram below which illustrates the diversity of the Wastefree CHB umbrella.



### Leachate to Landfill

Pleasingly we have received a new consent (short term – 3 years), which allows the discharge of groundwater to the onsite farm pond. A meeting was held onsite with our contractor in January 2021, unfortunately the contractor is unable to return to the project in a reasonable timeframe. As such, officers have reached out to another contractor to price and complete the project. Works are expected to start by mid to end of April 2021 and be completed by the end of June 2021.



## CONSENTS

Consent application numbers have continued to increase with 50% more received in February and March compared to the same period last year. With the assistance of external contractors for processing, we are for the most part managing to achieve agreed service levels and high-quality customer service. Being available to respond to customer queries remains a high priority.

### Data on consent volumes from the reporting period

#### Building Consents:

Total consents: 79  
 New dwellings: 23  
 Total value: \$10,357,520

#### Resource Consents:

Total consents: 53  
 Number of new lots created: 154

This represents another year of unprecedented growth for our District and we are relying heavily on the good work within our team as well as our consultants, National Processing Ltd, WSP and Stantec.

The growth in consents is expected to continue and the workload increase as we work our way through the implementation of the new LTP and the proposed District Plan at the end of May 2021.

A summary of consenting volumes and value compared with the previous year is provided below. The data for 2020/21 is year to date data.

Building Consents	2019 - 2020	2019 - 2020 (YTD)	2020 - 2021 (YTD)	No. Change (YTD)	% change (YTD)
Volume	419	245	263	+18	7.3%
New dwellings	125	88	108	+20	22.3%
Total \$value	\$61.4M	\$39.4M	\$44.0M	\$4.6M	11.5%
Commercial \$value	\$0.5M	\$0.850M	\$8.8M	\$7.95M	935.3%

Resource Consents	2019 - 2020	2019 - 2020 (YTD)	2020 - 2021 (YTD)	No. Change (YTD)	% change (YTD)
Volume - applications	219	146	201	+55	37.7%
Volume - approved	181	120	162	+42	35.0%
No. new lots created	332	287	440	153	53.5%

#### Resourcing:

There remains a heavy reliance on external consultants for processing of both building and resource consents with one Building Consents Officer and two Planner vacancies. The Cadet Building Consent Officer role was filled late December and this is adding valuable and measurable resource to the building control team. This Cadet is now on a pathway to be fully accredited as a Building Control Officer. National Processing is currently processing 90% of new builds while staff are focusing on



inspections which are unable to be outsourced. WSP and Stantec are processing approximately 95% of new Resource Consent applications.



## EMERGENCY MANAGEMENT

The Incident Management Team were activated on 5 of March after three moderate Earthquakes. It was good to see the first early morning earthquake reached most peoples 'long or strong' threshold and some of the Coastal Communities self-evacuated. The second and third earthquake was not felt in Central Hawke's Bay but did cause a beach and marine Tsunami threat and the subsequent evacuation of Tsunami red zones across Hawke's Bay. The debrief for this event will be held on 29 March 2021.

Fixed radios have been installed into the mobile Emergency Operations Centre with the expectation that this project will be finished by the end of March.

East Coast LAB and CDEM are holding an emergency preparedness workshop for Principals and Board of Trustees for CHB Schools to better understand and plan for sudden onset risks.

We are raising staff capability and depth with four more staff going through the two day Coordinated Incident Management System training in March and more booked into this training course later in the year.



## PLACES AND OPEN SPACES



Parks Week is held over 9 days in early March each year. The week celebrates the vital role parks and open spaces play in positively influencing our wellbeing and creating liveable and thriving communities. This year was the second year for Council to be involved and a number of events were planned:

- Silent Movie LIVE, which received Community Pride and Vibrancy funding, was postponed due to the Covid Alert level 2 restrictions until Good Friday evening, 2 April.
- Fortunately, alert levels were downgraded for the Sunday of Parks weeks and due to a number of community groups being involved, Children's Day was an enormous success
- During the week we promoted a number of parks and debuted the newly updated Parks and Reserves pages on the Council's website. The Team also celebrated Parks week with Recreational Services and their contributions with a barbecue.
- Nature Connect at Otaia/Lindsay Bush and Mid-day Music at Ongaonga Museum Reserve also occurred as part of the delayed week of celebration.



## Waipawa Pool Closed for season

Whether the impact of Covid Alert Level 2 or cold night temperatures and inconsistent warm sunny days, the Waipawa pool has not had a good summer. Unlike last summer, the pool has rarely got to its recommended baseline of 19°C and even if we had a number of warm autumn days, the low night time temperatures will limit the amount the amount of heat the body of water can maintain.

When open during the warm periods, the pool was well attended regularly receiving strong crowds and attendances.

## Playground Tidy-ups

Finally, some key safety improvements to our playgrounds are underway. As of writing Otane playground's safety surface tiles and swingset are being replaced after coming to the end of their useful life.

Not only have we contended with a national shortage of engineered wood fibre due to Covid-19 and a lack of shipping containers arriving in New Zealand (and therefore lack of pallets from which cushion fall is made from), but the Napier floods, meant that a large number of playground surfaces needed refilling as well that were prioritised by suppliers.

Nelly Jull and Takapau are other playgrounds where safety surface areas are being adjusted to improve the fall zones. They along with Russell Park are getting safety mats added to high use areas (eg. under swings) and topped off with a quality engineered wood fibre (EWF) that is accessible by prams and those using wheelchairs.

## Central Hawke's Bay Libraries

February and March have been exciting times for the libraries as we have benefited from Covid Recovery Funding through National Library for two years until June 2022. We have been able to create two new roles - a Digital Inclusion Co-ordinator's Role and the role of He Kura Kainga Co-ordinator, these positions have been filled by Cleavelin Cook and Te Rangimarie Ngarotata.

We were then given the opportunity to apply for more funding for enriching and growing librarianship and libraries. This has enabled us to second from existing staff and increase hours to 1 FTE. These 40

hours cover 20 hours weekly in an outreach role, and a total of 20 hours on in-house training and upskilling staff.

We have continued to apply for funding and in total have received on top of the staffing, funding for programming, laptops, arts and crafts tools, an increase in the Maori collection, professional development the new staff.

We have also received funding for a new digital platform Re-Collect to replace Kete which is no longer supported, and records our local history. This funding has been increased to allow us the capability to make this a mobile service to collect our local history, our oral history, photographs, videos right across our entire district – this will truly give us the ability to record our heritage – never forgetting that to make this collection of our local history we must also record today's stories as they are our future heritage. This will also be an opportunity to use volunteers to help collect community content.

In the Digital Inclusion space, Cleavelin is currently focusing on the launch of a number of programmes that range from our primary schools right through to enhancing the internet banking literacy of our elderly community. This will also involve the set up and programme co-ordinating of the Re-Collect Digihub.

Our first He Kura Kainga role's programme 'Its cool to korero' begins on the 29 of March in the Waipawa Library. This will give people a space to come and practise their Reo. TeRangimaire is also working alongside community to plan the Matariki events and festival and is working closely with our local Taiwhenua.



# Safety

## And Wellbeing

### Health and Safety Overview

The raft of identified improvements identified in the Gap Analysis Project continues to be put into action as do reactive and proactive actions.

Since the last report:

- Approximately half the vehicle fleet have been fitted with the GPS system 'Eroad'. A significant amount of time has been invested in ensuring the Eroad system is set up correctly including auditing the setup of each vehicle and data entry of service history. Work continues on setting up the regular operational vehicle check module of Eroad which will provide assurance our fleet is safe and operationally fit.
- The 3Waters vehicle has been identified as being unsuitable for their operational requirements and a replacement has been ordered. Given the inappropriate 3Waters vehicle and that a significant number of the fleet have been identified for replacement, the CFO has decided to review the fleet and its suitability. The HS&W team will support this review.
- CHBDC have taken the first delivery of lone worker devices and the complementary training is complete. The roll-out of the satellite lone worker devices was staggered while metal mounting plates for the bridge units was developed with the workforce. This is expected to be completed in the coming weeks.
- The new reporting system Risk Manager has been established as the single point of truth for HS&W matters for our organisation, while integration work is occurring between RiskManager and the Datacom and Psoda platforms. Line managers are continuing to receive assistance and support to manage events in the system.
- Reporting levels are up on previous figures which has a flow on effect to the number of investigations, improvements and the demand on the HS&W team.
- The campaign #ActWithMana is a district wide initiative to combat abuse and threatening behaviour directed towards stop-go sign operators at roadworks. This campaign will satisfy our upstream and overlapping duties and will hopefully be instrumental in addressing the level of abusive behaviour our people are exposed to.
- Significant work has also gone into the policy and guideline space including; vehicle and driving, fleet management and procurement, vaccinations and isolated and lone working. As part of the lone worker device rollout, an additional internal escalation guideline has been developed to guide people leaders in the event of a genuine lone worker device activation.

### Contractor Management Framework

The next focus is area is the Contractor Management Framework is in draft and is currently under review prior to going out to the teams for feedback/input. Once finalised the plan will be rolled out across the business. The purpose of the framework is to standardise our health and safety requirements across all contractors engaged by Council. This includes how we carry out due diligence on our contractors through things like regular site inspections, audits and how we deem them competent over and above the baseline pre-qualification. The framework is critical to CHBDC meeting its overlapping duties and managing the critical risk of contractors.

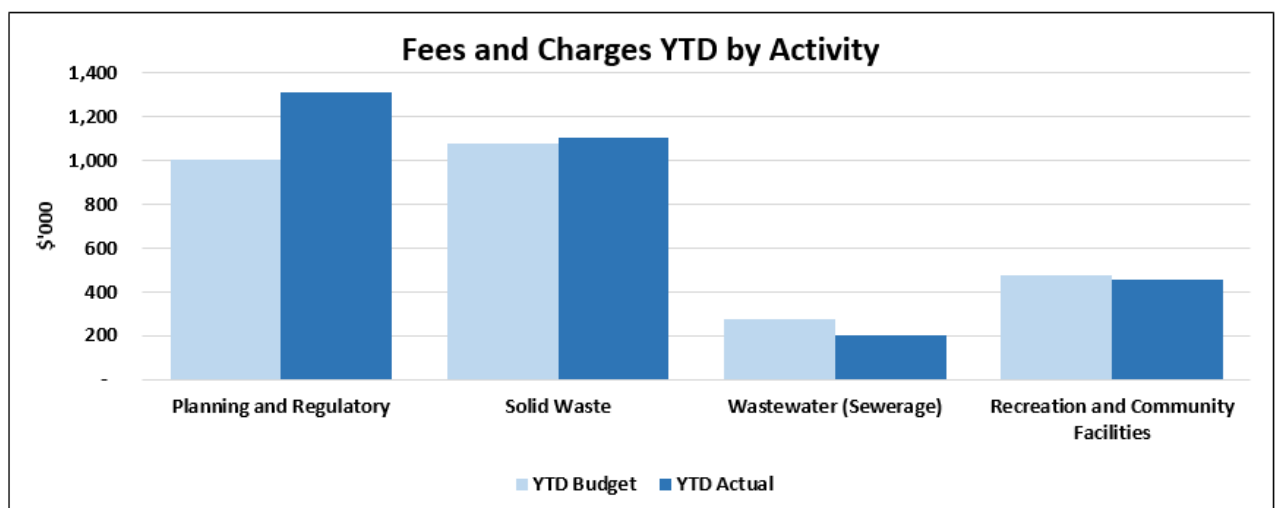
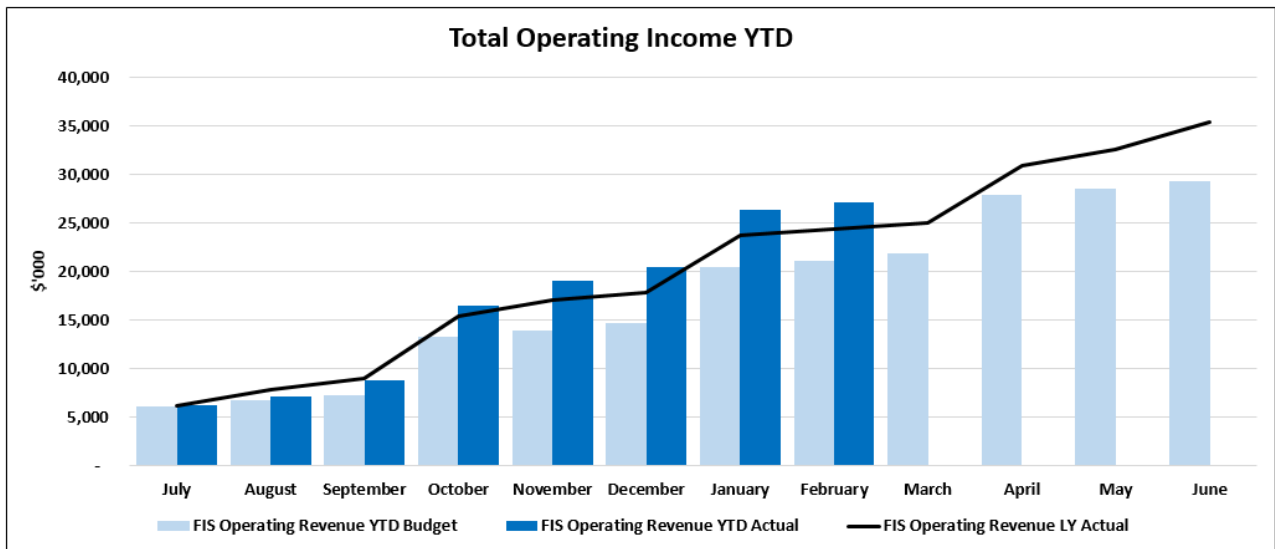
# Financial

## Performance

### FINANCIAL PERFORMANCE ENDING 28 FEBRUARY 2021

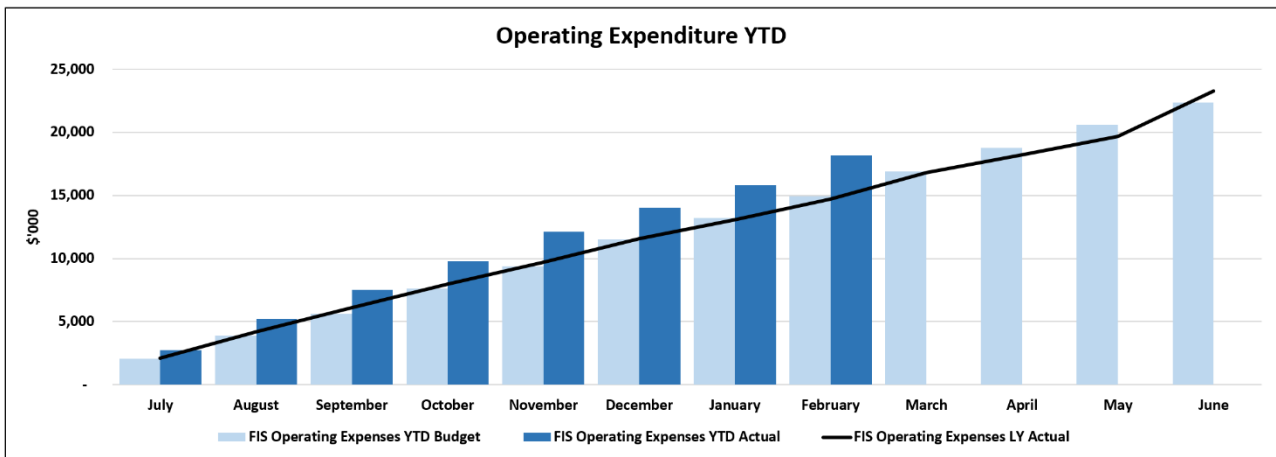
The graphs and tables below show the financial results for Council covering the financial results for the 8 months ended 28 February 2021.

Revenue is tracking above budget, but the unbudgeted 3 Waters Reform monies (\$1.175m operating grant and \$4.25m capital grant) and the Job Creation and Whanau Ora schemes (\$3.7m) (which also comes with unbudgeted costs) distort this. The underlying data shows that planning and regulatory is still processing more consents than expected (and this is against a fees budget that was set pre-COVID-19). Landfill is also going strong, but their budgets for 2020/21 had quite a lift from the previous year.

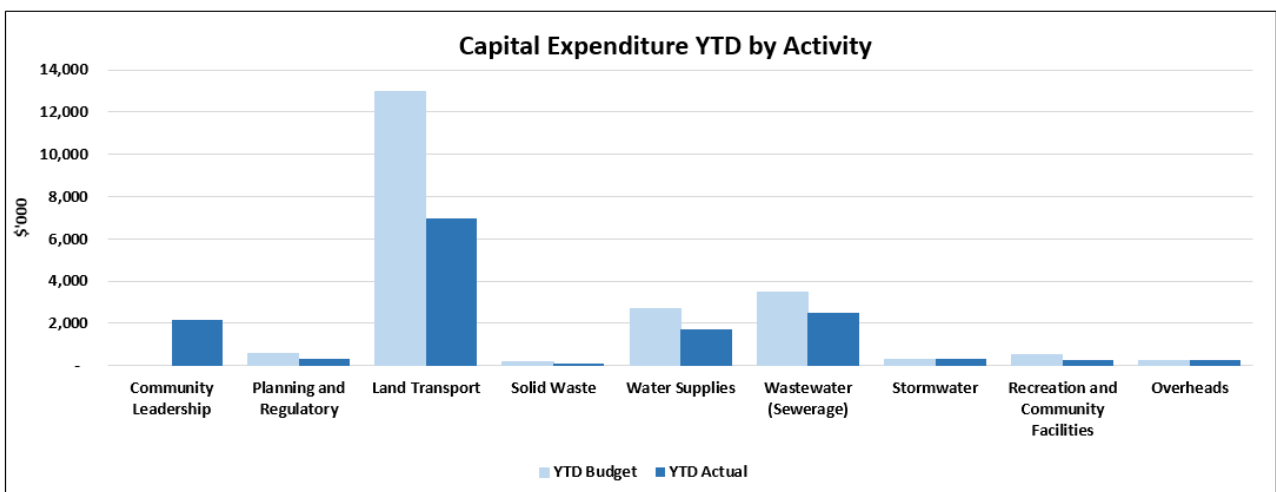
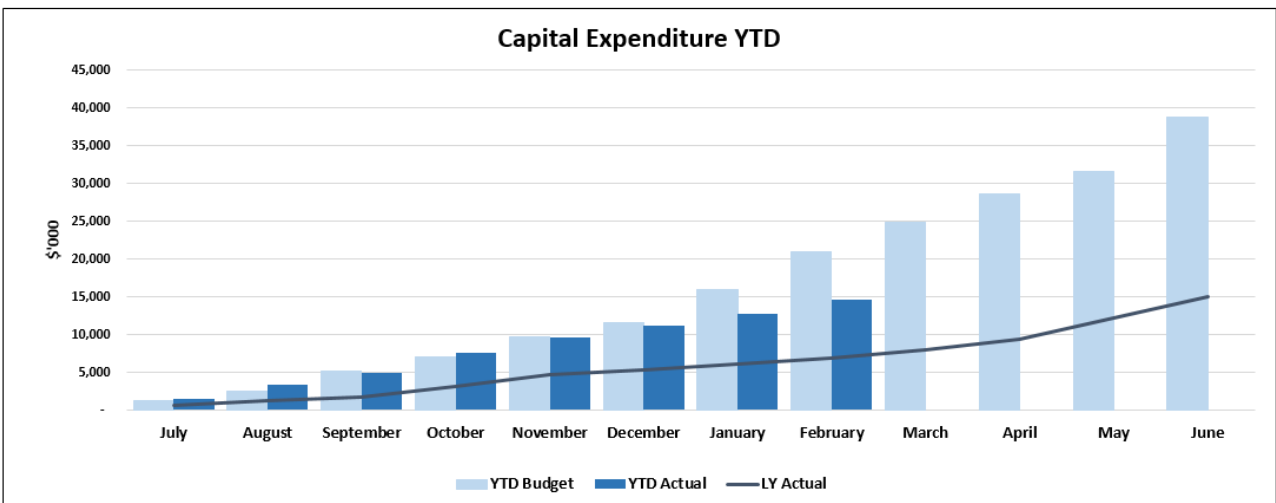


The operating expenses budget shows a similar trend to the operating revenue budget which is being distorted by the Job Creation and Whanau Ora schemes (\$2.2m). Council is showing a savings in wages driven by vacancies. Payments to suppliers are \$3.7m over budget. \$2.2m of this is due the job creation and Whanau Ora scheme, \$320k is outsourcing of

consents, \$249k is in solid waste (disposing of concrete, tyres, green waste, purchase of carbon credits, and the costs of the S17a review), \$554k in Three Waters (mostly operational, but includes \$43k of connection recharges yet to occur).



The capital programs for the year are well underway. Nga Ara Tipuna project is showing up in the graph below under community leadership, and the District Plan budget showing under Planning & Regulatory. Land Transport includes both the budget and spend for the normal activities plus the Route 52 PGF funded project



# # the BIG. Waste Water Story

# # the BIG. Water Story

Within #TheBigWaterStory programme of work, the Waipukurau Second Supply is making good progress with the successful drilling of an investigatory bore. Landowner negotiations are underway along with pipeline and reservoir concept designs. The Kairakau Water Supply Upgrade also makes progress with the approval of the approach and design now progressing alongside landowner negotiations.

Johnson street Water treatment plant upgrade is now complete and commissioned allowing an improvement in supply and pressure into the bottom end of Waipawa. Firefighting planning continues with works to be tendered shortly.

#TheBigWastewaterStory programme has advanced over the last few months, with Stage Two of the Otane to Waipawa Wastewater Pipeline underway in March, linking the end of stage 1 works at Racecourse Road/White Road to the Waipawa Treatment Plant.

Over the next few months Council will commence de-sludging of the WWTP ponds, finalise concepts and prepare resource consent applications for land dispersal, commence infiltration and inflow (I&I) studies to understand and reduce flows and start the upgrade of the tertiary treatment in Waipawa to improve treatment in the short term.

## TRANCHE ONE – 3 WATERS REFORM PROGRAMME

Council identified a number of projects as part of the 3 Waters reform programme tranche one – below is a brief update on the programme – a more detailed update will be supplied in the next Finance and Infrastructure Committee meeting in late April 2021.



Proudly Supported by

**New Zealand Government**

**Te Kāwanatanga o Aotearoa**

1. **Regional 3 Waters** – work is underway with other councils to assess water supplies, review asset management systems and GIS systems for synergies.
2. **Water Safety Planning** – source protection mapping and catchment risk assessment work is underway to support our water safety plans.
3. **Otane to Waipawa Pipeline Stage 2** – the site laydown area is established and welding of pipe strings are underway
4. **Waipukurau Second Water Supply** – a test bore has been drilled
5. **Wastewater Treatment Improvements** – enabling works before a DAF filtration system is installed is underway
6. **Wastewater Desludging** – procurement is underway and
7. **Bylaw Reviews** – drafts out for consultation alongside the long term plan to inform and support the wider wastewater programme
8. **Software implementation** – a new project management software is now live and supporting the programme, and a 3 waters monitoring and wider infrastructure consent management tool is being planned for implementation by June 2021.
9. **Water Renewals** – a project to renew water mains is underway in Waipukurau across Nelson and Reservoir roads
10. **Wastewater Renewals** – this fund is focussed on expediting our I&I programme, starting with physical works in Otane and studies in other towns.





Caravan Dump station – River Terrace



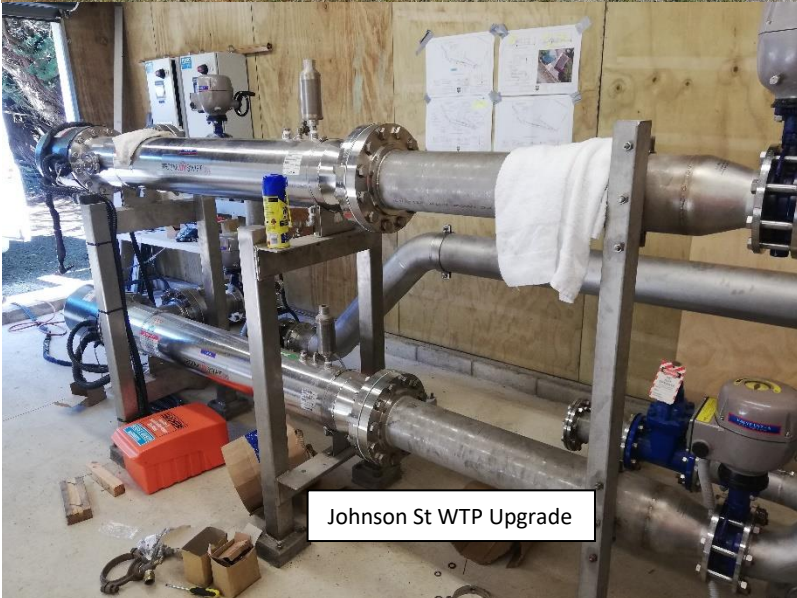
Water Main Renewal – Nelson/ Reservoir



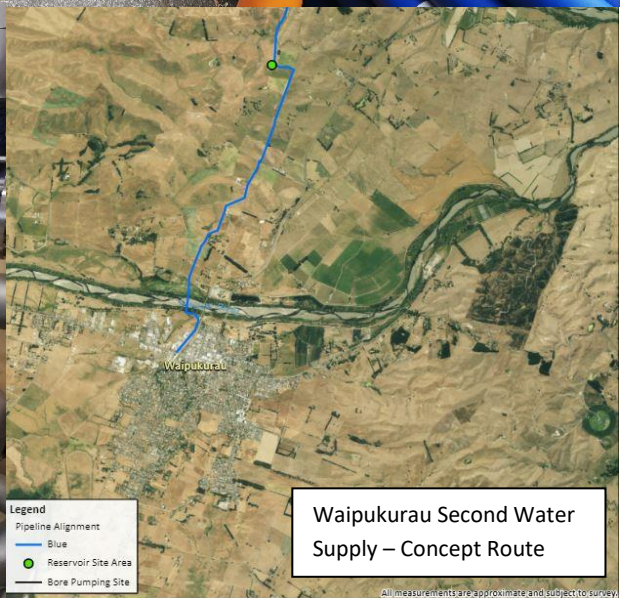
Otane to Waipawa Wastewater Pipeline delivery



Water Main Renewal – Nelson/ reservoir



Johnson St WTP Upgrade



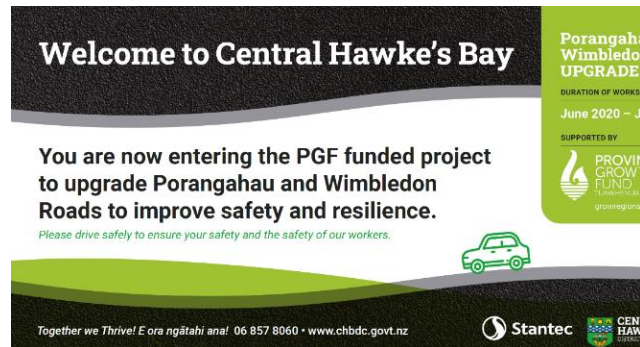
Legend  
Pipeline Alignment  
Blue  
Reservoir Site Area  
Bore Pumping Site

Waipukurau Second Water Supply – Concept Route

All measurements are approximate and subject to survey

## PGF ROADING PROGRAMME – PORANGAHAU TO WIMBLEDON

PHASE	DESIGN/ BUILD	
TIMELINE	JAN 2020 START DATE	JUNE 2022 END DATE
PROGRESS	20%	
BUDGET	\$20.1m	
RISKS		



### Scope

To upgrade Porangahau and Wimbledon Roads to improve safety and resilience along the route from Waipukurau to the Tararua border on Wimbledon Road.

### The Contractor

Stantec and Council have been delivering the design, procurement and contractor supervision of this significant programme of work.

We now have three contractors onboard to deliver the main components of this programme, Concrete Structures, Fulton Hogan and Russell Roads.

Funded through the PGF by MBIE – the programme is well underway, and we can expect to see significant construction through to 2022.

### Communications

An interactive map has been created and can be visited here:  
[https://experience.arcgis.com/experience/947a211cafb4a96a063fcd1e8d3a461/page/page\\_10/](https://experience.arcgis.com/experience/947a211cafb4a96a063fcd1e8d3a461/page/page_10/)

Webpages for the programme and individual projects can be found here: <https://www.chbdc.govt.nz/our-district/projects/porangahau-wimbledon-road-upgrade/>

An e-newsletter is set up and is being sent out monthly. Sign up is available via the Council website, along with the ability to view past editions.

### Employment Statistics:

### Progress Update

#### Retaining Walls:

To kick off the start of the programme of upgrades along Porangahau and Wimbledon Roads four retaining walls were identified as Quick Wins – 3 / 4 sites are now 99% complete.

**Contract 1075: 2 Retaining Walls, Porangahau Rd - Downer RP27488:** Completed

**RW177:** Completed structural work, awaiting guard rail.

**Contract 1076: 2 Retaining Walls - Russell Roads**

**RW283 (Wimbledon Road):** 90% complete, awaiting guard rail and road reinstatement

**RW184 (Porangahau Road):** Completed

**C-1077: AWPT on Porangahau Road - Russell Roads**

Complete. 600m of road across two locations has been upgraded.

**C-1096: Bridge and Culvert Strengthening**

Concrete Structures are on board, Wallingford Bridge is under construction and Kokomoko is due to start in mid April 2021, with 5 other structures on the work programme.

**C-1098 Retaining Walls**

Fulton Hogan has awarded the first two retaining walls of this programme – the first of these are underway.

**C-1097 Flaxmill**

Blessing held 29<sup>th</sup> March to kick start this – Russell Roads engaged to commence with Stage 1 of 5.



# PGF ROADING PROGRAMME – PORANGAHAU TO WIMBLEDON



**Blessing & Project Commencement**  
Flaxmill & Wanstead Road Upgrade

**Please join us:**  
Date: Mon 29th  
March 2021  
Time: 9:00am

Central Hawke's Bay District Council, with funding from the Provincial Growth Fund are improving transport infrastructure for the communities along Porangahau and Wimbleton roads. A key focus of the programme of work is the bridge at Flaxmill.

Flaxmill Bridge has a history of flooding. Rainfall events in February 2004 and March 2019 cut electricity and compromised community safety. In 2018 the road either side of Flaxmill Bridge was closed in excess of 20 days due to flooding.

With growing volumes of freight using the route, reliability and resilience needs to be assured if the regional economy is to be protected and opportunities for productivity are enhanced.

The conclusion of this project will provide future generations with safe and durable road infrastructure along what is a key thoroughfare in our district. You will be kept informed in advance of any construction works due to take place, which may result in a delay to your journey. Council apologises for any short-term disruption that the project may cause.



Together we thrive! E ora ngāhahi ana! • [www.chbdc.govt.nz](http://www.chbdc.govt.nz)



C1076 Wimbleton Retaining Wall 283



C1096 Wallingford Bridge Upgrade



C1098 Wimbleton Retaining Wall 277



C1096 Wallingford Bridge – MBIE Visit



## DISTRICT PLAN REVIEW

PHASE Consultation



TIMELINE

AUG 2017  
START  
DATE

Notification May 2021



PROGRESS

70%



BUDGET

\$1,800,749



RISKS



### Scope

The District Plan Review is now progressing through the statutory requirements of Schedule 1 of the Resource Management Act ahead of notification in May 2021.

### Progress Update

Officers are focused on ensuring all pre-notification tasks and activities required before the Plan is notified are completed in a timely manner. Generally, these tasks relate to requirements to undertake pre-notification consultation with:

- The Minister of the Environment
- Other Ministers of the Crown who may be affected
- Local authorities who may be affected
- Tangata whenua of the area
- Customary Marine Title Groups

In addition, progress is continuing on drafting the public notice of the review and appropriate communication with ratepayer and stakeholder groups around the notification details. A comprehensive Communications and Engagement Strategy is being prepared to support this work.

Work is also progressing on addressing the requirements of two Requiring Authorities (Ministry of Education and First Gas New Zealand) who have chosen to use the notification process to consult on two designations within the district.

Officers continue to work on the expressions of interest notice for the appointment of accredited commissioners to the District Plan Hearings Panel. It is hoped to progress this matter by 31 March 2021.

A legal review of Section 32 Reports is anticipated to be completed by the end of March 2021.













Engagement with tangata whenua to meet pre-notification consultation requirements is on-going and officers continue to work with Councils Pou Whatuia officer on this project. The continuing support of Dr Maaka with this consultation is acknowledged.

Provision for the upload of the Proposed District Plan onto an e-plan platform is continuing and consideration of online submission software is underway.

Preparation of the district planning maps has now been completed and the maps and schedules are being reviewed for accuracy and compliance with the national planning standards.



## POUND PROJECT

PHASE	DESIGN	    
TIMELINE	JUN 2018 START DATE	JULY 2020 END DATE
PROGRESS	5%	
BUDGET	\$422k TOTAL PROJECT	  
RISKS		  



### Scope

To build a purpose built Pound Facility for Central Hawke's Bay that meets:

- Ministry for Primary Industry (MPI) standards and;
- the needs of the community.

### Progress Update

We are currently working with an external stakeholder around a potential land swap opportunity for the provision of a Pound Facility.

Work is underway with an initial design/build concept for the proposed land swap option, that will meet the MPI standards alongside ensuring we build to meet our needs of the Community now and into the future.

The Customer Experience and Relationships Manager is continuing to manage the relationship with the SPCA.

---