

OTANE ALTERNATIVE WATER SUPPLY

New Water Supply Pipeline from Waipawa to Otane

From approx. Monday 8th July 2019 we will be installing a new water pipeline to supply the Township of Otane. This work is expected to take approx. 6 months to complete.

SCOPE

The construction will see a 180mm PE pipeline laid from SH2, connecting into the existing Waipawa supply, running along Racecourse Road, crossing the railway on Racecourse Road and running into and along White Road, finally connecting into new supply on the corner of Knorp and White Road, which feeds into the existing Otane water network supply on the corner of Higginson Street and White Road.

The pipeline will run for approx. 5.2km in distance – flow will be controlled via a pressure valve in Otane to supply water as the demand requires.

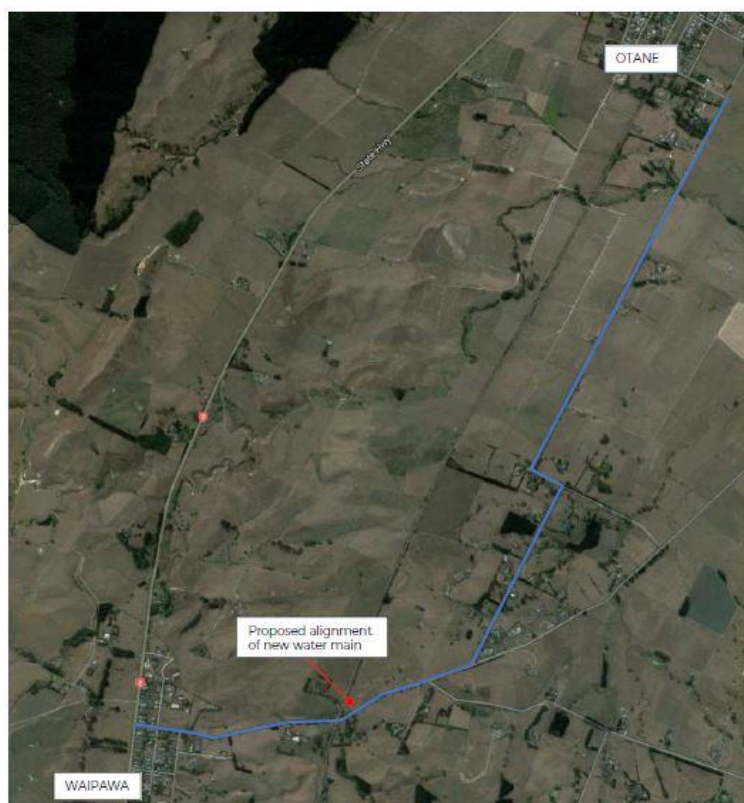


Figure 1.1: Overview of proposed Water Supply Main

THE CONTRACTOR

Fulton Hogan will be completing the work on behalf of Central Hawkes Bay District Council. You can expect a letter drop shortly from Fulton Hogan outlining the works and further details.



FREQUENTLY ASKED QUESTIONS (FAQs)

What is the reason for this work?

Outlined within **#thebigwaterstory** as a key project to upgrade the security of supply and resilience to the Otane water network.

When will the project start and how long will it take?

We expect the project to start approx. Monday 8th July 2019 and be completed in Dec 2019, taking approx. 6 months to complete.

Will the area be left safe and tidy over the weekends and outside of work hours?

Yes, contractors will ensure all areas are left safe and tidy, with barriers around excavations and residents informed of the risks.

An after care plan will be in place and a contact given to residents in the event of any remedial works being required.

Will there be any traffic interruptions or diversions?

There will be significant traffic management in place to ensure the safety of the teams undertaking the work, to minimise interruptions, Council will work with contractors to ensure residents are aware of the project and to keep these traffic interruptions to a minimum.

Will residents have any restrictions to access their homes?

There may be short periods of time when access to driveways is limited. Individual property owners/tenants will be advised in advance.

Will there be a lot of noise?

There will be some noise because of vehicle movements, trenching work and operation of equipment. The impact of noise on the community will vary according to the time of day, nature of work and proximity to the noise source.

What are the hours of work on site?

The Contractors are permitted to work on site from 7.00am to 6.00pm Monday to Saturday. No work other than emergency or maintenance work shall be undertaken on Sundays and Public Holidays without prior approval by the Engineer.

How will the pipeline be installed?

The construction method proposed is mainly directional drill, but there will be excavations for entry/ exit holes, connection points and to expose existing services

Who are the Key Council contacts?

Shane Kingston is the Engineers Rep (Project Manager) and Darren de Klerk is the Engineer to Contract.

Who can I contact for more information?

If you have any queries, please contact CHBDC council on **06 857 8060** or for information on other projects please visit: <https://www.chbdc.govt.nz/our-district/projects/otane-alternate-drinking-water-supply/>

**Together
we thrive!**