

# #the BIG Stormwater Story

## Programme Update

In 2021, Council identified the need to instigate a planned, long-term approach to addressing the significant investment required in our stormwater networks.

Cyclone Gabrielle accelerated that need, prompting Council to urgently boost its investment in stormwater rather than take a longer-term approach. Addressing urban stormwater was a key outcome of the district's recovery plan. Council quickly identified where investigation and corrective maintenance to address performance issues and blockages on the stormwater network were required to plan for and achieve long-term change.

Council is proposing to allocate additional funding towards stormwater maintenance within this year's Three Year Plan, which will allow us to continue addressing performance issues on the network and carry out routine maintenance on channels that have been cleared.

This year we plan to complete work on networks in Shanly Street, Takapau Road, Campbell Street, Tutanekai Street, Bush Drain and Great North Road.

Keep an eye out for our Three Year Plan Consultation that commences in early April.

## Highlights

since June 2021 to improve network performance



2 km

PIPE (5% OF NETWORK) FLUSHED TO ASSESS CONDITION & REMOVE BLOCKAGES



5 km

VEGETATION CLEARED (31% OF NETWORK)



4 km

BED EXCAVATION (25% OF NETWORK)



705,000 litres

RAINWATER CAPTURED TO PREVENT FLOODING



\$2.6 million

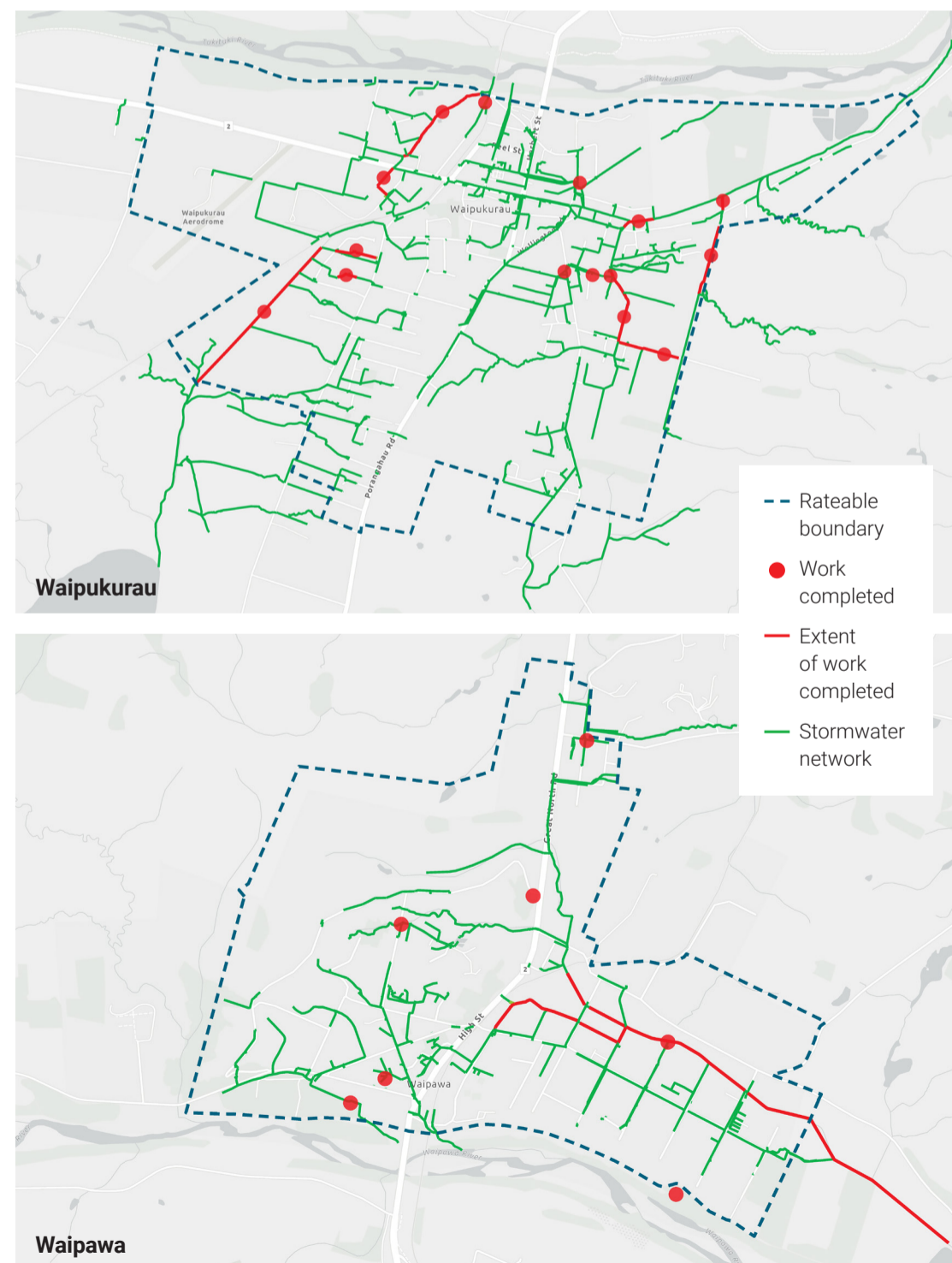
SPENT ON DRAIN MAINTENANCE, UPGRADES, MODELLING & STRATEGY



236

COMMUNITY MEMBERS ENGAGED VIA SERVICE REQUESTS & FOCUS GROUPS

## Post-cyclone stormwater maintenance



## Programme Highlights

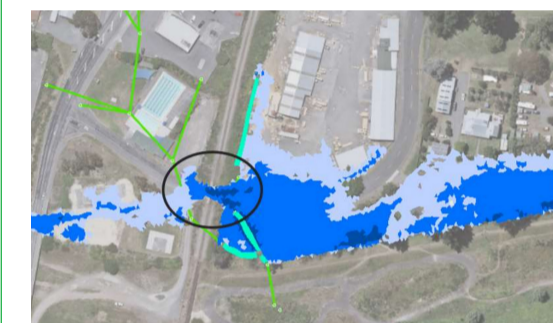
### Corrective maintenance work

Kickstarted by Gabrielle, our cyclone recovery corrective maintenance programme has focused on remediating drains where maintenance was deferred or not performed. The targeted \$1.2 million programme of intensive works has restored drains to their design state and capacity, including major drainage channels at Bush Drain in Waipawa and the Eastern Interceptor, Kiripara Stream and Pah Flat Drain in Waipukurau. Since completing these major works in February 2024, Council has turned its focus to outlining ongoing maintenance plans and funding for increased inspection and maintenance of the entire network.



### Nelson Street network upgrade

Completed in April 2022 by Higgins, this \$793,294 project delivered improved stormwater performance to central Waipukurau. The major upgrade to the Nelson Street network involved extensive design, excavation, reinstatement and installation work, including 15 sumps, 7 manholes and 377 metres of pipe.



### Stormwater strategy

We are working on a strategic direction for the stormwater activity that will define our vision for long-term management of stormwater and shape our long-term programme. Over the past year, our efforts have been focused on cyclone recovery but we are now transitioning to those works with long-term impact. The strategy will cover all aspects of stormwater and involve an extensive period of engagement to truly reflect community expectations. Catchment planning and formulating workstreams are key aspects of this project.



### Stormwater modelling

Beginning in 2021, a project to build and utilise a digital twin hydrologic model for our urban stormwater systems has been underway. We have now created a robust tool for flood prediction, planning, growth and analysis. The model simulates the effects of rainfall on our network and can scale up and down, allowing us to understand where flooding occurs and the causes of that flooding.

We welcome your questions and feedback: email us at [customerservice@chbdc.govt.nz](mailto:customerservice@chbdc.govt.nz)



Want to learn more? Scan the QR code to find out more about what we've been doing to improve the management of stormwater in our district.

## Challenges

The impacts of historic underinvestment in our stormwater networks mean our existing assets struggle to cope with increasingly large and frequent rainfall events and other climate change effects.

Stormwater generally receives less funding than the other water activities and can have higher construction costs. The current network performance does not meet communities' expectations, therefore major investment in

upgrades to address demand and performance are required. Following feedback received post-Cyclone Gabrielle, we are considering funding options to increase the amount of maintenance we undertake.

Do your bit! Some important drains are privately owned. Please remove any obstructions or blockages in your own private drains. If you need advice or more information, please contact us at Council.