



## Dates for your calendar



### EASIE Living Van Monday 19 February, 10am – 2pm

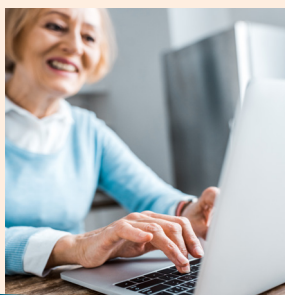
If you or someone you know is looking for simple, practical solutions to maintain independence in life, visit the team at the EASIE Living Mobile Van at the Waipawa Library. This innovative service provides easy access to disability information, advice, local support services, and living and mobility aids.



### Play after a crisis Tuesday 20 February, 10.30am

This event is being held at the Centralines Sports Complex by Sport Hawke's Bay in collaboration with Adam Gardner from Sport Canterbury. The morning tea serves as an opportunity for the community to come together and discuss how we can best preserve tamariki's right to play during a crisis and beyond.

Please RSVP to Pia piab@sporthb.net.nz



### Digital skills for Seniors

Build confidence and discover what you can do on the internet through any of our **FREE** digital skills courses. The classes run weekly on Fridays until 1 March from 10am to 12 noon at the Waipawa Library.

**Courses are offered in a safe, friendly environment and anyone aged 65+ is welcome to join!**

## Bridge into Te Paerahi Beach (Pōrangahau)



### Non-compliance to current restrictions could lead to further limitations and enforcement actions.

Bridge restrictions remain in place for Makaramu Bridge - the bridge connecting to Te Paerahi Beach (Pōrangahau). Engineers have found structural deterioration on the bridge beam at one of the bridge joints, which makes it unsafe for vehicles over 3.5 tonnes to use.

We are aware that some people are ignoring the restrictions and there are serious concerns that this will compromise the structural integrity of the bridge further and ultimately the safety of the community before we have a permanent solution in place.

Road users are urged to comply with the current restrictions:

|                                       |  |
|---------------------------------------|--|
| ✓ One vehicle at a time               | ✗ No heavy vehicles                              |
| ✓ Light vehicles only (under 3,500kg) | ✗ No motorhomes, caravans, horse floats or boats |
| ✓ 30km speed limit                    | ✗ No moving of concrete barriers                 |

We expect to have an update next week.

**Further updates will be available on Council's website and Facebook page. If you have any questions or concerns please contact Council 24/7 on 06 857 8060.**



## Second-Hand Sunday

### It's on this Sunday!

Taking place Sunday 18 February from 9am to 1pm, here is your opportunity to give away items you no longer have use for, or collect items from others around Central Hawke's Bay, **for free!** This is all while helping the environment by reducing what is going to landfill.

A list of registered addresses is in this week's paper. Registrations will remain open until 5pm on Thursday 15 February. The final list of all Second-Hand Sunday addresses will be available on the Council website and on flyers at the Council office and Service Centres from 12pm on Friday 16 February.

**To find out more and to register, visit [www.chbdc.govt.nz](http://www.chbdc.govt.nz) and search 'Second-Hand Sunday' or pick up a registration form from the Waipawa Council office, Waipawa Library or the Knowledge and Learning Hub - Te Huinga Wai in Waipukurau.**