

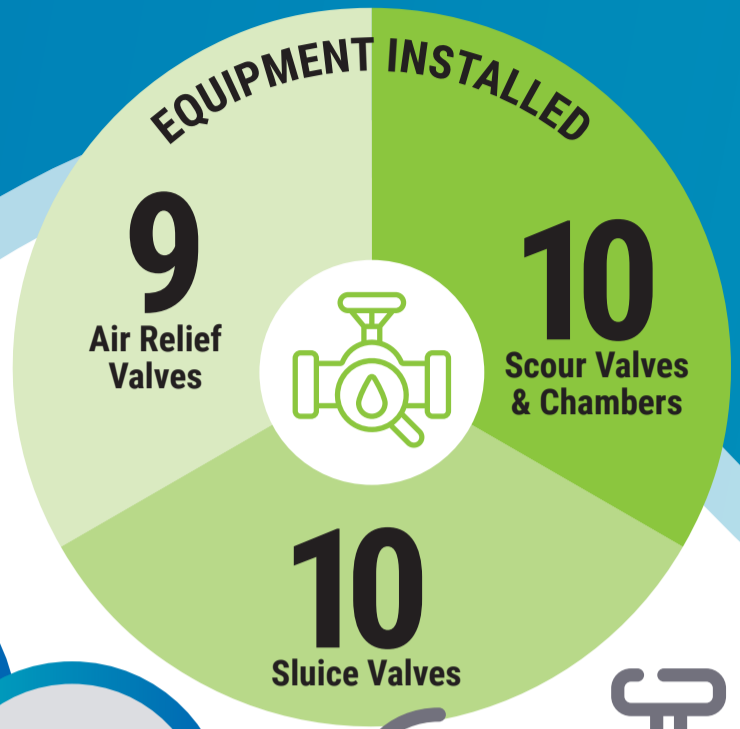
Otane Water Supply Completion

#theBIGWaterStory

In December 2019, Central Hawkes Bay District Council delivered an alternate drinking water supply to the township of Otane, which had experienced issues due to demand being greater than the ability to supply during peak periods.

This project will future proof Otane for growth, and add much needed resilience in the event of a failure to the main line.

Water will continue to be supplied from the Waipawa Reservoir via the borefield and treatment plant on Tikokino Road. The project involved directional drilling a new pipeline along the route.

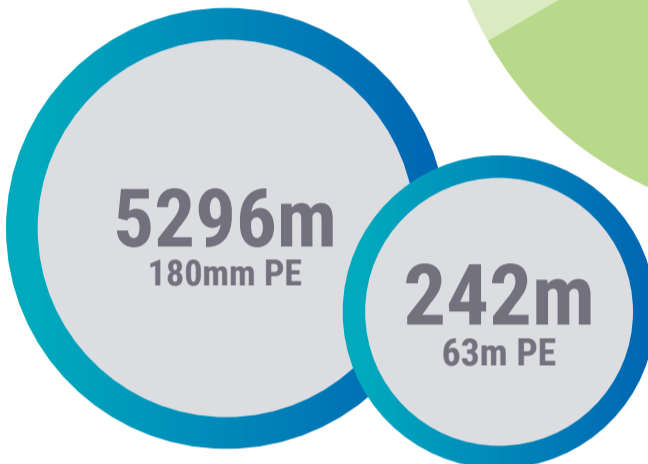


MANHOURS WORKED

18,428 HOURS

10,699 FULTON HOGAN
6,521 SUBCONTRACTORS
1,208 COUNCIL

PIPELINE STATS



KILOPASCALS
PRESSURE
AT PRV



680

MACHINERY ON SITE



2 DRILL RIGS



8 TRUCKS

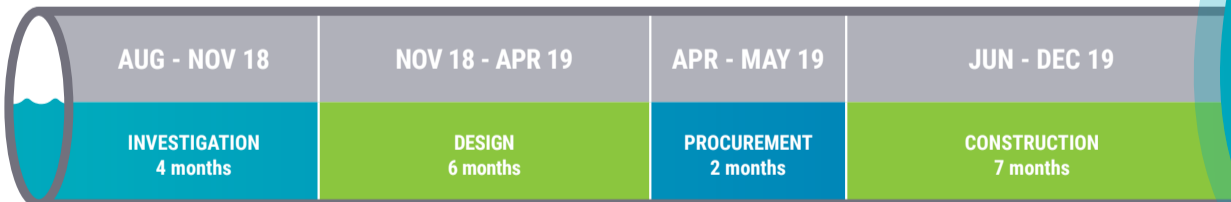


3 WATER CARTS



6 EXCAVATORS
2.2 TONNE TO 20 TONNE

TIMELINE OF PROJECT ACTIVITIES



RESILIENCE



Up to **45,000 LITRES** of additional water able to be conveyed to Otane per hour



DOUBLE the hydrant flow for fire capability to 25l/s



A SECOND WATER SUPPLY into Otane to add pressure and capacity in the event of failure to the main supply

6 FACEBOOK POSTS

780 LETTERS DELIVERED

26 PAGES OF DRAWING PLANS

6 TRAFFIC MANAGEMENT AUDITS

87 SAFETY OBSERVATIONS
24 SAFETY IMPROVEMENTS

2 DESIGN REPORTS COMMISSIONED

13 SITE AUDITS

3 SHUTDOWNS FOR CONNECTIONS

1 KIWI RAIL CROSSING