

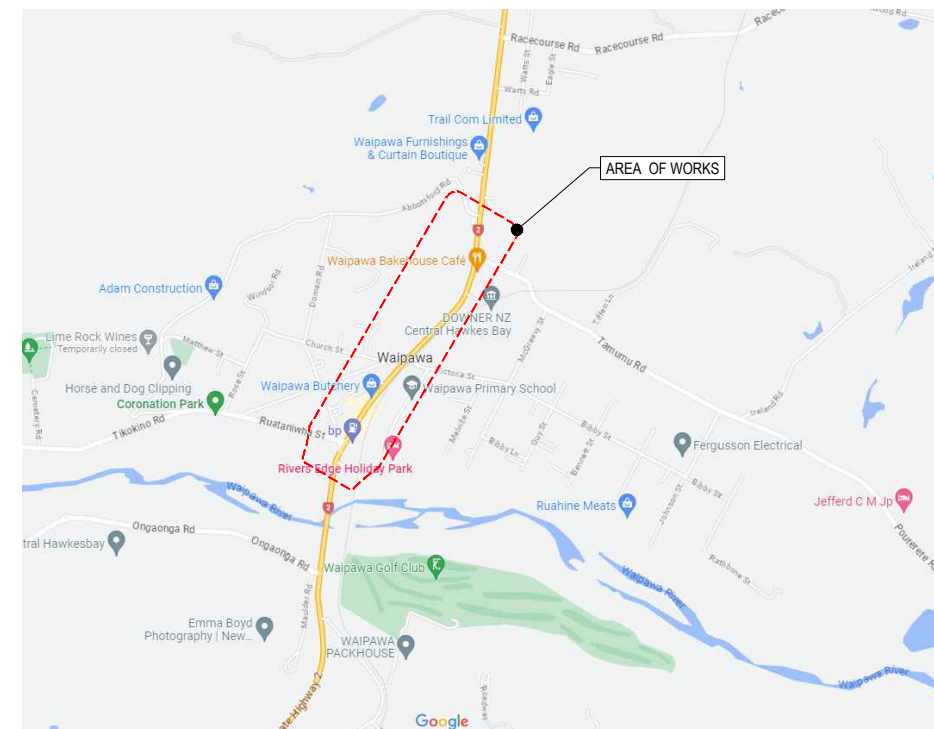


**CENTRAL
HAWKE'S BAY**
DISTRICT COUNCIL

CENTRAL HAWKES BAY DISTRICT COUNCIL WAIPAWA "STREETS FOR PEOPLE"

DRAWINGS INDEX

DWG No.	DRAWING TITLE
C000	DRAWING INDEX
C001	GENERAL NOTES PLAN
C010	OVERVIEW PLAN
C011	LEGEND PLAN
C020	GENERAL LAYOUT PLAN - SHEET 1 OF 7
C021	GENERAL LAYOUT PLAN - SHEET 2 OF 7
C022	GENERAL LAYOUT PLAN - SHEET 3 OF 7
C023	GENERAL LAYOUT PLAN - SHEET 4 OF 7
C024	GENERAL LAYOUT PLAN - SHEET 5 OF 7
C025	GENERAL LAYOUT PLAN - SHEET 6 OF 7
C026	GENERAL LAYOUT PLAN - SHEET 7 OF 7
C161	NEW LIGHTING LAYOUT PLAN - SHEET 1 OF 2
C162	NEW LIGHTING LAYOUT PLAN - SHEET 2 OF 2
C170	TYPICAL DETAILS



SUBJECT TO INTERNAL REVIEW
FOR CONSTRUCTION
27.03.24

DO NOT SCALE - IF IN DOUBT, ASK

200mm

150

100

90

80

70

60

50

40

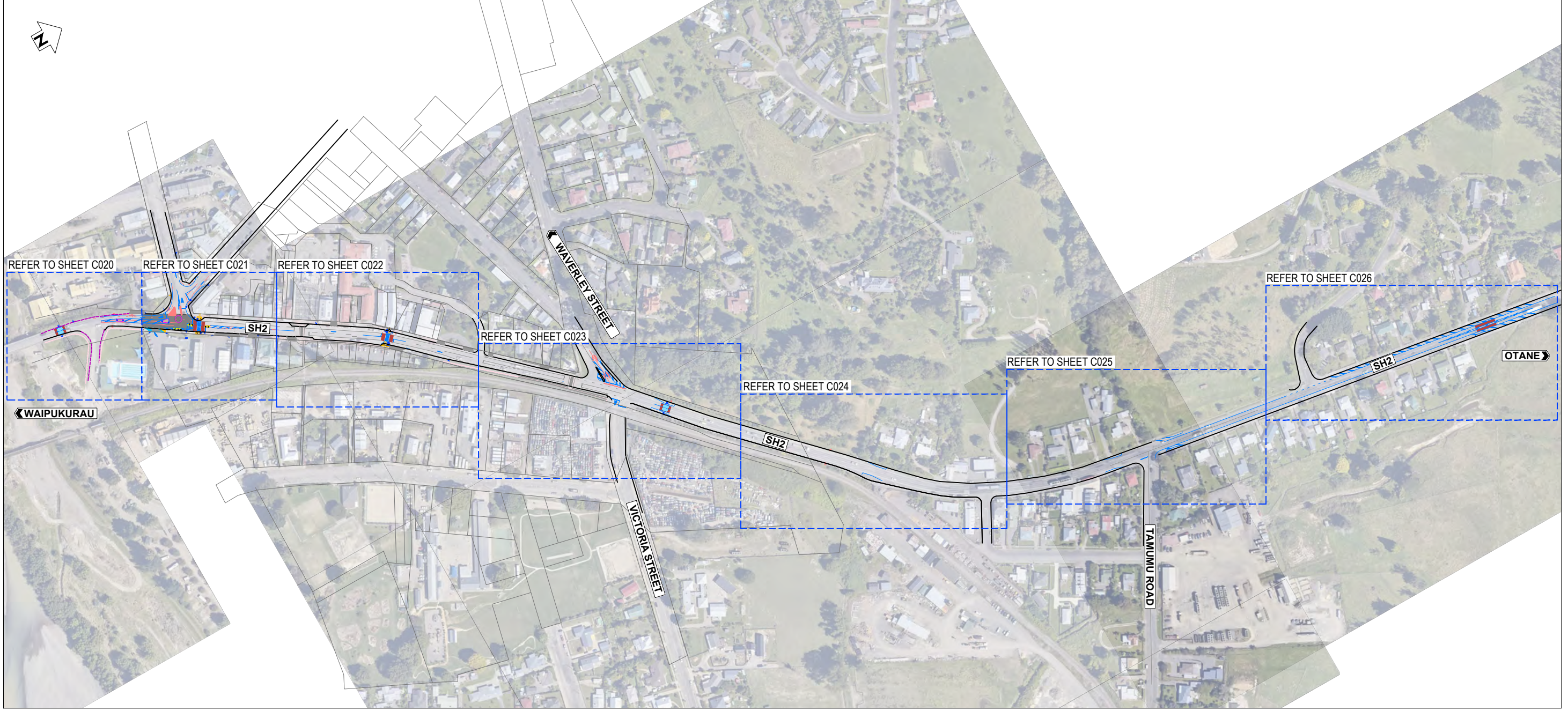
30

20

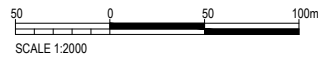
10

0

ORIGINAL SIZE A1



PLAN
SCALE 1 : 2000



SUBJECT TO INTERNAL REVIEW

FOR CONSTRUCTION

REV	DESCRIPTION	MF	CM	JD	DATE
1	FOR CONSTRUCTION	DRN	CHK	APP	DATE

SURVEYED		
DESIGNED		
DRAWN	Mahib Faisal	03.24
CAD REVIEW	Charles Maaka	03.24
DESIGN CHECK	Mahib Faisal	03.24
DESIGN REVIEW	Mike Skelton	03.24
APPROVED	Joanian Davenport	03.24
PROF REGISTRATION:		



CENTRAL HAWKES BAY DISTRICT COUNCIL
WAIPAWA "STREETS FOR PEOPLE"

OVERVIEW PLAN

Status Stamp	FOR CONSTRUCTION
Date Stamp	27.03.24
Scales	NOT TO SCALE
Drawing No.	310205560-01-100-C010
Rev.	1

DO NOT SCALE - IF IN DOUBT, ASK

ORIGINAL SIZE A1

LEGEND

	EXISTING KERB
	NEW KERB
	NEW ROAD MARKING
	EXISTING ROAD MARKING
	REMOVE ROAD MARKING
	NEW ROUNDABOUT
	NEW TRAFFIC ISLAND
	NEW CONCRETE FOOTPATH AS PER CHBDC COUNCIL STANDARD
	EXISTING VEHICLE CROSSING
	NEW VEHICLE CROSSING
	NEW SPEED HUMP
	CITYFLEX POST (WHITE) 80mmØ, 800mm HIGH
	SPUNLITE PEDESTRIAN CROSSING POLE
	WARNING TACTILES
	DIRECTIONAL TACTILES
	EXTENT OF PAVEMENT RESURFACING (TO BE UNDERTAKEN BY WAKA KOTAHI)

PROPOSED SIGNAGE LEGEND

	PROPOSED SIGN
	PW-30 "PEDESTRIAN CROSSING" SIGN
	PW-8 ROUNDABOUT AHEAD SIGN
	NEW RG-1 "50km/h" SPEED LIMIT SIGN
	RG-6 "GIVE-WAY" SIGN
	RG-6R "ROUNDABOUT GIVE-WAY" SIGN
	RG-17 KEEP LEFT SIGN

PROPOSED ROADMARKINGS LEGEND

	WC100R	WHITE CONTINUOUS 100mm WIDE REFLECTORISED LINE
	WC300R	WHITE CONTINUOUS 300mm WIDE REFLECTORISED LIMIT LINE
	WC600R	WHITE CONTINUOUS 600mm WIDE REFLECTORISED PEDESTRIAN CROSSING BAR
	M6-2	WHITE REFLECTORISED GIVE WAY SYMBOL, URBAN DIMENSIONS (1.8m X 4.0m HIGH)
	AWD100R	WHITE REFLECTORISED ADVANCED WARNING DIAMOND SYMBOL, URBAN DIMENSIONS (1m X 6m)
	WD600R	WHITE DIAGONAL 600mm WIDE REFLECTORISED BAR
	WI100R(1-2)	WHITE INTERMITTENT 100mm WIDE REFLECTORISED LINE, 1m STRIPE, 2m GAP

NOTE: ALL ROADMARKING TO COMPLY WITH THE NZTA "MANUAL OF TRAFFIC SIGNS AND MARKINGS - PART 2".

KEY DESIGN NOTES

- DESIGN IS BASED ON AERIALS. TOPOGRAPHICAL SURVEY HAS NOT BEEN UNDERTAKEN.
- SET-OUT MEASUREMENTS ARE BASED ON AERIALS. CONTRACTOR TO CONFIRM THE FEASIBILITY OF SET-OUT MEASUREMENTS PRIOR TO CONSTRUCTION.
- NO CHANGES TO THE EXISTING SURFACE LEVELS UNLESS OTHERWISE SPECIFIED.
- WORKS TO AVOID ANY SERVICE COVERS.
- LANDSCAPING DETAILS AND PLAN (BOLLARDS, PLANTER BOXES AND TEMPORARY RAMPS) TO BE CONFIRMED AND SUPPLIED BY CENTRAL HAWKE'S BAY DISTRICT COUNCIL.
- REFER TO "KEY DIMENSIONS PLAN" FOR CRITICAL DIMENSIONS AND SET-OUT MEASUREMENTS.

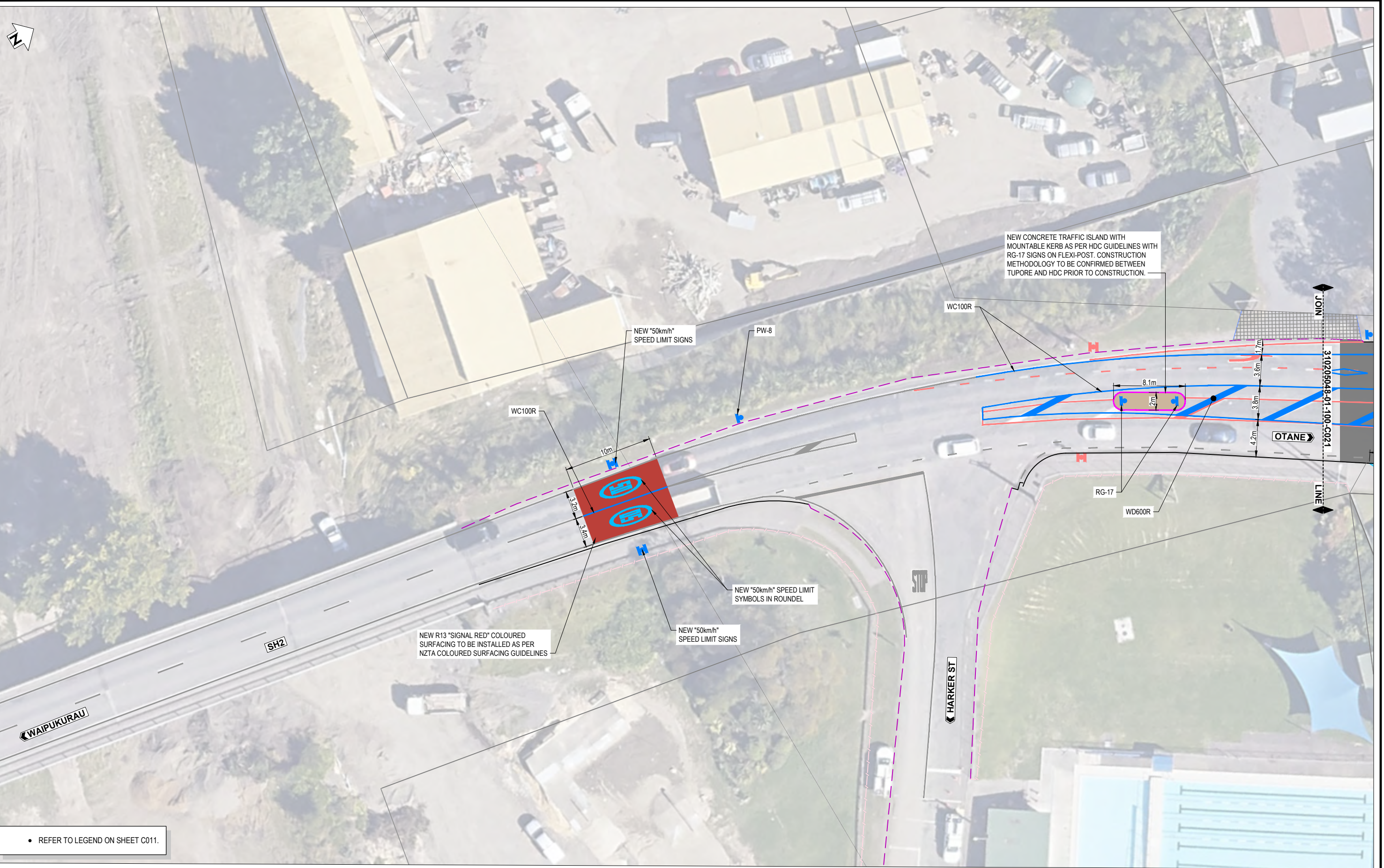
SUBJECT TO INTERNAL REVIEW

FOR CONSTRUCTION

1 FOR CONSTRUCTION		MF	CM	JD	03 24	SURVEYED				CENTRAL HAWKES BAY DISTRICT COUNCIL WAIPAWA "STREETS FOR PEOPLE" HIGH STREET (SH2) LEGEND PLAN	Status Stamp	FOR CONSTRUCTION	
REVISIONS		DRN	CHK	APP	DATE	DESIGNED					Date Stamp	27.03.24	
						DRAWN	Mahib Faisal				03.24	Scales	NOT TO SCALE
						CAD REVIEW	Charles Maaka				03.24	Drawing No.	310205560-01-100-C020
						DESIGN CHECK	Mahib Faisal				03.24	Rev.	1
						DESIGN REVIEW	Mike Skelton				03.24		
						APPROVED	Joanna Davenport	03.24					
						PROF REGISTRATION:							

DO NOT SCALE - IF IN DOUBT, ASK

ORIGINAL SIZE A1



• REFER TO LEGEND ON SHEET C011.



SUBJECT TO INTERNAL REVIEW

FOR CONSTRUCTION

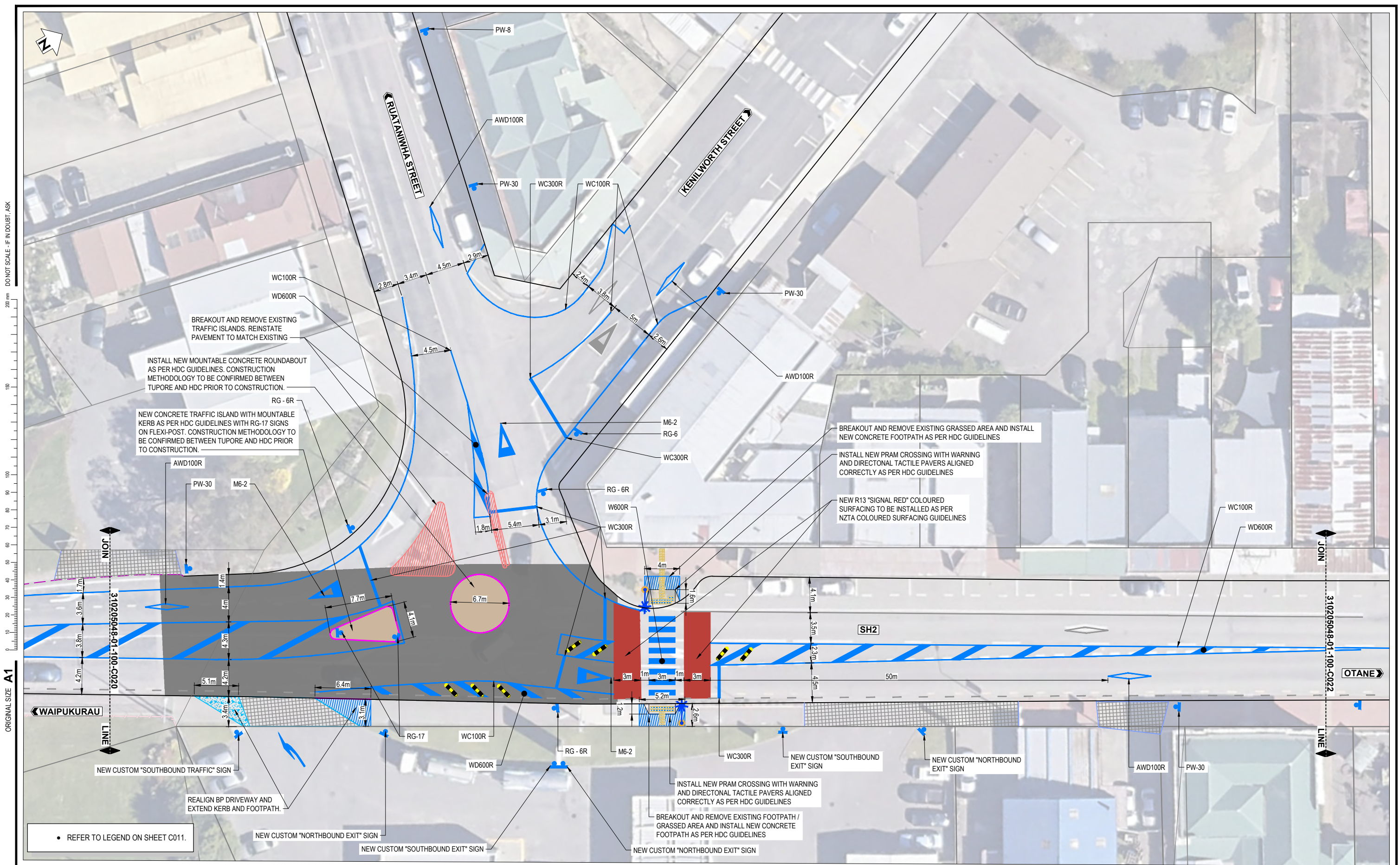
REV	DESCRIPTION	MF	CM	JD	03 24
DRN	CHK	APP	DATE		
1	FOR CONSTRUCTION				

SURVEYED			
DESIGNED			
DRAWN	Mahib Faisal		03.24
CAD REVIEW	Charles Maaka		03.24
DESIGN CHECK	Mahib Faisal		03.24
DESIGN REVIEW	Mike Skelton		03.24
APPROVED	Joanna Davenport		03.24
PROF REGISTRATION:			



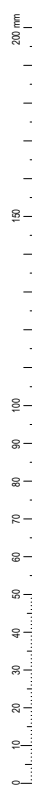
CENTRAL HAWKES BAY DISTRICT COUNCIL
 WAIPAWA "STREETS FOR PEOPLE"
 HIGH STREET (SH2)
 GENERAL LAYOUT PLAN - SHEET 1 OF 7

Status Stamp	FOR CONSTRUCTION
Date Stamp	27.03.24
Scales	1 : 200
Drawing No.	310205560-01-100-C021
Rev.	1



ORIGINAL SIZE A1

DO NOT SCALE - IF IN DOUBT, ASK



SUBJECT TO INTERNAL REVIEW

FOR CONSTRUCTION

REV	DESCRIPTION	MF	CM	JD	DATE
DRN	CHK	APP			
1	FOR CONSTRUCTION				03.24

SURVEYED	DESIGNED	DRAWN	CAD REVIEW	DESIGN CHECK	DESIGN REVIEW	APPROVED	PROF REGISTRATION:
		Mahib Faisal	Charles Maaka	Mahib Faisal	Mike Skelton	Joanna Davenport	

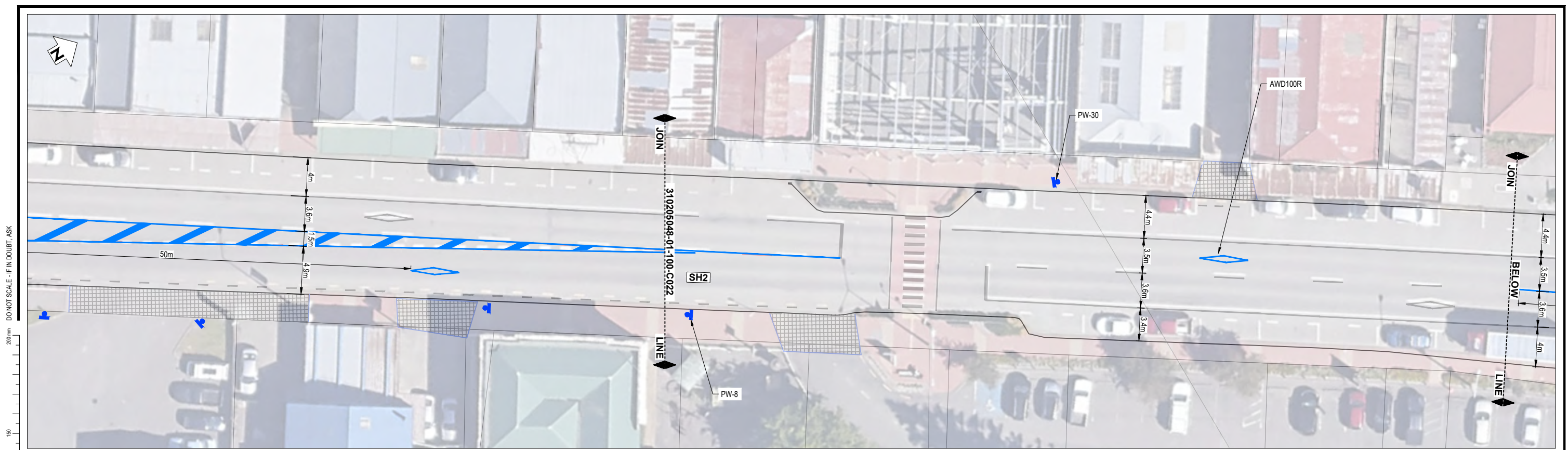
CENTRAL HAWKES BAY DISTRICT COUNCIL

WAIPAWA "STREETS FOR PEOPLE"

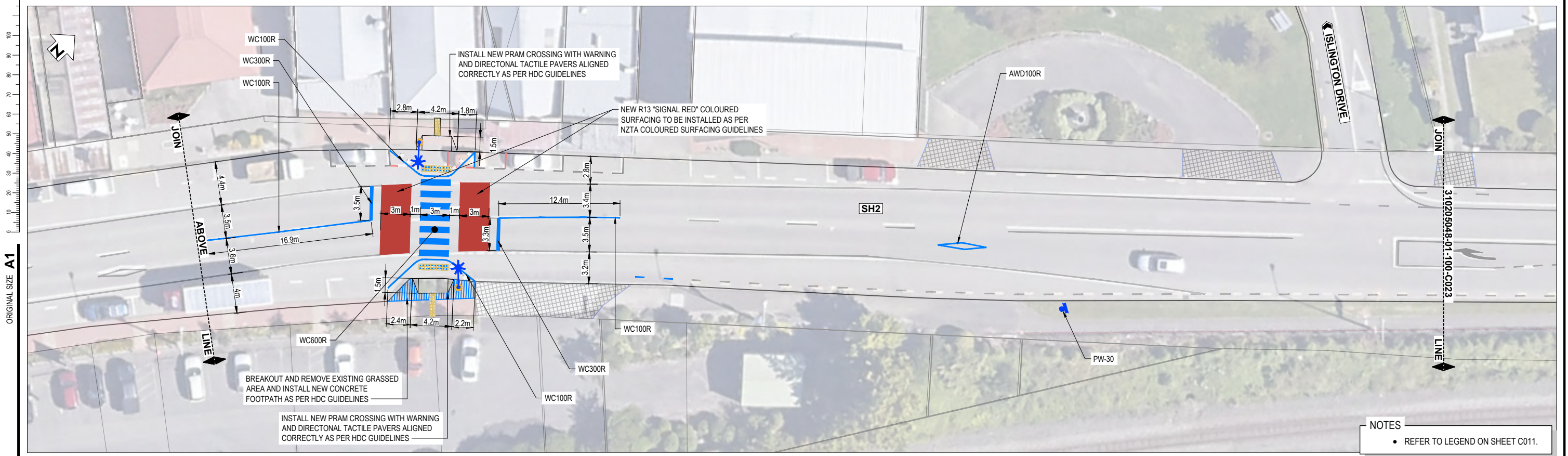
HIGH STREET (SH2)

GENERAL LAYOUT PLAN - SHEET 2 OF 7

Status Stamp	Date Stamp	Scales	Drawing No.	Rev.
FOR CONSTRUCTION	27.03.24	1 : 200	310205560-01-100-C021	1



PLAN
SCALE 1 : 200



NOTES
• REFER TO LEGEND ON SHEET C011.

PLAN
SCALE 1 : 200

SUBJECT TO INTERNAL REVIEW

FOR CONSTRUCTION

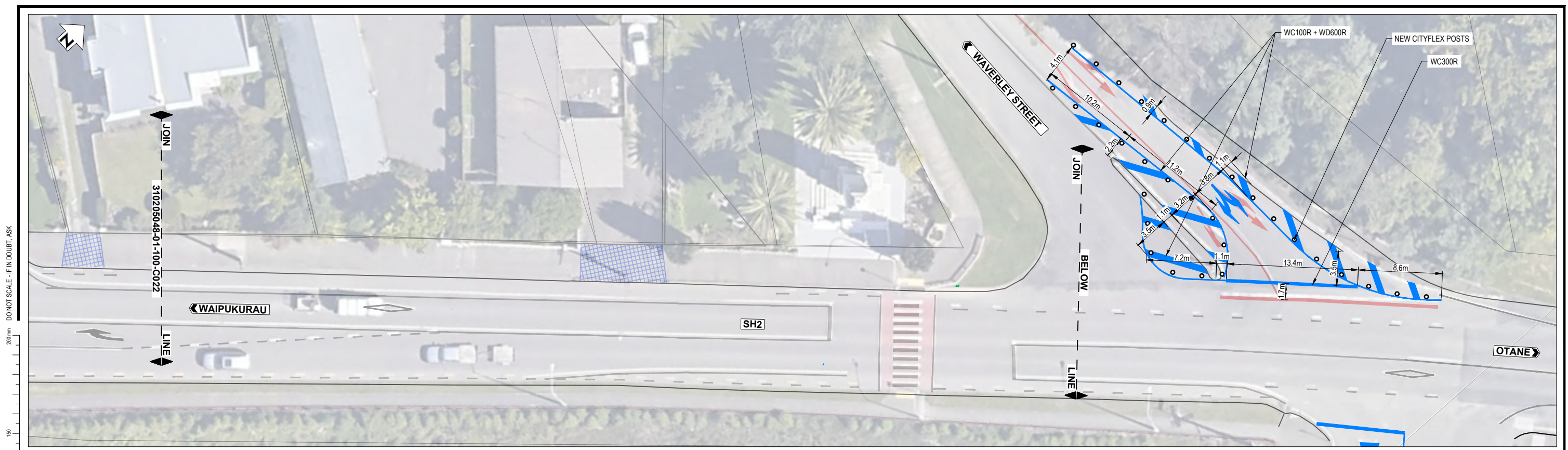
REV	DESCRIPTION	MF	CM	JD	03 24
1	FOR CONSTRUCTION	DRN	CHK	APP	DATE

SURVEYED		
DESIGNED		
DRAWN	Mahib Faisal	03.24
CAD REVIEW	Charles Maaka	03.24
DESIGN CHECK	Mahib Faisal	03.24
DESIGN REVIEW	Mike Skelton	03.24
APPROVED	Joanna Davenport	03.24
PROF REGISTRATION:		

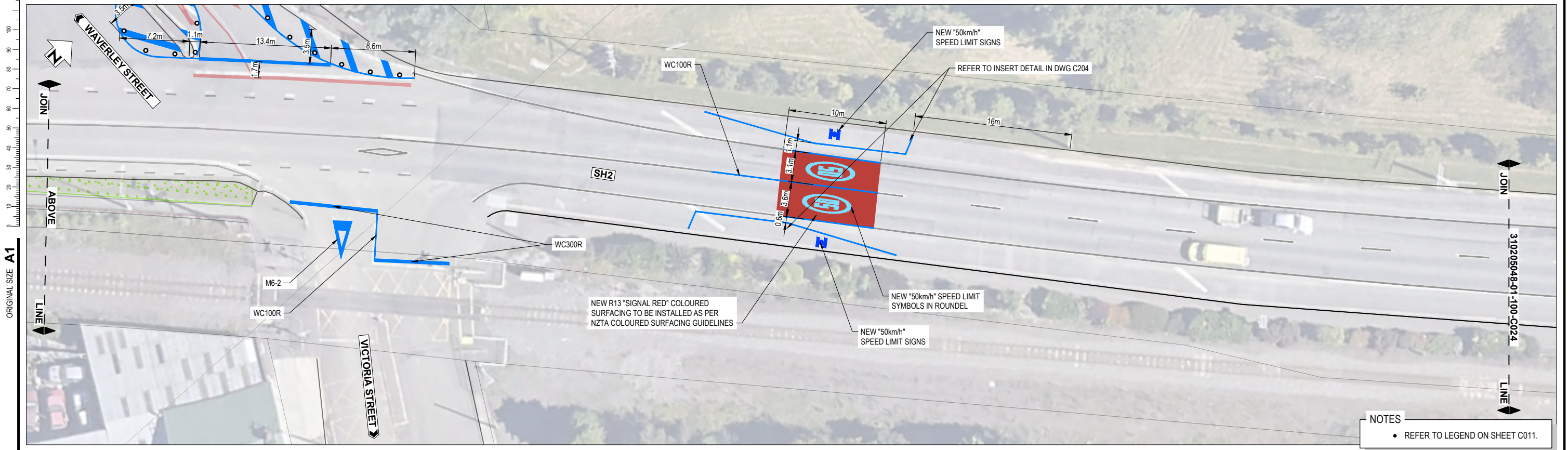


CENTRAL HAWKES BAY DISTRICT COUNCIL
WAIPAWA "STREETS FOR PEOPLE"
HIGH STREET (SH2)
GENERAL LAYOUT PLAN - SHEET 3 OF 7

Status Stamp	FOR CONSTRUCTION
Date Stamp	27.03.24
Scales	1 : 200
Drawing No.	310205560-01-100-C022
Rev.	1



PLAN
SCALE 1 : 200



PLAN
SCALE 1 : 200

NOTES
• REFER TO LEGEND ON SHEET C011.



SUBJECT TO INTERNAL REVIEW

FOR CONSTRUCTION

REV	DESCRIPTION	MF	CM	JD	DATE
DRN	CHK	APP			
1	FOR CONSTRUCTION				03.24

SURVEYED			
DESIGNED			
DRAWN	Mahib Faisal		03.24
CAD REVIEW	Charles Maaka		03.24
DESIGN CHECK	Mahib Faisal		03.24
DESIGN REVIEW	Mike Skelton		03.24
APPROVED	Joanna Davenport		03.24
PROF REGISTRATION:			

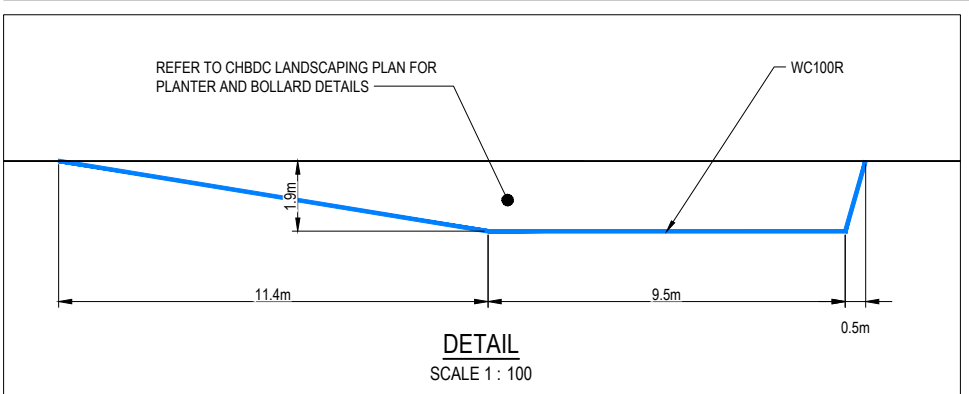
Client

CENTRAL HAWKE'S BAY DISTRICT COUNCIL

CENTRAL HAWKES BAY DISTRICT COUNCIL
WAIPAWA "STREETS FOR PEOPLE"

HIGH STREET (SH2)
GENERAL LAYOUT PLAN - SHEET 4 OF 7

Status Stamp	FOR CONSTRUCTION
Date Stamp	27.03.24
Scales	1 : 200
Drawing No.	310205560-01-100-C023
Rev.	1



NOTES

- REFER TO LEGEND ON SHEET C011.

SUBJECT TO INTERNAL REVIEW

FOR CONSTRUCTION

REV	DESCRIPTION	DATE	BY	CHK	APP
1	FOR CONSTRUCTION	03.24	JF	CM	JD
	REVISIONS		DRN	CHK	APP

SURVEYED		
DESIGNED		
DRAWN	Mahib Faisal	03.24
CAD REVIEW	Charles Maaka	03.24
DESIGN CHECK	Mahib Faisal	03.24
DESIGN REVIEW	Mike Skelton	03.24
APPROVED	Joanna Davenport	03.24
PROF REGISTRATION:		

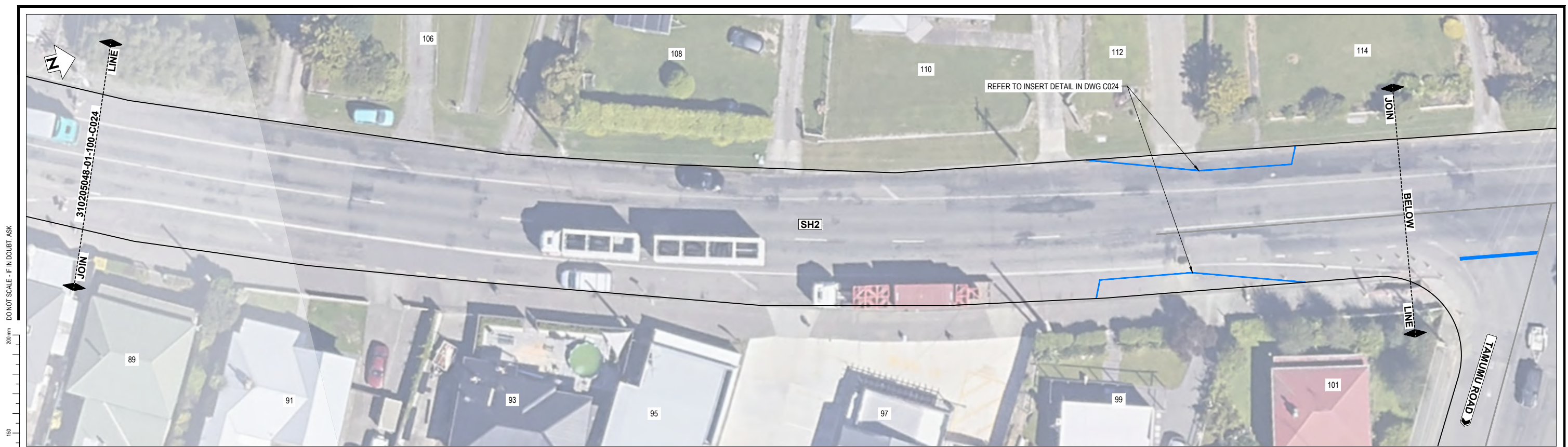
Client

CENTRAL HAWKE'S BAY
DISTRICT COUNCIL

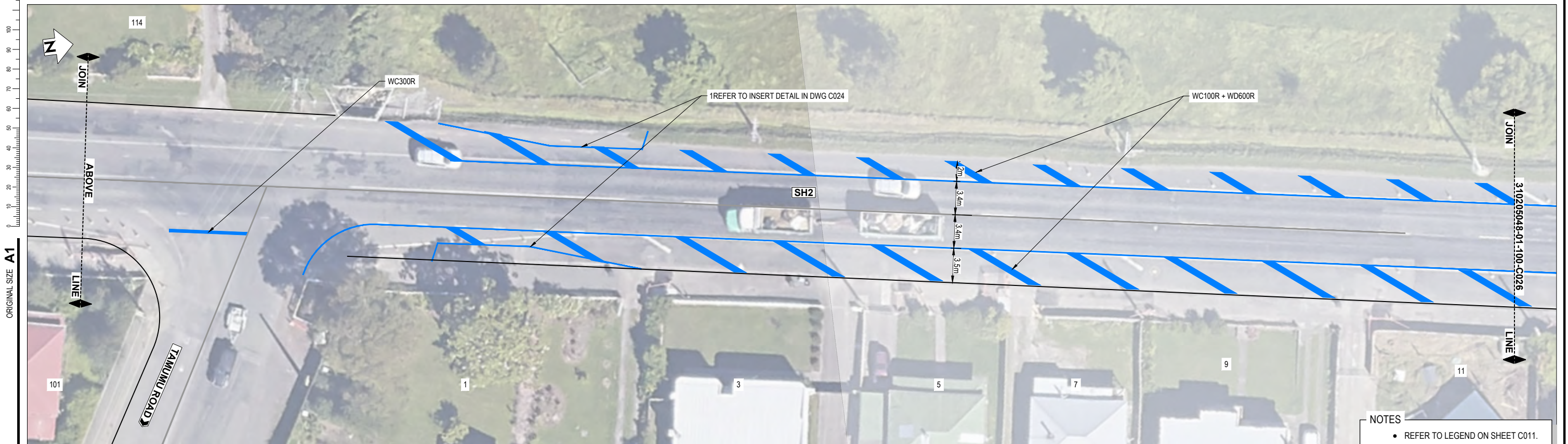
CENTRAL HAWKES BAY DISTRICT COUNCIL
WAIPAWA "STREETS FOR PEOPLE"

HIGH STREET (SH2)
GENERAL LAYOUT PLAN - SHEET 5 OF 7

Status Stamp	FOR CONSTRUCTION
Date Stamp	27.03.24
Scales	1 : 200
Drawing No.	310205560-01-100-C024
Rev.	1



PLAN
SCALE 1 : 200



PLAN
SCALE 1 : 200

NOTES
• REFER TO LEGEND ON SHEET C011.



SUBJECT TO INTERNAL REVIEW

FOR CONSTRUCTION

REV	DESCRIPTION	MF	CM	JD	DATE
DRN	CHK	APP			
1	FOR CONSTRUCTION				03.24

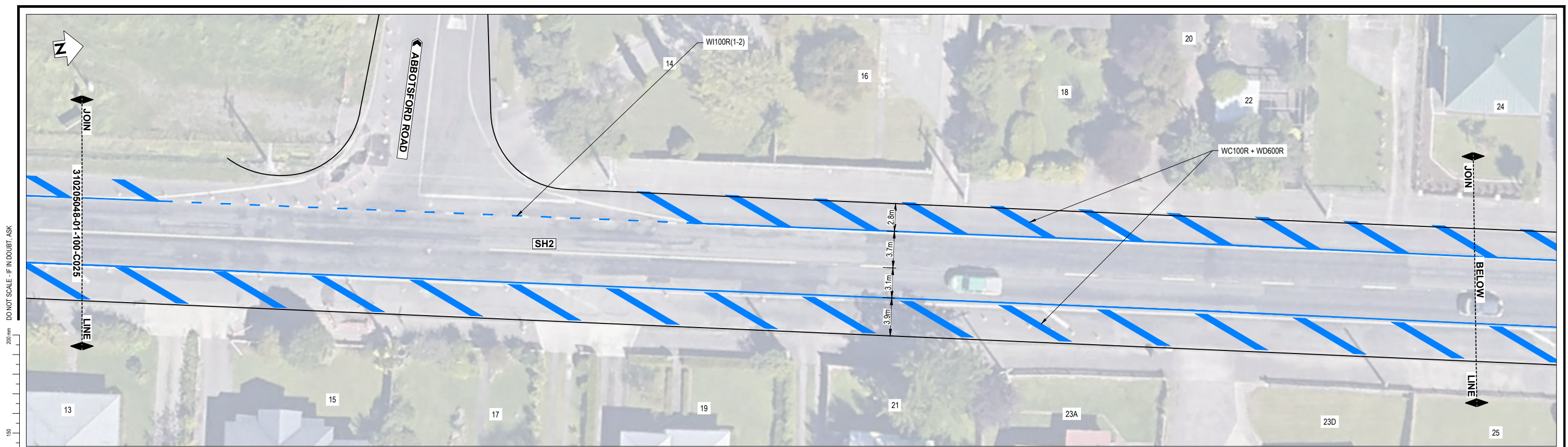
SURVEYED		
DESIGNED		
DRAWN	Mahib Faisal	03.24
CAD REVIEW	Charles Maaka	03.24
DESIGN CHECK	Mahib Faisal	03.24
DESIGN REVIEW	Mike Skelton	03.24
APPROVED	Joanna Davenport	03.24
PROF REGISTRATION:		



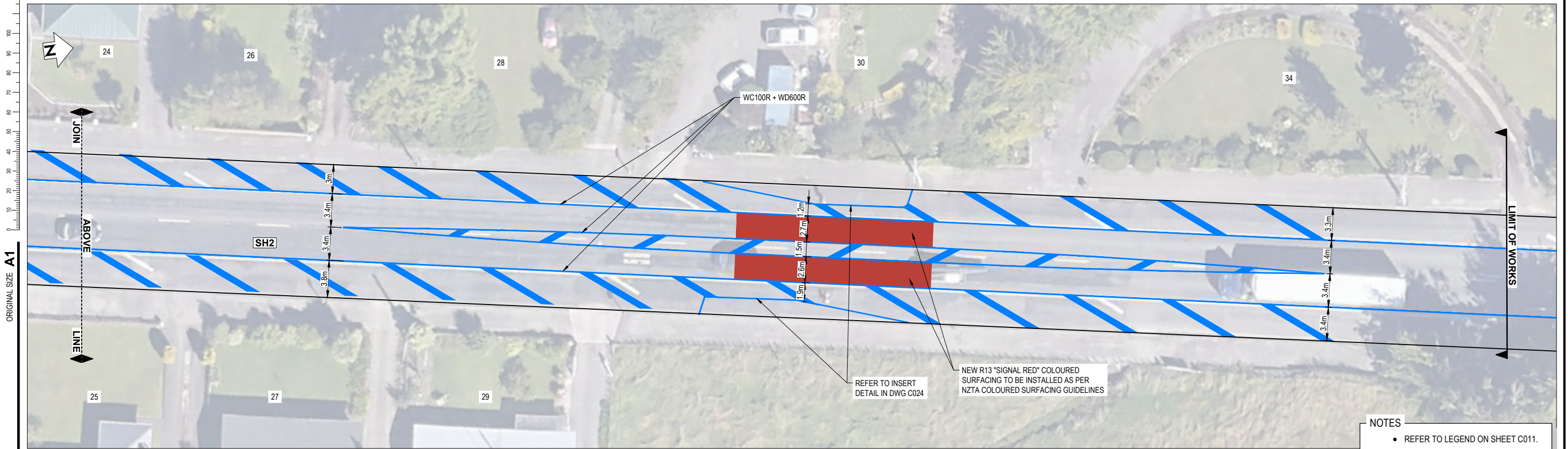
CENTRAL HAWKES BAY DISTRICT COUNCIL
WAIPAWA "STREETS FOR PEOPLE"

HIGH STREET (SH2)
GENERAL LAYOUT PLAN - SHEET 6 OF 7

Status Stamp	FOR CONSTRUCTION
Date Stamp	27.03.24
Scales	1 : 200
Drawing No.	310205560-01-100-C025
Rev.	1



PLAN
SCALE 1 : 200



PLAN
SCALE 1 : 200

SUBJECT TO INTERNAL REVIEW

FOR CONSTRUCTION

REV	DESCRIPTION	MF	CM	JD	DATE
DRN	CHK	APP			
1	FOR CONSTRUCTION				03 24

SURVEYED		
DESIGNED		
DRAWN	Mahib Faisal	03.24
CAD REVIEW	Charles Maaka	03.24
DESIGN CHECK	Mahib Faisal	03.24
DESIGN REVIEW	Mike Skelton	03.24
APPROVED	Joanna Davenport	03.24
PROF REGISTRATION:		



CENTRAL HAWKES BAY DISTRICT COUNCIL
WAIPAWA "STREETS FOR PEOPLE"

HIGH STREET (SH2)
GENERAL LAYOUT PLAN - SHEET 7 OF 7

Status Stamp	FOR CONSTRUCTION
Date Stamp	27.03.24
Scales	1 : 200
Drawing No.	310205560-01-100-C026
Rev.	1

SPEED HUMP

Rubber Speed Humps are ideal for slowing vehicles to a safe speed in car parks and private roadways.

Also used to separate cycleways across driveways where there is need for a physical buffer that can still be driven over by vehicles

Bolt-down interlocking design ensures quick and easy installation and allows for removal or relocation if required. This system is a great alternative to asphalt - rubber construction conforms to uneven surfaces. 500mm long modular sections join together to create your desired length with quick and simple installation.

- Interlocking modules for increased strength and fast installation
- 500mm long modules available in black and yellow
- Reflective cats eyes to enhance visibility at night
- Anti skid design, heavy duty recycled rubber
- Can be relocated if required

Code	Description	Size
49-SH50-B	Centre Module Black	500(W) x 400(L) x 50(H)mm
49-SH50-Y	Centre Module Yellow	500(W) x 400(L) x 50(H)mm
49-SH50E-B	End Cap Black	200(W) x 400(L) x 50(H)mm
49-SH50E-Y	End Cap Yellow	200(W) x 400(L) x 50(H)mm
49-FB	Fasteners for Bitumen*	M14 x 75mm - C/Screw & Plug
49-CF10	Fasteners for Concrete*	M10 x 75mm Anka Screw



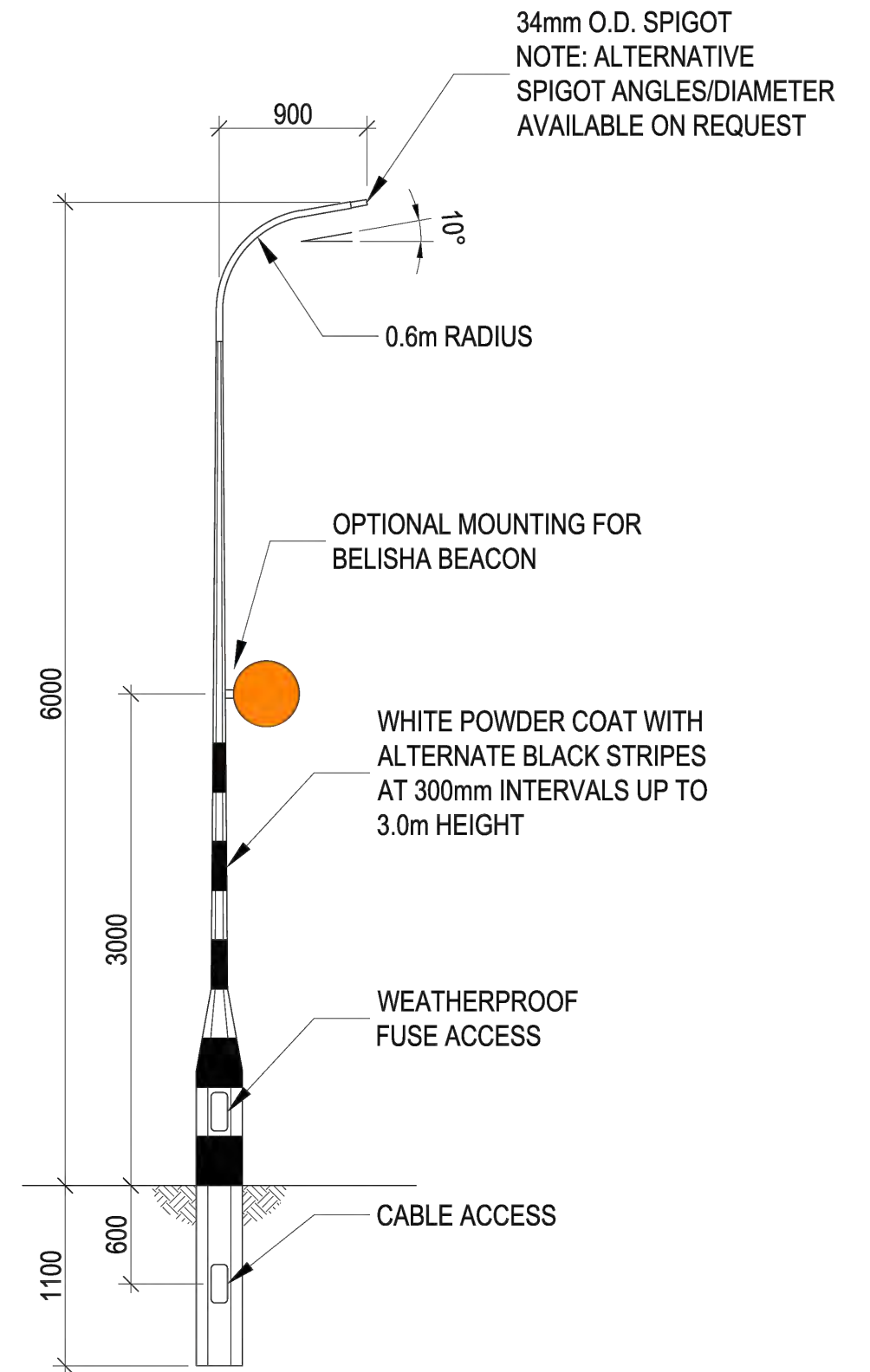
SCALE : NTS

CITYFLEX POST

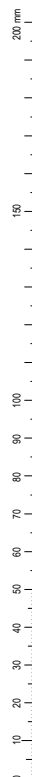


SCALE : NTS

SPUNLITE PEDESTRIAN CROSSING POLE



DO NOT SCALE - IF IN DOUBT, ASK



ORIGINAL SIZE A1

SUBJECT TO INTERNAL REVIEW

FOR CONSTRUCTION

REV	DESCRIPTION	MF	CM	JD	03 24
DRN	CHK	APP	DATE		
1	FOR CONSTRUCTION				

SURVEYED		
DESIGNED		
DRAWN	Mahib Faisal	03.24
CAD REVIEW	Charles Maaka	03.24
DESIGN CHECK	Mahib Faisal	03.24
DESIGN REVIEW	Mike Skelton	03.24
APPROVED	Joanna Davenport	03.24
PROF REGISTRATION:		



CENTRAL HAWKES BAY DISTRICT COUNCIL
WAIPAWA "STREETS FOR PEOPLE"

HIGH STREET RUATANIWHA STREET INTERSECTION
TYPICAL DETAILS

Status Stamp	FOR CONSTRUCTION
Date Stamp	27.03.24
Scales	NOT TO SCALE
Drawing No.	310205560-01-100-C170
Rev.	1