



CENTRAL  
HAWKE'S BAY  
DISTRICT COUNCIL



# Together we thrive!

Chief Executive's Report  
Central Hawke's Bay District Council

April - May 2022

*Together we Thrive! E ora ngātahi ana!*



# Our Strategic Direction

## Together we Thrive!

Our vision for Central Hawke's Bay is a proud and prosperous district made up of strong communities and connected people who respect and protect our environment and celebrate our beautiful part of New Zealand.

### What we know - Our DNA -



#### WORKING TOGETHER

Central Hawke's Bay will be stronger when we work together. Partnerships and collaboration are at the core of everything we do.



#### CUSTOMER EXCELLENCE

The communities we serve are our customers. They are at the heart of our decisions, interactions and communication. We'll engage with our customers to deliver value and exceed expectations.



#### PLANNING FOR TOMORROW

We will act with purpose, and think with a long-term lens to make sure our actions future-proof Central Hawke's Bay.



#### THINKING SMARTER

We need to think smarter and better in everything we do. With a culture of innovation and continuous improvement we will add value to our communities.



### What we stand for - Our Values -

Our values capture who we are and what matters most to us. They are the attitudes we embrace as individuals, teams and as a whole organisation. We are all personally responsible for acting with these in mind.

- T TRUST** - We create trust by acting with integrity.
- H HONESTY** - We do what is right even when no one is looking.
- R RESPECT** - We have respect for each other, our community and our stakeholders.
- I INNOVATION** - We find smarter ways to produce improved and sustainable results.
- V VALUING PEOPLE** - We are one team, supporting each other to succeed.
- E EXCELLENCE** - We deliver exceptional results.

### What we're most proud of - Our Greatest Asset -

People are our greatest asset. At Central Hawke's Bay District Council we are committed to providing a safe and great place to work that values diversity and inclusion, and develops skilled people who can lead our community to thrive.



### Why we do what we do - Our Purpose -

It's our goal to create an environment that supports a thriving Central Hawke's Bay district, by providing efficient and appropriate infrastructure, services and regulatory functions.



### The outcomes we want to achieve - Our Objectives -



- A proud district.
- A prosperous district.
- Strong communities.
- Connected citizens.
- Smart growth.
- Environmentally responsible.
- Durable infrastructure.

### How we'll reach our outcomes - Our Focus -



- Promoting smart growth.
- Attracting and enabling business success.
- Strengthening our district and community identity.
- Protecting and promoting our unique landscape.
- Planning for tomorrow to future-proof Central Hawke's Bay.



## E ORA NGĀTAHI ANA – TOGETHER WE THRIVE.

### KIA ORA KOUTOU FROM THE CHIEF EXECUTIVE

**This report provides an update of the organisation's activity over the April – May 2022 and provides a snapshot of some of the organisation's achievements and activity over the period.**

It's a great privilege to be presenting my first Chief Executive's Organisational report as Chief Executive of Central Hawke's Bay District Council – Te Kaunihera a rohe o Tamatea.

It was incredibly special to be re-welcomed into the organisation on 16 May with the Mihi Whakatau, led by local Manawhenua. The strong and heartfelt words shared speaks well to the existing special partnership we have, and I am looking forward to continuing to see this grow into the future.

As I did at my mihi whakatau, I want to acknowledge Her Worship Mayor Alex and Councillors. As an Elected Member, selecting a new Chief Executive is often the most significant decision that you will make any triennium, more so in a period of unprecedented growth and change - like that which we are currently in.

Thank you for valuing and recognising the sector leading and unique culture that we have collectively built as a high performing governance and management team, as we seek to continue to enhance the mana and momentum we have created to date. I am incredibly proud to be working alongside you all as elected members, this time in a new way as your Chief Executive, as we stay focussed on lifting the bar in public sector excellence and local democracy in New Zealand.

To the Central Hawke's Bay whanau, Executive Leadership Team, staff, contractors, community champions and leaders, thank you for your kind words, support and messages over these last few weeks. The decision to apply for the role of Chief Executive, to sustain the momentum we've created, and to enable and support you all in continuing the amazing mahi you deliver was an easy one to make.

Armed with the knowledge of who we are, where we've come from – but most importantly where we want to be - I'm incredibly optimistic for our future and the benefits that we will realise and bring to life for this community together.

The rohe of Tamatea – Central Hawke's Bay is an incredibly special place and again I am incredibly privileged to be working alongside you all, as we work to build a thriving Central Hawke's Bay of the future.

I also want to acknowledge again my family, Mum, Dad, Sarah, Cooper, Huddy and Zara. Thank you for giving me the space to grow and the opportunity to serve this outstanding community we get the privilege to call home.

### Ongoing Impact of Growth and COVID-19

In this report, I want to particularly acknowledge the continuing pressure and additional efforts staff are making as we continue to work through the continuing pressures of COVID-19, growth and additional workloads from one-off events such as weather.

With a number of vacancies across the organisation in hard to recruit activities compounding this, I want to say thank you to the teams and individuals working hard to deliver on a thriving Central Hawke's Bay.

### Reform and Change

At the time of writing while we are waiting for the Water Services Entities Bill 2022 to be introduced into Parliament, we continue to participate and prepare the organisation for change to its three waters services. This has included being involved in Requests for Information, as well as a number of staff being involved in working groups for the transition. With a range of other reform underway and with pace, we are collectively working to ensure we are over the programmes that matter and will continue to impact and change the face of the Councils into the future.

Again, I am incredibly proud to call myself Chief Executive of this outstanding organisation and am very positive of our collective future, and the value and positivity we will create together for this community

Ngā mihi

**Doug Tate**  
Chief Executive

# Activity

## Updates



## SOCIAL AND ECONOMIC DEVELOPMENT

### Delivery on Strategy and Wellbeing Committee Priorities

Two new strategies were adopted at the Strategy and Wellbeing Committee Meeting on 5 May 2022.

- The *Community Wellbeing Strategy 2021 – 2031* provides a blueprint for a connected, caring, resilient community in which everyone has an opportunity to thrive, and embeds the strategic goals of Project Thrive in the future of the district. It confirms and extends the goals of Thrive into the future as the cornerstone of everything Council does, from roading to wastewater activities to facilities management and customer service.
- A new *Social Development Strategic Framework 2022 – 2027* weaves together the strands of community networks and explains how issues are identified, prioritised and escalated where necessary. This strategic framework is based on extensive consultation with our community partners, mana whenua and stakeholders both locally and regionally, as well as with Central Government representatives. Council's social development role is to support and facilitate initiatives to improve community wellbeing which can only be achieved in partnership with our community networks.

The adoption of these two documents reconfirms Council's commitment to community wellbeing as a foundation for all their work, and their key role of supporting community networks to build services that tie into the shared vision of a thriving Central Hawke's Bay and keep THRIVE ALIVE.



### Safer Central Hawke's Bay

The easing of COVID restrictions have seen the network return to a more normal way of working and many of the work streams have been able to engage in face-to-face activities and events over the past few weeks. The coalition group have met once during this reporting period.

The highlight during this period was the suite of activities delivered to the community as part of road safety week. Held between 9 and 13 May the Road Safety workstream planned and delivered a range of events throughout the week. These events were varied and deliberately designed to ensure we delivered road safety messaging and education to all age ranges in our community. Activities included:

- Road Safety colouring in competition held in conjunction with the CHB Libraries holiday programme
- Cycle Safety and cycle skills for children at Russell Park
- Youth event at Central Hawke's Bay College
- "Caught Being Good" check points in Waipawa and Waipukurau
- Staying Safe Older Drivers refresher course
- Media promotion of Road Safety messages

- Car Restraint clinic (postponed due to weather and will be rescheduled)

This is the first time a coordinated approach to Road Safety Week has been delivered in Central Hawkes' Bay and was made successful by the strength of the network and the participating agencies listed below.

- Roadsafes HB
- NZ Police
- Central Hawke's Bay District Council
- Parents Centre
- EPIC Ministries and Inspire Youth Council
- CONNECT Youth and Community
- Age Concern
- Sport Hawkes' Bay
- Brain Injury HB



The Safer Homes workstream held a Free Electric Blanket Check clinic on Friday 27 May. Partner organisations participating in this fire prevention initiative included FENZ, CHB Red Cross, Central Hawkes Bay Libraries, Weavers Electrical, Owen Spotswood and Mitre 10. It was the first time an event such as this has been held in Central Hawke's Bay and 22 blankets were checked during the day.

Six of these blankets failed the safety check and were disposed of, with their owners offered a discounted price on a new electric blanket by Mitre 10 Waipukurau.



## Central Hawke's Bay Older Persons Network

The network has met twice during this reporting period.

The network contributed to Road Safety week with Age Concern hosting a Staying Safe Refresher Course for Older Drivers on the 12 May 2022. Sixteen of our older residents attended this free 6-hour workshop and this initiative aligns with the networks priority areas of creating independence, reducing barriers and reducing social isolation.



A range of events and activities have been organised for the annual Elder Abuse and Neglect week promotion, and a workshop upskilling partner agencies on Mental Health and Wellbeing of older people has been set for Monday 4 July.

## Central Hawke's Bay Disability Network

The network has met once during this reporting period. The focus for the network has been on the development of the booking system for the All Terrain Beach Wheelchair and the launch to the community on Tuesday 31 May. We are extremely grateful to the management and staff of Aqua Management who have agreed to manage the bookings and house the All Terrain Wheelchair for the network.

## Youth Development Network

This network has met twice during this reporting period and have identified the following priorities for 2022.

- Youth Development
- preventative and pro social
- Youth at Risk
- Alternative Education
- Crime
- Youth Spaces
- Building Capacity
- Training/upskilling
- Increasing youth workers
- Corrective training
- Communication
- Who Are We?
- Understand who is working in the youth space in Central Hawke's Bay
- Service provision in Central Hawke's Bay

The network has been active and visible in our community during the past weeks including:

- Hosting a youth event at Central Hawke's Bay College during Road Safety week. Over 300 young people actively engaged with a range of organisations promoting road safety messages during their lunch break.
- Being the Hawke's Bay hosts of the Aotearoa Youth Employability Conference at Te Huinga Wai Knowledge and Learning Hub on Thursday 26 May.
- Delivering another successful Youth Week and Pink Shirt Day event at the Central Hawke's Bay College on Friday 20 May. A highlight of Pink Shirt Day was working alongside Age Concern from our Older Persons Network to capture video footage of young people telling us about the special older people in their lives and what they mean to them. The voices and insights gathered will form part of the upcoming Elder Abuse and Neglect promotion in June.



## Central Hawke's Bay Food Secure Network

The network continues to work together to ensure that every person has access to affordable, nutritious and sustainable food to meet their needs. We have secured additional funding from the Ministry of Social Development to invest into infrastructure which will increase the capacity of our community food distribution network.

## COMMUNITY FUNDING

### COGS Community Workshop

In early May we invited Department of Internal Affairs (DIA) staff to the district to facilitate workshops on their Community Organisation Grants Scheme fund (COGS). The workshops, which were held on 2 and 9 of May for 2 hours, provided an opportunity for local community group representatives to speak face to face with DIA staff. 14 people took advantage of this offer and were delighted to receive information and assistance to support their applications for annual COGS funding, which closed on 18 May 2022.

### Central Hawke's Bay Funding Roadshow

The inaugural Central Hawke's Bay Funding Roadshow was held at the Municipal Theatre from 7-9am on Monday 4 April 2022. Funders such as Eastern and Central Community Trust, Sport Hawke's Bay, HB Foundation, Department of Internal Affairs, Te Puni Kokiri and Funding HQ attended and spoke about all the funding options or support they have available. The event was offered in person and streamed online via Facebook. Over 36 people attended in person and 15 watched from the comfort of their own home. This event proved to be successful as it meant a wide range of people, organisations and community groups were offered an opportunity to hear about funding they could apply for. The presentations were all recorded and have been made available to watch in the future via our website.



### Creative Communities Fund

The Creative Communities Fund is currently closed.

At its last meeting the Creative Communities Panel decided to create a billboard which can be displayed when the funding rounds are open. The hope is that more people will apply to the fund as a result of driving past the billboard. The billboard is currently in the process of being designed.

### Community Voluntary Organisation Support Fund (CVOS)

CVOS is currently closed.

### Community Pride and Vibrancy Fund

There have been no applications to the Community Pride and Vibrancy fund in this reporting period

### Rural Travel Fund

The Rural Travel Fund is currently closed.

## COMMUNITY PLANS

Regular reporting is provided in greater detail in the Strategy and Wellbeing Committee Priority report. Highlights for the period include:

### Tikokino

Following on from the second community workshop held on Saturday 26 February, the draft plan has been updated with feedback provided on the day and the working group have also met twice to further refine the document. Final details, including sourcing images, are currently being worked on with council officers and the community working group.

## Otane

Council officers met with a small group of Otane residents in May for initial discussions on their community plan. Planning is underway for the first community workshop to be held in late June/early July.

## Takapau

The Takapau Community Plan was adopted by Council on 24 September 2020. A number of smaller focus groups continue to work on actions points and priorities from the plan. These include exploration of a Mobile Home Dump Station in the township as well as several ongoing initiatives around the concerns of driver behaviour in Sydney Street.

## Ongaonga

The Ongaonga Community Plan was adopted by Council on 24 September 2020. Several smaller focus groups continue to work on action points and priorities from the plan.

## MĀORI ENGAGEMENT – TŪHONO MAI TŪHONO ATU

The Pou Whatūia reports regularly to the Strategy and well-being committee.

The engagement priorities for this period have been:

The organisation of "Powhiri" and "Whakatau" ceremonies for outgoing Chief Executive Monique Davidson and incoming Chief Executive Doug Tate. Both events highlighted our progress as an organisation committed to adopting appropriate cultural practises, protocol and tikanga as guided by Mana whenua. Councillors, Mana whenua, staff and officials travelled through to Levin to support the Powhiri for Monique at Horowhenua District Council. The Whakatau for Doug new Chief Executive to Central Hawkes Bay District Council saw a range of officials from Central and Local Government attend with a large contingent of staff, locals, and Mana whenua.

The Wall Walk Treaty Training was conducted on the 27 May after having to be postponed due to COVID last year. The training was delivered by Dr Simone Bull, her PhD in gathering statistics about Māori in the justice system from the 1850s and onwards led to her interests in the history of bi-cultural relations and racial inequity in New Zealand. Dr Bull has developed the part theatre, part korero, part study Wall Walk training and has delivered to a range of organisations across New Zealand. The outcome of this training is designed to bring about an awareness of relations between the Crown and Māori.

The Coastal Hapu of Ngāti Kere, Ngā Hapu o Ngai Te Oatua Trust, Ngā Karanga Hāpu o Kairākau and Kairākau Lands represent iwi along the Coast. Future hui between the hāpu groups and Council are to be encouraged to strengthen relationships.

## Te Kupenga

The Te Kupenga team of Māori Managers across the 5 Councils priorities for this period has been to carry out the upgrade of the Te Kupenga application and then relaunch. The App has several new features and at this stage will be launched in June in time for Matariki.

The App has been used widely across all Councils in Te Mātau a Maui. With the added new functions such as sending out push notifications and being able to record yourself enhancing the user's experience. Some recordings have also been modified.

There will be a national hui held under the umbrella of Taituarā and the Māori collective Te Pae Urungi who will meet with Minister Mahuta in June.

## ECONOMIC DEVELOPMENT

### New Regional Economic Development Agency (REDA)

The Establishment group who are responsible for setting up the new Regional Economic Development Agency for Hawke's Bay are working closely with the Matariki Governance Group on the appointments processes for the final entity. Councillors can expect an update in workshop on the item.

## Central Hawke's Bay Business Network

The second Central Hawke's Bay Farmers Market was held on Saturday 7 May 2022. This market showcases all that Central Hawke's Bay has to offer with over 40 local providers coming and selling their goods. Food trucks were present as well as the Waka Takāro which entertained the kids whilst the parents had something to eat and drink. There were close to 2000 people attending this event and people travelled from as far as Hastings, Napier and Dannevirke to attend. Planning has begun for the next event which will be a part of the Spring Fling in September.

The Central Hawke's Bay Business Network had its first meeting on Tuesday 10 May with local business owners attending and being led by Shelly Birdsall from Shop Central Hawke's Bay and Matt Sissons from Espresso Loco. The purpose of the network is to bring local businesses within Central Hawke's Bay together to network, work together on initiatives, provide insights into local trends and understand regional trends. The network will meet every 6 weeks with the hope of growing in attendance and representation of a range of industries and sectors.

## Economic Recovery

### Tukituki trails extension project

Whilst we had the project work on the last bridge ready for completion, the weather event in March has impacted heavily. The loss of the swing bridge and the damage to the Tukituki trails means that we are now in a phase of recovery. Work is well underway with the help of HBRC, volunteers, Rotary and BT Ago to mend the tracks and options to re-build the swing bridge are underway. Any materials from the swing bridge that could be recovered will be used to help restore along the trails.

## Jobs in Central Hawke's Bay - Turanga Mahi ki Tamatea

Local Jobs for Local People - the Jobs in Central Hawke's Bay team continues to support local jobseekers and employers to connect the dots and facilitate sustainable employment in our community. We have had **40** new jobseeker referrals through the Mobile Employment Hub through April & May with visits to our outlying villages, Otane, Ongaonga & Tikokino resuming as well as our regular pop-up locations in Waipukurau, Waipawa, Takapau and Porangahau. When not out and about in the Mobile Hub our team is based at Te Huinga Wai – The Knowledge & Learning Hub in Waipukurau and meet with jobseekers and employers there too.



**Fruition** - Through the Skills, Training & Employment Network we connected with Fruition, and have worked closely with Antony (from Fruition) to get young jobseekers on their Tū Te Wana course – a great pathway into the horticulture industry. This course builds work readiness and pathways into local employment opportunities in our local Craigmere Orchard. We are excited to see how this goes, working with some of our less 'work ready' jobseekers to build them up into valuable contributors to the workplace, in a local career pathway that needs more staff. The current course has 11 participants and 6 of those are Jobs in Central Hawke's Bay direct referrals, the course includes 3 days/week paid work experience and pathways into ongoing employment in the local horticulture space. This is a great model for getting job seekers into the horticulture industry and Jobs in Central Hawke's Bay are looking at how we can replicate this model but in a general sense rather than specific to an industry.

Jobs in Central Hawke's Bay in partnership with our local Youth Development Network are hosting the [YEA Conference 2022](#), with online viewing available for Hawke's Bay on Thursday 26 May. This will allow us to offer this conference to our local providers, continuing to build our collaborative network.

Our numbers for the bi-monthly Business After 5 events are improving with 30 attending our April event and many of those being new faces that haven't attended a BA5 before. The April BA5 was focused on the project we were supporting with Digital Boost and Zeald to see our businesses thrive in the digital space.



#### Business Connect Details

Total Business List	769
Business Connections	304
Has Attended a BA5	44
Coming to the next BA5	0
<b>New Businesses Connected this week</b>	<b>27</b>
New Business Connections in the last 30 days	41
Monthly Email Subscribers	624
Business Connections in last quarter	120

#### Growing Great Entrepreneurs

GGE Course Applicants	38
GGE Waiting List	12
GGE Course Completed	22
New Business Established	17
Existing Business Supported	2
GGE Mentoring Participant	17
Current GGE Participants	6



We continue to send out the monthly Business Connections Newsletter which is being received by 587 businesses and approximately 50% of those opening and clicking on the links and information provided within. This month the newsletter focused on business wellbeing and the importance of networking.

The next [Growing Great Entrepreneurs](#) program started on the 17 May with a full group of 6. The feedback from these courses has been extremely positive and the outcomes been highly successful. Our last program saw 5 from 6 completing and starting their new businesses. We continue to support those entrepreneurs with pastoral care in the way of business mentoring and offering our support where required to see them continue with the creation of a successful Central Hawke's Bay business.

We continue to work with the Hawkes Bay Chamber of Commerce to bring relevant workshops and the likes to Central Hawke's Bay.



This month we are working with Leaine Jones, Accountant, to run a free 2-part workshop for all levels. This is an opportunity for businesses to upskill with Xero. 8 businesses attended the first workshop.

There has been a positive response to running three workshops with Jodine McIntyre from Social Smarty. There will be beginners, intermediate and advanced sessions run over the course of 2 months for social media and marketing lessons. There were 12 businesses that attended the first beginner's session.

We currently work with David Trim, Business Mentor through the Growing Great Entrepreneurs program together with Profit

Club. There appears to be a gap in support between those that are starting up businesses and those that have well established businesses; therefore, we are working with David to create a Central Hawke's Bay Business Support Programme. This will bridge the gap in support and offer those that require some additional guidance 1:1 to ensure their business stays on track.

Jobs in Central Hawke's Bay continues to receive positive feedback from having a focus on local businesses and supporting them where we can.

**Youth Transitions** - There has been continued collaboration in the youth space that has seen youth realise we are here and we will support them and follow them up. We have noticed the continued need for support around accessing and following through with such things as student allowance or loan enrolments and having the space and support to make the follow-up phone calls needed to Student Loan services.

We continue to work with the Year 13 college students and have 13 students closer to completing their CVs.

April has seen time spent following up youth to get them engaging with courses available and it has been encouraging to see 3 youth that were disengaging at school take the leap and take up the challenge to be involved with the Fruition course. At times the young people are hesitant to try new things and we are often being that reassuring ear so they will step out and take a risk.

The youth transition space is also continuing to build a relationship with the home schooling network and with the new local Te Kura coordinator to be able to connect and offer support to the youth they may be working with.

We will be surveying our local year 11 & 12 students with our [Student Pathway Survey](#) this term, allowing us to build connection and rapport with the students before they leave school in order to better support them as they transition into further training, education & employment.



**Holiday Work Experience** - Tyler Deeds (back row, second from right) pictured with representatives from Central Hawke's Bay District Council Project Management Office. Tyler spent time with team members over the recent school holidays to get a glimpse into working within Council. Tyler, a local year 13 student, initially approached Jobs in Central Hawke's Bay through our Mobile Employment Hub looking for a chance to explore career opportunities in environmental work. As he is coming to the end of his secondary schooling and thinking about what is next. We facilitated the opportunity to spend time shadowing various staff in project management and waste management to help Tyler get a broad understanding of potential career pathways. Tyler's

experience was very positive, and he now has some great questions to take back to his school careers councillor to help plan his next steps.

**Te Māhuri** - This wage subsidy initiative allows the team to support local job seekers into employment and local employers to take on an employee at low cost to them for the first 6 months. The team has monthly catch-ups to check in on progress and ensure both parties are thriving, identify any concerns and offer support. One of our current Te Māhuri placements at a local law firm has done really well, and has secured a permanent position starting in July. To date 7 participants have completed the Te Māhuri work placement, with 5 securing ongoing employment, we currently have 5 more participants in their work placement. One of the 2 not in ongoing employment lost his role due to the business he was placed-in closing. We are working closely with him to secure ongoing employment.

Our [Apprentice Support Workshops](#) continue to provide great support to our local trainees. One apprentice mechanic has completed the paperwork component of his training in one year, by regularly attending the workshops. He has completed 90% of the work in our evening workshops – and just has his practical left to get signed off.

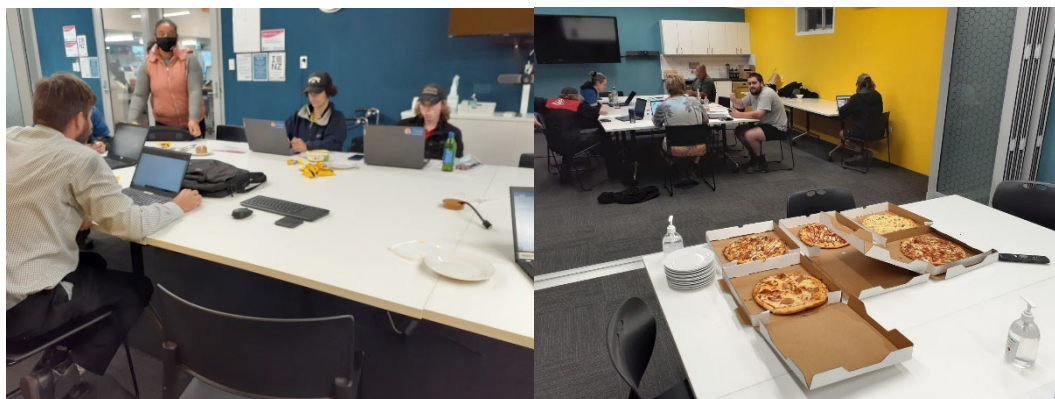
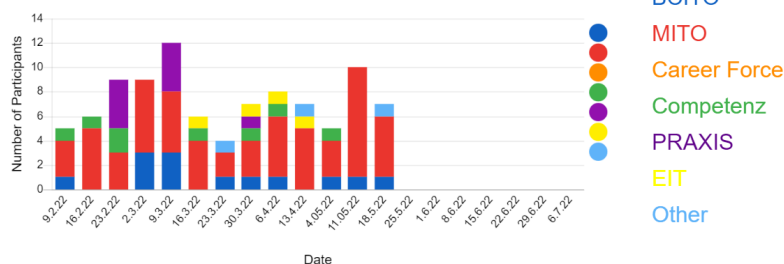
We look forward to hosting National MTFJ Coordinator Emma Anderson on June 1 to showcase the apprentice workshop and explore how it could be delivered in other rural communities around New Zealand.

## Apprentice Support Workshops

### CHB Apprentices 2022

Current Workshop Participants	25
Completed Apprenticeship	1
Maori	13
BCITO	14
CAREERFORCE	2
COMPETENZ	6
MITO	15
The Skills Organisation	1
PRAXIS	4
Total Participants	45

### Weekly Participation by ITO



**An Opportunity to explore Wastewater** – Central Hawke's Bay District Council's PMO, and partners LEI & Beca, showcased wastewater at the Waipukurau Treatment Plant on Thursday 5 May 2022 to 8 students and their teacher from the CHB College Environmental Council. The group was able to visit the site and learn about how the treatment plant works as well as hear more about the wastewater story. A great opportunity for the college students to be exposed to this environment and encourage their future thinking.



**Central Hawke's Bay College Workday** –Central Hawkes Bay District Council hosted 10 students from the college in various roles across council, giving the students an opportunity to explore potential career pathways within their local council while fundraising for the school. Thank you to the Project Management Office, People & Capability, Central Hawke's Bay Libraries, Council Archives and 3 Waters Teams for providing these opportunities.

**Visit from Wairarapa Youth 2 Work team** – Jobs in Central Hawke's Bay hosted the team from Wairarapa in an effort to share stories and showcase what's working well in each of our contexts.

## He Ringa Whānau Ora

He Ringa Whanau Ora continues to progress their kaupapa with whānau within Tamatea Central Hawke's Bay. The mahi is extending beyond the core role and includes providing intervention to inhibit the growth of mental

health issues in the workplace and workforces within the rohe. Kaimahi have also reviewed timing of their engagement relative to the impact and developed a number of ways to improve in this space.

## TOURISM

### Spring Fling Planning

Even though we are now well into Autumn, planning for the next Spring Fling event in Central Hawke's Bay is well underway. A lot of work happens behind the scenes for events like this and our partners Hawke's Bay Tourism have been working hard on our behalf to facilitate the programme design and a prospectus was sent out to all interested parties with registrations now complete. 17 events have been successfully confirmed on the programme and work is now underway to start organising the advertising schedule and programme design.



# DRINKING WATER

## Drinking-Water Compliance

### District Drinking Water Supplies

Another successful period as we achieved compliance across all water treatment sites and distribution zones throughout the months of April and May.

There has been no significant change or events throughout the period, although progress is regularly made by the team in preparation for the updated drinking water standards due in July of this year.

A number of private bore supplies in Otane are currently experiencing high nitrate levels in excess of the maximum allowed values (MAV). This has been notified to the Hawke's Bay District Health Board who are actively working with the property owners to find a solution. We are currently monitoring our own supplies and have identified no change or areas of concern, noting that the Otane supply is located on Tikokino Road, Waipawa.

### Operational update

A downturn in RFS's for the period has provided little respite for the team as they continue to tackle an extensive list of historical and high priority network issues. New connections and capital works continue to be a focus for the team; however, limited resources and high demand continue to drive a primarily reactive response. We have been working closely with our contracting partners to create new efficiencies across the reticulation space, with research into more collaborative works at the fore.

A challenging period for the team, with extensive works completed as part of the recovery from March's storm event, over 50% of the team affected by COVID and delivery of a number of key projects alongside the PMO (Project Management Office) team. Regardless of the challenges, the team ensured continued delivery of three waters services throughout April and May, with a number of noteworthy successes and delivery of key improvement items.

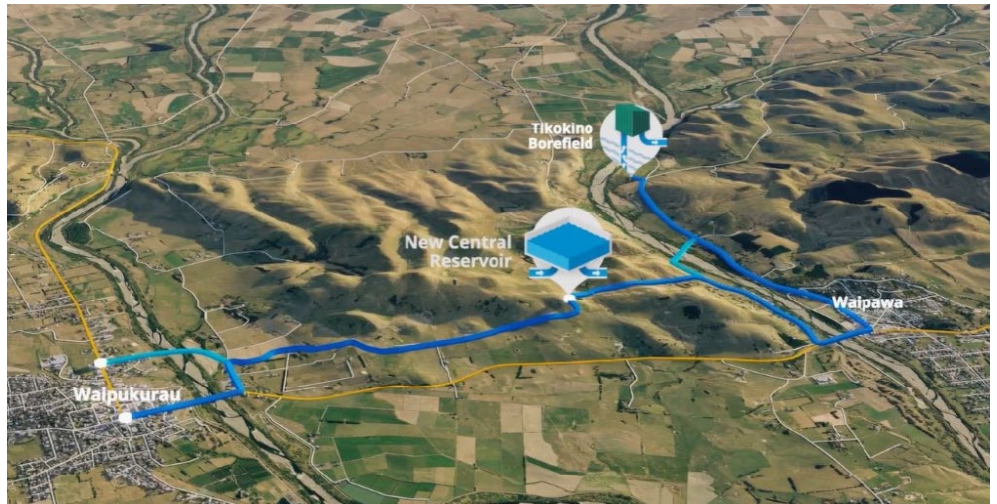
The team continues to work well with the community, always ensuring engagement with key groups and critical customers. Delivery of the two Waipawa water supply network shutdowns was a overall success, with only an isolated number of properties affected without the correct notification.

We welcomed a new starter in Cory Rees in the month of May as he joins our Water Treatment team from Water Testing Hawkes Bay. Cory has considerable experience in the water treatment industry, which will prove to be invaluable to our compliance team in the continued delivery of safe and compliant drinking water for the district.

### Waipawa to Waipukurau Water Supply (W2WS)

In May 2022 council approved the project to progress to construction and a budget increase to \$15.8, with the river crossings to be confirmed in 2023 once relevant due diligence has been completed, officers are now planning the construction sequencing, finalising landowner agreements and consents required.

Watch this space over the coming months as the project progresses further.



## Tikokino Mains

### Upgrade (Stage 2 and 3)

Work on Tikokino Road Stage 2 and 3 highlighted are progressing, and our contractor Russell Roads are aiming for June 2022 completion. This will see 2.6km of the existing 225mm AC main upgraded to 400mm PE for the first 1.6kms and 280mm PE for the next 1.1km to the future tee location for the new trunk main to go up onto Abbottsford Road.

To date approx. 2.4km of pipe has been installed and the project is at 80% complete. With a pipe bridge to be completed on Tikokino Road and the valves and flushing hydrants to be installed prior to a change over.



### Waipawa/ Otane Firefighting and Shortfalls (Stages 1-3)

Works are underway on Stage 1 and 2 – are due to be completed in June 2022, all pipe is in the ground and a major shutdown occurred in mid May 2022 as 3 main connections occurred to allow the system to be changed over once the testing is completed.

The firefighting project will see the main upgraded to 250mm from the Abbotsford Reservoir through to the bottom of Matthew Street in Waipawa. Alongside this is Stage 5 of the Waipawa Trunk Main Renewal.



### SH2 Borefield Upgrade

Construction of a run to waste system to address turbidity concerns has been completed and a testing and commissioning process is now underway. This work is progressing as a priority to enhance the capacity of the borefield with a filtration treatment system on hold until the run to waste tests have been performed.

A discharge manhole can be found in the river accretion land, operational when high turbidity or murky water is drawn from the bores can be discharged via this manhole to seep back into the gravels until such a time the water runs clear and we have low enough turbidity that we can send the water to the treatment plant at Pukeora Reservoir for treatment and passing through the UV system.

A final issue with an existing pump is being resolved prior to decommissioning of the existing pump system, this is being progressed with the pump supplier.

### Kairakau Water Upgrade

A contract was awarded to Trility in November 2021, and they kicked into gear designing the solution, while local subcontractor Topline Contracting commenced site works in late April. Ground improvement works and installation of underground services is now underway. All the excavation works will be undertaken in the presence of an archaeologist who was monitoring for any artifacts of any items of archaeological interest.

Design of the new Water Treatment Plant is now completed and offsite fabrication will continue through to August 2022 when the treatment building is planned to arrive onsite. Commissioning and operational proven period is planned for September-November 2022.



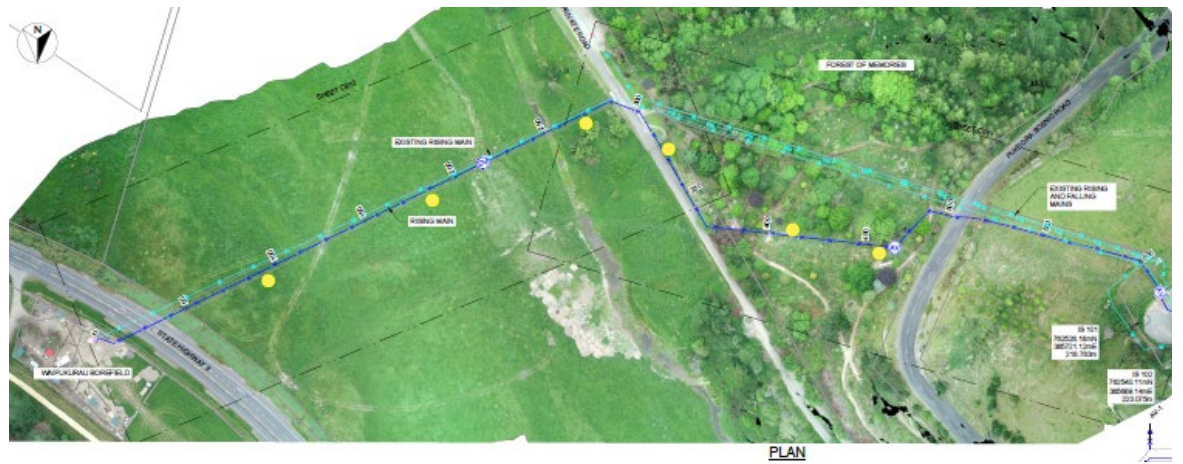
### Reservoir Renewal Programme Abbottsford - Waipawa

Officers are in the early design and landowner negotiation phase of the plan to renew / upgrade the Abbottsford Reservoirs that supply Waipawa and Otane, these are planned to be upgraded from 1100m<sup>3</sup> of water stored to 2800m<sup>3</sup> of water stored as a key project in the LTP, and construction is planned for 2023 all going well. This is progressing, and geotechnical works are planned for the next few months.



### SH2 Borefield to Pukeora Reservoir – Rising Main Replacement

Officers are finalising design to replace the main that feeds the Pukeora Water Treatment Plant and Reservoir that supplies Waipukurau – this main is AC and highlighted as a single source of failure risk. Construction all going well would be late 2022 through to mid 2023.



PLAN



# WASTEWATER

## Wastewater Treatment Operational Performance

Overall compliance in wastewater continues to improve, with 100% compliance at our Porangahau and Takapau sites throughout April and May, and a small number of isolated non-compliances at the remaining sites across the district. An irregular nitrogen result at Te Paerahi WWTP has identified a potential issue at one of our main laboratories. This is currently being investigated and the samples re-tested; the results of which will determine the need for further investigation.

Performance improvements continue across the board as we are now seeing consistent delivery of consent requirements, with isolated non-compliances.

## Waipawa & Waipukurau Wastewater Treatment Plant Improvements

The Wastewater Operations team is pleased to see continuation of the DAF delivery as it has now entered the Commission phase of the project and continues to produce high quality effluent, with results significantly lower than our consented discharge values. The team has been working closely with the delivery team to learn and understand the operation of the DAF in preparation for practical completion in June.

## Wastewater reticulation performance

A number of wastewater overflows occurred throughout the period, with a continuation of the current trending as the frequency of these events is slowly trending upwards. Blockages as a result of root intrusion, fat and foreign material are the common theme. Hawke's Bay Regional Council has been in attendance to a number of these events and is satisfied with the response, both in terms of timing and actions taken. Improvements are to be made in this area as we continue to monitor high risk areas and work towards a programme for inspection and greater levels of service and maintenance.

## Trade Waste Reviews and Improvements

An improvement programme is nearing completion largely supported by a new Trade Waste Bylaw which came into effect on May 13, 2021. Central to this project was the development of a new charging regime that involves Trade Waste inputs paying for capital upgrades proportional to their contribution to waste received at the treatment plant.

The charging regime has had a positive effect on the quality and volume of Trade Waste received by our wastewater treatment plants with cleaner production techniques being implemented by most traders. Monitoring and compliance is having an overhaul with a new, accredited sampling and testing provider and new data collection and display software. Management systems are developing for smaller scale Trade Waste dischargers and as part of this, Grease Trap Management is being improved internally through the environmental health system. New Trade Waste consents have been issued for each Trader with conditions that are more realistic and enforceable. Trader compliance has measurably improved. Implementation of discharge flow metering is under development. This project will be transitioned to operational at the end of this month.

## Inflow and Infiltration Management

Stormwater and wastewater system modelling has provided recommendations informing this programme of work which uses central government funding to identify and remediate wastewater and stormwater defects. This programme of work is underway with manhole repairs, pipe relining, flow monitoring and CCTV. A major contract was awarded to Pipevision for the investigative works. Investigations are complete in Otane, and are underway in Porangahau, Takapau and Waipawa. Remediation is underway in Otane, Porangahau and Takapau and developing for the rest of the district.

## Waipawa, Waipukurau, Otāne Wastewater Upgrade Project

Work is progressing, with significant focus on the DAF, desludging and Otāne to Waipawa project pipeline and other activities. Further detailed below.

### Otāne to Waipawa Pipeline (Stages 1,2 and 3)

The Otāne to Waipawa wastewater pipeline is well underway with all the approximately 9km of pipeline in the ground across Stages 1, 2, 3 and 5. Fulton Hogan are currently working their way along the pipeline installing the final valving details into the already installed chambers as well as the final tie in to the Waipawa WWTP pond where the pipeline crosses the open drain and will go under the WWTP access track. We are currently awaiting the delivery of the final 5 isolation valves for the pipeline. As with the comments below on the Otāne

Pump Station, delay with supply of specialised materials has been a significant risk to the timeliness of the project delivery which has been realised throughout these two projects.

### **Otāne to Waipawa – Pump Station (Stage 4)**

Stead Construction along with subcontractors SCL and Max Tarr are continuing work at the Otāne WWTP on construction of the Pumping station to convey wastewater to Waipawa. Supply of the pumps themselves has been an issue with the Australian manufacturer having delays in their process and now extended shipping delays. The pump supply and related mechanical and electrical installations aside, the majority of the work has been completed with only the installation of a weir plate in one of the pond outlet manholes, screening basket installs and the construction of a small retaining wall to be completed.

### **Waipawa & Waipukurau WWTP Short term Improvements**

The installation of DAF units at the Waipawa WWTP by providing customized and optimized tertiary treatment. This system effectively takes the place of the non-performing lamella clarifiers. With the improved treatment quality post DAF units, it is expected that the UV treatment process will also see an improvement in its efficiency. This work is occurring alongside and to complement the longer-term upgrades.

The installation and commissioning has been completed in the system is currently in its trial or proving period where the discharge is returned to the pond. The system will need to complete the trial without issue and while meeting set effluent quality parameters, prior to being integrated into the live treatment process. Initial effluent quality results are demonstrating that the system is performing well and even exceeding expectations.



### **Waipawa and Waipukurau WWTP Pond desludging**

Hydracare have completed the desludging of the oxidation pond at the Waipawa WWTP with just over 1900 dry tonnes of sludge removed from the pond.

The team have since shifted to the Waipukurau WWTP where they have completed replacement of the geobag bund liner and commenced dredging. Although progress was hampered by a number of obstacles in the pond below the water level, dredging of the pond has been completed with over 1250 dry tonnes removed.

### **Waipukurau and Waipawa WWTP – Pond Waveband Remediation**

Work to remediate the pond bank at the Waipukurau WWTP has been completed with the construction of a rip rap bank (including placement of geotextile fabric, a new concrete nib and placement of rock). Stairs to all sampling locations were also installed to improve operator safety while sampling.

Work has commenced at Waipawa with all of the riprap rock installed, a small section adjacent to the tertiary treatment plant and new DAF unit is going to be constructed as a full concrete waveband extension and should be completed in June.



### **Waipawa Wastewater Resource Consent**

An application to change the existing resource consent conditions of the Waipawa wastewater discharge consent to enable the inclusion of flows from Otāne was lodged with HBRC on the 17th of December 2021. The planning assessment included with the application concluded that this is not anticipated to change the effects of the activity on the environment as assessed in the original consents of December 2006 and that the effects of the proposed changes on the environment are considered less than minor. A s92 request from HBRC was received in February and a response submitted at the start of March, including letters of approval from Te Whatuiapiti and Mataweka maraes. Following this, HBRC has determined that the application will be “non-notified”, we await there S42a report.

### **Takapau Wastewater Upgrade Consenting Project**

The consent for this wastewater upgrade was publicly notified in late 2021. CHBDC is hopeful to have a consent in place within the third quarter of 2022 and commence Stage 1 of the upgrades. Engagement with mana whenua on opportunities for collaboration during the project continues. Updated design scope is the next upcoming milestone for the project.

An information sheet with detail on the project can be found here: <https://www.chbdc.govt.nz/assets/Uploads/Takapau-Wastewater-Community-Information-Sheet-October-2021.pdf>

### **Porangahau and Te Paerahi Wastewater Upgrade Consenting Project**

Public notification of the consent ran from 14 April – 17 May. Seven submissions were received. A [video](#) of the project was produced in collaboration with Ngāti Kere and posted to social media and CHBDC website. Geotech work commenced on 23 May. This project aims to work towards ceasing wastewater discharge into the Porangahau River, using it instead, as a resource. Design scope and procurement remain the next upcoming milestones for the project once consent is in place.

<https://www.chbdc.govt.nz/our-district/projects/the-big-wastewater-story/porangahau-and-te-paerahi-wastewater-system-upgrades/>





# STORMWATER

## Stormwater Operational and Compliance update

We are awaiting a response from Hawkes Bay Regional Council for the Annual Compliance Monitoring Reports, maintaining that result will be favourable given the work that has gone into them. In addition to this, further plans are being developed to meet resource consent requirements. Officers are scoping the development of a Catchment Management Plan with project partners Stantec. The plan will cover aspects over and above the resource consent requirements to provide more value for Stormwater management in the district, coordination of stormwater projects, and impact on the environment for CHB stormwater discharges.

## Stormwater Catchment Management Plan

Central Hawkes Bay District Council is currently commissioning an overarching stormwater catchment management plan which will outline the direction of stormwater management for the district. Working with project partners Stantec we are liaising with internal stakeholders to help capture problem areas, risks, and opportunities for future upgrades. We are aligning this plan with the results of the recent hydraulic modelling work as well as the stormwater improvements outlined in the Long Term Plan. A draft version is scheduled for review in August, with completion planned for September.

## Waipawa/ Otane Stormwater Model

The model build for Waipawa is complete and calibration is underway. Recommendations to service development, future growth, network performance and environmental impacts have been developed. Integration of these within the Catchment Management Plan is underway. Workshopping with key users is planned.

## Waipukurau Stormwater Model

A hydraulic model update is being undertaken by WSP, an initial network walkover was undertaken in December, topological survey of manholes, pipes and open drains has been completed and the model is being built. The hydraulic model will assist in development planning and identifying problem areas. We are also working with HBRC to include lake Whatuma in the scope of this work to give some idea of where development can be undertaken and to increase our understanding of the impact of lake levels after storm events. Integration of the findings of this work within the Catchment Management Plan is underway.

## Nelson Street Stormwater Upgrades

Nelson Street Stormwater project in collaboration with our construction partners Higgins is now 100% complete.

Water runoff is now serviced by new sumps and a network of up to 600mm in diameter concrete pipes that disperse surface water causing flooding issues on Nelson Street in the past. The pipe networks lead to the maxi bubble up sumps on Gaisford Terrace and the stormwater is then collected by mega sumps on the western end of Gaisford Terrace. This project was strategically programmed to be conducted before the Areawide pavement treatment for a tidy finished road surface as part of the road rebuild.





## LAND TRANSPORT

### Summary General

#### Maintenance and Re-seals – Downer

The following reporting is provided based on routine reporting developed in partnership with contracting partner Downer. This reporting is used monthly for Council and contractor asset managers to review planned and completed maintenance and re-seal works.

The Contractor has been working on the regular programme as well as responding to the weather events of March and May.

#### March Storm Response

Work continues around the district re-instating drains, re-shaping metal roads, and clearing debris from the culvert inlets that accumulated during the storm event. This work is a high priority so council can claim as much of the 81% FAR as is possible before the end of June.

#### Reseals

The reseal programme is complete, and sites are being scoped for next year's programme. Crews are being scheduled to do the pre-reseal repairs as sites are approved. This year saw a clear improvement in the planning and execution of the programme which enabled us to complete the work earlier than anticipated.

#### Bridges, Structures and Area Wide Pavement Treatments - Higgins

Work continues on the Nelson Reservoir Streets AWPT with Kerb & Channel being replaced and barring any more weather delays will be complete prior to the end of the fiscal year.

The materials for the handrails for the Matthew Street footpath have been received and installation will be taking place in May. Discussions have been taking place with residents in Otane regarding the next new footpath as to the location. Due to limited room within the road reserve, we are in discussions with the school to get an easement on the edge of their property to construct a full width footpath.

A business case has been prepared for Waka Kotahi for emergency funding for the March 23/24 event and although we have received verbal approval we are still waiting on formal approval within their system. The roads suffered damage district wide, and some were closed during the event, all roads are now open. Clean up continues and some of the repairs will require the installation of retaining structures for which we are ordering materials. Due to COVID impact some of the work will carry forward into the next fiscal. This will be defined over the next month once all the designs and costs are complete.

Due to the focus we are placing on the emergency events work to secure the 81% FAR for as much work as possible some of the planned work programme will be carried forward into the next fiscal.

#### Footpaths

Footpath maintenance and the construction of new footpaths remains a high priority focus area for our communities with steady feedback, questions and requests coming in. Council have an active footpath maintenance and renewal programme with some large sections of footpath due for significant upgrade work in the coming weeks. Councils new footpath construction programme is active with the construction of Matthew St underway. New footpaths are programmed via a prioritisation tool/matrix which is based on criteria set in a Policy of Council. The application of this Policy is being reviewed to ensure it is meeting expectations of both Council and Community.

#### Other Works

Work is progressing on the Single Stage Business Case for Porangahau & Wimbledon roads (old SH 52) with support and input from Regional Waka Kotahi staff

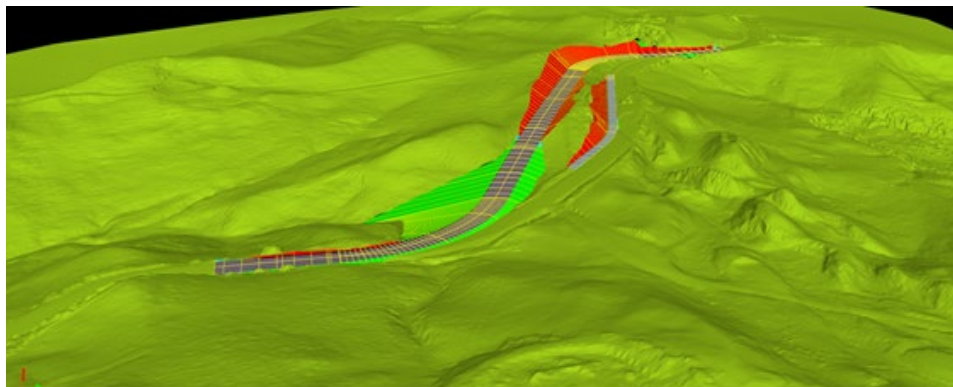
Designs for intersection improvements as identified in our business case are being progressed and put in the drawer ready for construction as budget allows

Work on the Road to Zero (R2Z) project at the intersection of Hatuma, Ngahape, Woburn and Arlington roads is being designed and will be completed this year. This involves enhanced signage and intersection controls to better define give-way rules at the intersection

## Kairakau Road Rebuild – Higgins

The property required to construct the new 2 lane access to Kairakau has been secured and site preparation is beginning with the re-location of the fence, vegetation removal and the construction of silt control devices. This will be followed by earthworks creating a foundation for the new road

Below is the aerial 3D design of the new road layout.



## SOLID WASTE

### Waste Free CHB

#### Waste Diversion

In mid-April, we sent approximately 500 units of e-waste largely consisting of TVs, printers, whiteware, microwaves and assorted appliances to South Waikato for recycling.

15 kg of batteries was diverted from landfill through processing by Upcycling.

### Service Delivery

#### Kerbside Recycling and Refuse Services

Kerbside collections continue uninterrupted.

On average, council receives per week 3 or 4 complaints from ratepayers and these mainly due to missed collection. In the majority of cases, with the use of 3Logix technology, it has been proven that crates will have been brought out after truck has driven past.

Contamination levels from kerbside collections have remained very low and this can only be attributed to the use of open crates and public knowing contaminated items will be 'spotted' by contractor at time of collection and crate/s rejected.

Commencing	Week Ending	Commercial	Contamination
07/02/2022	13/02/2022	3	15
14/02/2022	20/02/2022	10	3
21/02/2022	27/02/2022	8	5
28/02/2022	06/03/2022	6	2
07/03/2022	13/03/2022	6	3
14/03/2022	20/03/2022	9	2
21/03/2022	27/03/2022	6	7
28/03/2022	03/04/2022	0	2
04/04/2022	10/04/2022	0	4
11/04/2022	17/04/2022	0	4
18/04/2022	24/04/2022	0	12

In total 3 621 households have kerbside collection.

### **Drop Off Centres**

Drop Off centres remain fully functional and are still being regularly used. Illegal dumping at Porangahau and Ongaonga remains a concern. Removal of illegal dumping is arranged as soon as it is notified which assists in preventing further dumping.

The rural recycling trailer received positive media attention in the Bay of Plenty. These trailers were largely based on the recycling trailers Central Hawke's Bay District Council and Central Hawke's Bay engineering jointly designed.

### **Waipukurau Transfer Station Weighbridge**

The PMO is currently working through an opportunity to fund a new weighbridge at the Waipukurau transfer station. Funding was approved by the Ministry for the Environment late April 2022. A new weighbridge will allow council to record, and charge based on actual weight of refuse being dumped, provide more accurate kerbside recycling collection data to better understand if we are successful in increasing service participation, and gain a better understanding of diversion of these materials from landfill. The weighbridge is expected to be up and running by September 2022.



### **District Landfill**

#### **Landfill Operations**

New operating procedures are being implemented, to create a smaller working tip face following an updated landfill filling plan. Large sections of the landfill which used to be exposed will now be covered with clay material.



Before

After

A smaller working tip face allows the service providers to manage litter and hazards at the site more efficiently as well as minimising leachate generation and the subsequent costs of disposing and treating of the leachate. With assistance from the Land Transport team, slip material from a nearby slip was repurposed as cover, a win-win for both departments.

### **Leachate to Landfill**

The March storm events has meant that our focus has been to lower the leachate levels in the pond by more tankering than expected. Optimising the leachate spray system to meet the HBRC requirements to irrigate on average 30 – 40m<sup>3</sup> per day across the capped cell remains the focus once pond levels return to normal operating conditions.

## **CONSENTING**

### **Consent application volumes for 1 March – 30 April 2022 reporting period**

#### **Building Consents:**

Total consents: 97  
New dwellings: 21  
Total value: \$18.3M

#### **Resource Consents:**

Total consents: 44  
Number of new lots to be created: 132

The year-on-year numbers below follow on from a period of unprecedented growth for our District with building and resource consenting numbers continuing to increase month on month.

Consent volumes at this time of the year are often skewed by a large volume of applications for freestanding woodfire burners and this year is no exception. Demand for new housing remains high with a 23% increase in new dwelling consents received in this reporting period. Severe supply shortages as a result of COVID continue to impact the industry with many builds on hold awaiting material supply. Product substitutions and partial inspections have increased processing complexity. The impact of upcoming interest rates increases is yet to be seen.

Resource consent applications have increased again this period. Volumes are expected to remain steady however the workload is expected to increase in the short-term as we continue to work our way through the engineering approval stages of several large subdivisions and complexities associated with implementation of the Proposed District Plan.

Compared to the same period last year, resource consent volumes have dropped however volumes were artificially inflated during this period as applicants rushed to submit applications prior to the new Development Contribution Policy becoming effective on 8 May 2021.

The RMA Hearing for the Springhill 312 lot subdivision was heard on 17 and 18 May. The subdivision is a controlled activity under the Operative District Plan and the role of the hearing was to set conditions of consent, not to determine if it is granted or not. We expect to hear back from the Commissioners mid-June. A summary of consenting volumes and value compared with the previous year is provided below.

## March - April 2022

Building Consents	Mar - Apr 2021	Mar - Apr 2022	No. Change	% change
Volume - applications	122	97	-25	-26%
New dwellings - applications	24	31	7	23%
Total value (\$M)	\$13.6	\$18.3	\$4.7	26%
Resource Consents	Mar - Apr 2021	Mar - Apr 2022	No. Change	% change
Volume - applications	79	44	-35	-80%
No. new lots to be created	504	132	-372	-282%

## Resourcing

The continued volume increase in consent applications due to general regional growth and the introduction of the Proposed District Plan has placed further pressure on team resources to deliver.

The requirement for engineering input has escalated as subdivision volumes and infrastructure complexity increases and we continue to rely heavily on the good work within our team as well as our consultant partners, National Processing, Stantec, WSP and The Property Group (TPG), for the provision of building and resource consent processing services and specialist engineering design and construction monitoring input.

The focus on training our three Building Consent Officer Cadets has continued throughout the pandemic. While the reliance on external partners to assist with the high workload remains, our ability to process more consents in-house is increasing and we expect this to continue in the coming months. The introduction of a new online building consents portal in June is expected to further streamline and simplify the process for our customers.



## EMERGENCY MANAGEMENT

### COVID-19 resurgence

#### COVID-19 Community Update

Council staff continue to work alongside Te Taiwhenua O Tamatea, HB District Health Board, Ministry of Social Development and other partners to implement the Tamatea – Central Hawke's Bay COVID-19 Response and Resurgence Plan. An update on the four key objectives is below:

- **Objective 1 Community Intelligence.** We continue to use our collective community intelligence to assist with planning and identifying risks, shortfall and opportunities in our response and where our efforts should be prioritised. Communication and messaging out to the Network of Networks has been strengthened and coordinated.
- **Objective 2 Boosting Vaccinations** – the coordination and collective effort has continued throughout the period of this reporting with the focus turning to booster shots and paediatric vaccination. We continue to work with our partners to provide a range of opportunities and options for residents to access vaccinations using a combined approach of static clinics, the mobile vaccination van and home visiting options for those with limited mobility or ability to attend outreach clinics.
- **Objective 3 Care for our People** – During this reporting period we have seen the Te Taiwhenua O Tamatea COVID welfare hub move to full staffing and they are now firmly focused on providing support to those in need in the community who are affected by COVID-19. We continue to provide support and work closely with the Welfare hub.
- **Objective 4 Escalating Issues for Resolution** – We are in regular contact with key partners such as HB District Health Board and Ministry of Social Development who are leading the clinical and welfare response and have established a local governance leadership group for oversight and escalation of issues for resolution. In this period we have also established the Local Leadership Group in accordance with our response and resurgence plan.

#### CHBDC Internal COVID 19 Response Update

Please refer to Health and Safety overview section on page 37.

### Flood Event

The Emergency Operations Centre (EOC) was stood up early on Thursday 24 March 2022 after significant overnight and morning flooding. Forecasters had warned of heavy rain but it was forecast to impact the northern areas of Hawke's Bay so it was unexpected in Central Hawke's Bay. Overnight the rain caused flooding, road and bridge damage, some services were lost to some of our outlying towns, and a small number of

properties were affected with flooding. Heading into the weekend there was the potential for more rain. The Incident Management Team (IMT), led by Josh Lloyd as the Controller, made plans but happily the path of the rain changed and the IMT was stood down on Friday evening.



## PLACES AND OPEN SPACES

### Places and Spaces for a Thriving Future

The purpose of the Thriving Places and Spaces Programme is to look across all those things we invest in as a community to make sure we are providing the right things in the right places. We are fortunate to have many great examples of our community partnering together that we can continue to build on. This will give us a greater chance of ensuring that everyone living in Central Hawke's Bay is connected and thriving, and every visitor gets to share that sense of belonging and identity.

Over the summer, we sought feedback from the community on our district's places and spaces. We wanted to receive the communities' thoughts on 9 different areas of focus:

- Play
- Sport
- Swimming Pools
- Open Spaces
- Community Halls
- Active Recreation
- Civic facilities
- Arts
- Camping

We undertook targeted engagement in different localities and also sought feedback from the broader community through written surveys online and in the paper. This part of the feedback process closed mid-February 2022, and officers incorporated this feedback into draft strategies and plans that will guide Council's management of, and investment decisions on, its open places, spaces and facilities.

On 5 May 2022 the Strategy and Wellbeing Committee adopted a draft *Central Hawke's Bay Reserves Management Plan* and a draft *Sport and Recreation Network Plan 2022* for public consultation. This consultation is now open until 18 July 2022. Council is seeking feedback from community on the mix of general objectives and policies contained in the documents, and more specific feedback on each of our parks and reserves. For the first time community has the ability to search through all of Council's parks and reserve, and provide feedback on the proposed management approach for these for the future.

### Waipawa Pool

The pool covers are now fully operational but will only be used during the summer months. The installer will return before the season opens to provide training to the lifeguard staff for safe and efficient operation.

High winds lifted one of the learner pool covers which dragged the roller into the pool. The pool operator had a chilly retrieval. Strategies to keep this from happening in the future were discussed, with a plan to fasten down the covers with ropes.

## Waipawa War Memorial Clock Tower



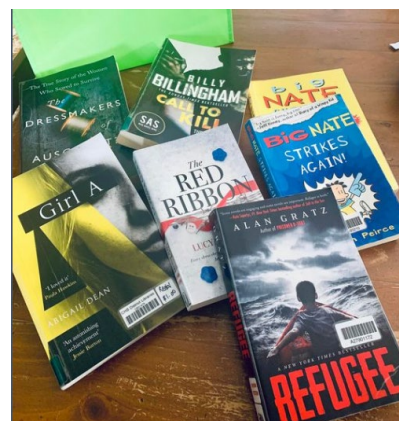
The Clock Shop and local horologist Jim Greef have completed the inner works of the clock tower. It now chimes regularly.

External lights have also been repaired. Some of the base concrete cracks have been filled. Painting of the outside is now underway. Following that the retaining wall and concrete base surface will be repaired.

## Libraries

The Central Hawke's Bay Libraries have embraced the changes that have come since we moved to COVID-19 Orange level. Programmes in both libraries are being held after school and gradually numbers of customers are increasing. This is the general information we are getting from other libraries beyond our region. Our community has not always found it easy with the changes in levels and confidence has not come back over night, but we are noticing that the libraries are busier.

We continue to answer pleas for reading material for families in isolation and we are grateful that we can do this. All members of the library team have been affected in some way by Covid, either personally or due to impacts on staffing levels, and have risen to the challenge.



*Big thanks to the Central Hawke's Bay District Libraries for a virtual delivery during isolation.*

Book Clubs have returned to the libraries with the understanding that when they leave the meeting rooms, they need to wear masks – they are just pleased to be back in the library as a group.

We are working on the final steps of totally removing collection from the old library based on condition or whether they are duplicates. Many are taken to Te Huinga Wai, and some are going to Waipawa. The balance of the collection will be donated to the Lions Club for their big book sale. The libraries have always benefited from these and from this has grown the Libraries Lions Collection of first readers/early chapter books totally supported by the Lions.

The Libraries have fine-tuned the reminder notices process and borrowers can now choose to receive a text message 3 days before their books are due to remind them to renew their books. If books are not renewed by the due date, then Kotui automatically sends a notice by email to all users who have opted for this service to

receive correspondence from the libraries this way. This has reduced the number of notices we have to send by mail by over 90% and we continue to call anyone who is going to receive a notice to ask if they would prefer to receive this by email so further reducing postage.

We have resurrected the Oral History group and have recorded one interview with a local family. Contact has been made with members of the OngaOnga Historical Society – the aim is to introduce them to the resources we have available in the library.

AA has been steady with Driver's Licensing. Road user charges are 36% cheaper until the 21 September 2022, so we are busier than normal processing these. AA transactions/income has increased this year. Students are coming in to get their Real Me verification done, as they look towards applying for universities next year.

We continue to work on updating our processes and guidelines, including creating a 'Welcome to the Library' pack. This welcome pack is in response to the steady number of new library cards being issued each week, and will provide concise information about the collections, facilities, and services offered within our Libraries.

### Outreach Role

The Memory Lane programme which is a programme targeted for those clients at Pakeke who have memory difficulties, has restarted. The first session held in April was showing them old photos of Central Hawke's Bay and seeing if they could name the places. The session held in May, Sharon got an old suitcase filled with items from the CHB museum and showed the clients. The highlight of this session was an article in an old rugby news about the Hawke's Bay rugby team scandal in 1889.

School visits have restarted, with classes of town schools visiting the libraries and librarians visiting schools. We are delighted to have the schools back in the libraries and they are delighted to be back – some more normality for the school children.



On the 24 May the Libraries celebrated National Simultaneous Storytime, where a specified book is read on the same day, preferably at the same time, throughout New Zealand and Australia. Sharon attended Waipawa Primary School and read the story to a participating class. With the change in alert levels, we look forward to being able to resume physical visits to our local schools.



## Workshops and programmes

The below workshops and programmes are currently being run out of Te Huinga Wai:

**Talk Digital-** drop-in digital tech support service.

**Digital Banking** – Digital Banking support run in partnership with CHB Budget Services. This service is starting to pick up pace with 4 people attending sessions in April. Half of the month however the facilitator has been away therefore there were limited sessions offered.



**Growing Great Entrepreneurs Mentor Program** – David Trim is a business mentor who offered this program to those who complete the Growing Great Entrepreneurs program to ensure they continue to be supported following the completion of the program. David is working with approximately 8 businesses at this time, each of these businesses are being provided the support to help them grow and thrive.

**Profit Club** – These sessions are also run by David Trim who runs them in Napier also. They are designed to support businesses with Central Hawke's Bay to thrive and plan for their future. These sessions are offered out of Te Huinga Wai because the space is ideal for providing the digital capability businesses need to grow.

**Digital Boost Support** – We continue to offer support following the Digital Boost project and launch on 1 April 2022. A BA5 offer was held on 12 April 2022 which provided information to local businesses about the support both Digital Boost and Zeald can provide. Off the back of this 6 new businesses have signed up to get a new website and support. We continue to offer workshops and support to our local businesses in the digital space and Te Huinga Wai is offered as a meeting location given the technology that is available for local business to utilise.

A special workshop is scheduled to occur on Wednesday 25 May at the Waipawa Library for those Phase 2 businesses involved in the Digital Boost project. This workshop will offer them personalised support with signing up for a website and will also offer one on one support to those businesses in Phase 1 of the project to ensure they are confident to use their website in the future. Digital Boost and Zeald are supporting these workshops.

#### **He Kura Kainga Role:**

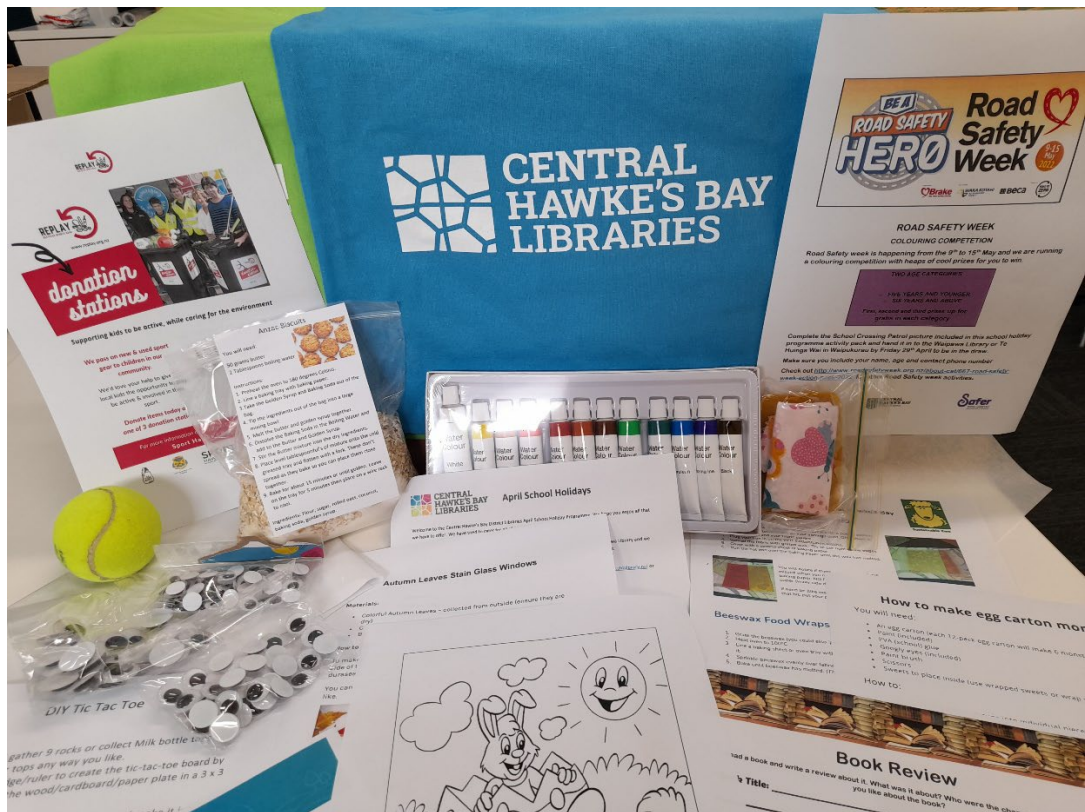
Donna is currently completing the role of He Kura Kainga. She has been working with a local provider to commence a Ranaga programme which commences 27 May 2022. She is also supporting Hogan and the He Taonga Tamata team to run another Ki O Rahi Tournament with local schools in the week leading up to Matariki. Discussions continue with the planning of the 2022 Matariki Celebrations with Te Taiwhenua O Tamatea leading this event and Council supporting it.

#### **General Programming:**

The April School Holiday programme proved to be very popular with over 200 activity packs being handed out to local tamariki. Within the packs were over 18 activities for children to complete at home.

These activities included:

- Make your own Tic tac toe – paint provided
- Cook Anzac Biscuits - all dry ingredients and golden syrup provided.
- Make Egg Carton Monsters - paint and googly eyes provided.
- Create dried leave stain glass windows to celebrate autumn - Clear Duraseal provided.
- Write a letter about your holidays.
- Read a Book and Tell us about it.
- Beeswax wraps. Material, beeswax, baking paper provided.
- Easter Colouring in.
- Make a poppy and bring it into the library. Red card and template provided.
- Replay! Get out, Get active. Get active Bingo sheet, tennis ball and chalk provided.
- Road Safety Colouring in Competition & Activity Sheet.



A further 100 packs were made up and provided to the COVID Welfare Hub to be provided to those isolating at home. This reinforced our strong partnership with our local coordinators who came and assisted with putting the packs together.



Activities were also offered within the library or in the Parks with these being Crafternoons, Digitplay, Waka Takāro and Beeswax Wraps with Neen from Sustainable Ewe. There were over 50 children attend at least one of these sessions offered.

## April School Holiday Programme

Pop in and Grab an Activity Pack or participate in one of our free programmes!



	Monday	Tuesday	Wednesday	Thursday	Friday
<b>Week One</b> 18 – 22 April	 <b>EASTER MONDAY</b> Waipawa Library & Te Huinga Wai CLOSED	 <b>Crafter-mornings</b> 10.30 – 11.30am Waipawa Library	 <b>Waka Takaro</b> <b>Play Trailer Fun</b> 10.30am-11.30am Nelly Jull Park	 <b>Digi Play</b> 10.30 - 11.30am Te Huinga Wai, Waipukurau	 <b>Beeswax Wraps with Neen</b> 10.30 - 11.30am Waipawa Library
<b>Week Two</b> 25 – 29 April	 <b>ANZAC DAY</b> Waipawa Library & Te Huinga Wai CLOSED	 <b>Crafter-mornings</b> 10.30 – 11.30am Te Huinga Wai, Waipukurau	 <b>Waka Takaro</b> <b>Play Trailer Fun</b> 12.30-2pm Russell Park, Waipukurau	 <b>Digi Play</b> 10.30-11.30am Waipawa Library	 <b>Beeswax Wraps with Neen</b> 10.30 - 11.30am Te Huinga Wai Waipukurau

For more information please visit [www.chblibrary.nz](http://www.chblibrary.nz) or our Facebook Page @CentralHawkesBayDistrictLibraries  
The Knowledge and Learning Hub – Te Huinga Wai, 4 Bogle Brothers Esplanade, Waipukurau, (06) 858 9154  
Waipawa Library, 64 High Street, Waipawa (06) 857 8123



**Crafternoons** – The Libraries continue with weekly crafternoon sessions. These sessions provide a fun and creative space for children to create our weekly crafts. Activities such as create your own hacky sack, craft with autumn leaves and decorate a poppy are some of the activities offered.

**DigiPlay** – This programme provides our tamariki with the opportunity to have a go on something they may not have access to at home such as Play Station, iPads, VR and much more. These sessions operate from 3.30-4.30pm, giving kids a safe space after school in both.

**Preserve Your Past** – The library team are running Preserve Your Past every second week at the Waipawa Library. During these sessions community members are invited to bring in any documents or photos that they would like digitised and staff assist them with this. They are offered the option of sharing any of these items on the CHB Libraries' Recollect site <https://chbheritage.recollect.co.nz>

## Streets for People

Central Hawke's Bay District Council are working with Waka Kotahi NZ Transport Agency and the Waipawa community to develop local solutions to improve the safety and connectivity of the main street of Waipawa.

The council has gained funding and support for planning and scoping projects as part of the Streets for People programme, which builds on the Innovating Streets programme established by Waka Kotahi in 2019.

The programme aims to make it easier to create safer, healthier and more people-friendly streets, so people can get to where they are going safely. It also helps to reduce emissions and improve physical, mental and community wellbeing by making it easier for people to walk, bike or scoot to the shops, school or work.

For Waipawa, this will include planning to reduce traffic speeds through town and give people moving around the town centre safe and easy access to both east and west sides of the main street. Officers will continue to work over the next few months to build capability within our team, and will also engage with community in the next few weeks to discuss high-level plans and intervention proposals.



## HEALTH AND SAFETY OVERVIEW

The continuing dynamic situation around COVID-19 has seen the H&S Advisor supporting the Council to respond to the pandemic.

### COVID-19 Response (Internal)

#### Role based COVID-19 Risk Assessments + Vaccination Policy (for staff)

The Councils' vaccination policy was updated in April 2022 to reflect 'strongly encouraged' vs mandated Covid-19 vaccinations following NZ Government decision to amend mandates on vaccinations.

#### Ventilation – Air Purifiers

As COVID-19 is known to easily spread between people in the air, improving the ventilation in enclosed spaces is a key and effective measure to reduce the risk of spread. Council continue to use air purifiers in Council meeting rooms and public spaces such as libraries.

#### Masks - P2 respirators and 'Fit Testing' for respirators.

Council continue to provide P2 and standard surgical grade masks to staff.

#### Perspex Screens

Perspex screens have been installed at Council's main reception in Waipawa and both libraries. The screens further support the public health measure of physical distancing.

#### Rapid Antigen Tests (RATs)

Council's RAT Assurance Programme continues to operate with full participation by Council's 3 Waters Team and a total of 43 other staff. Participation remains voluntary, with staff committing to 3 RAT tests per week, logging results in mycovidrecord and advising Council if a positive result is received.

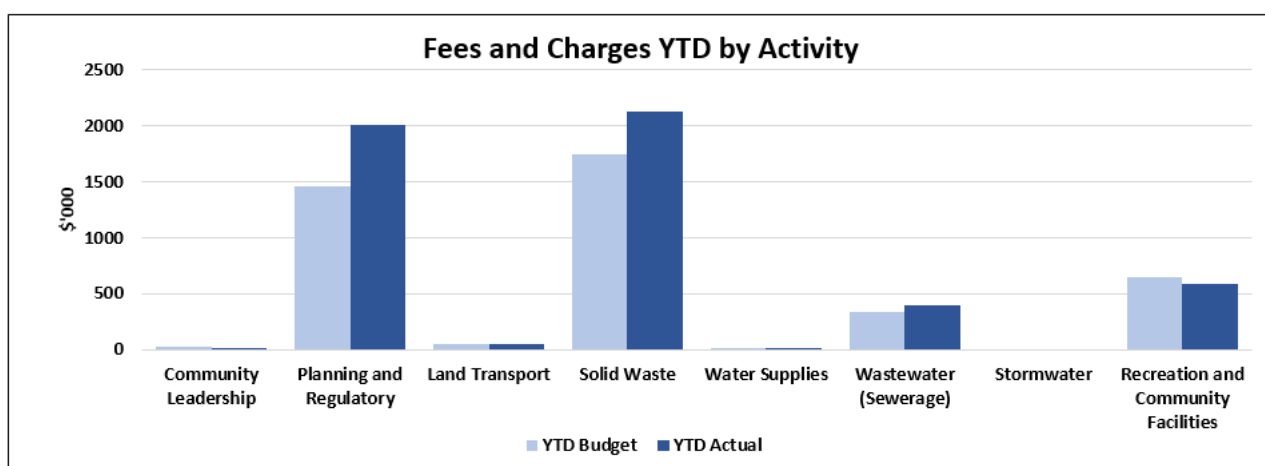
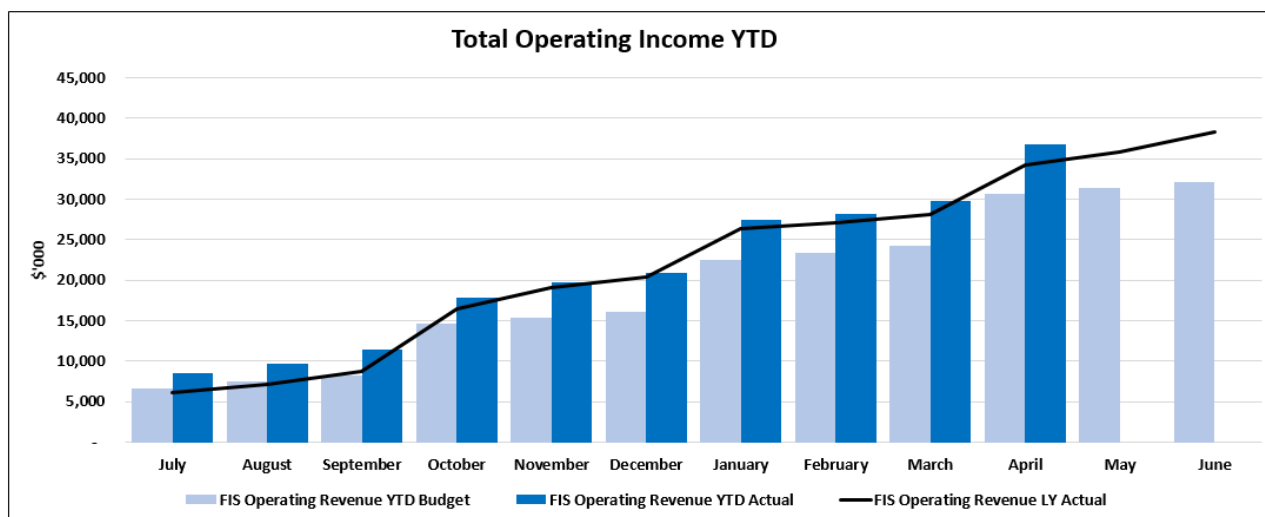
# Financial

## Performance

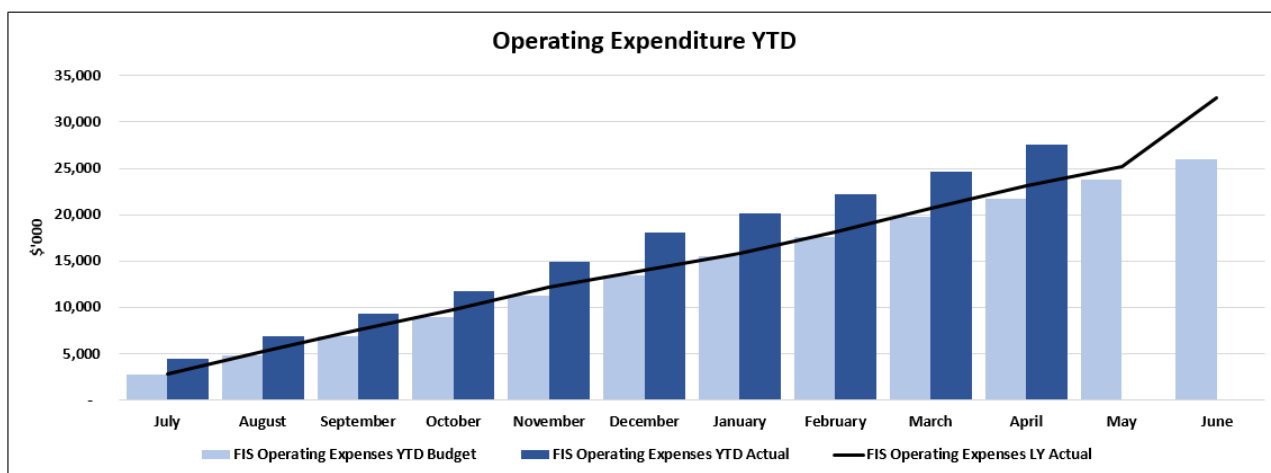
### FINANCIAL PERFORMANCE ENDING 30 APRIL 2022

The graphs and tables below show the financial results for Council covering the financial results for the 10 months ended 30 April 2022.

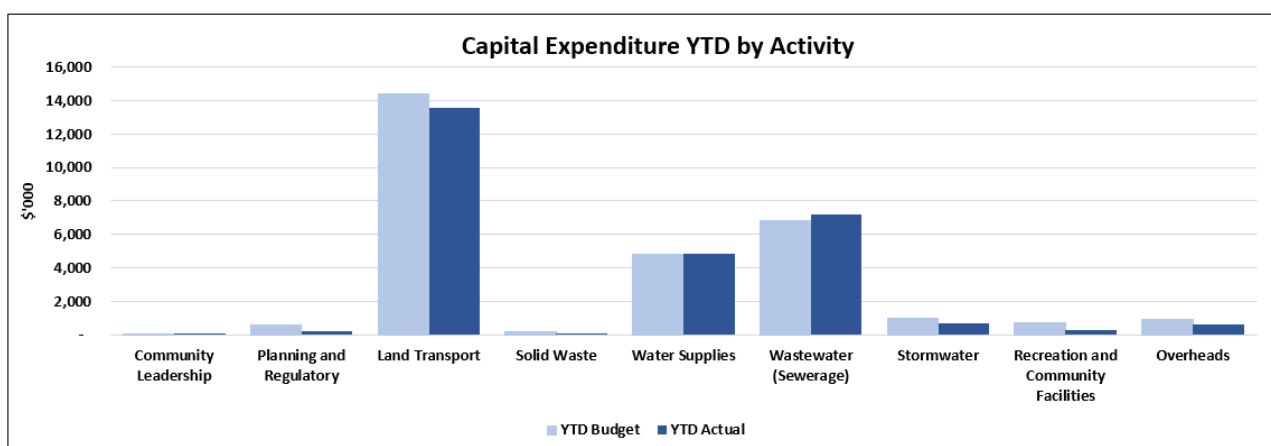
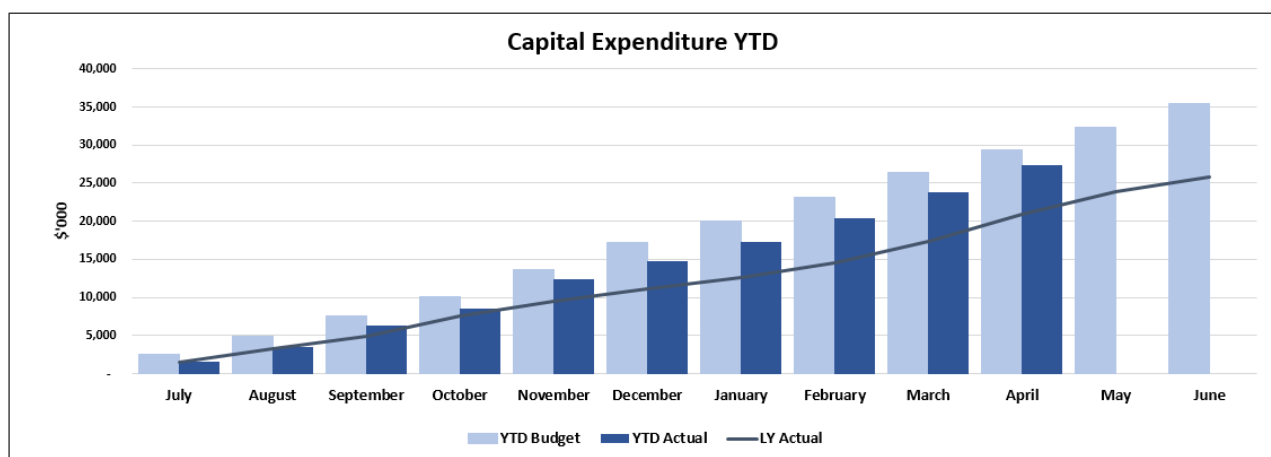
Council is now over three quarters through its financial year, and Council is starting to see where it is likely to land financially at year end. The July revenue includes a reversal of \$3.7m of revenue in advance booked at year end (grants received pre-July 2021 but not spent at that point in time) which slightly distorts the figures (both revenue and expenditure). Consenting is still running ahead of budgets. Solid waste is distorted by Council processing internal charges for the disposal of the sludge being removed from the wastewater ponds.



The operating expenses look high compared to budget, but this is due to Council spending grants received (tranche one 3 Waters and COVID Economic Recovery projects), additional costs of consent processing and consent consultancy costs (includes some design work that will be covered by future developer agreement income), additional volume through our landfill (carbon credits in particular) and the start-up costs of the new extended recycling services.



Capital spend is running behind budget, predominately in land transport – but less so than in previous reports. This is because the costs relating to the March weather event clean-up and the Kairakau Road slip are beginning to come through. Given that the contractors doing this weather related work are the same contractors who do Council's planned maintenance, we are having to delay some planned work.



# # the BIG. Waste Water Story

# # the BIG. Water Story

**#TheBigWaterStory** programme of work, and the **Waipukurau Second Supply** received a decision in May 2022. With formal landowner agreements well progressed, most pipeline and reservoir due diligence complete. A consent onhold for geotechnical investigations either side of the river, options assessed for crossing the rivers. The production bore drilled and test, and replacement of the AC main out of the bore-field (tagged as Stage 1) is complete. Stage 2 and 3 is well underway with approx. 2.4km complete. The next stage for this project is committing to an option to take further into construction.

Alongside the Waipawa and Waipukurau project upgrades – works are commencing on planning for upgrades of the future reservoir upgrades and replacement – with the Waipawa reservoirs proposed to be replaced and upgraded first. Landowner negotiations and design for these progressing well.

**Significant mains upgrades** are in place across Tikokino and Abbotsford Roads as part of the firefighting and Waipawa to Waipukurau Water Supply project. Procurement to commence shortly on the next renewals planned for Porangahau and Racecourse Roads.

The **Kairakau Water Supply Upgrade** is progressing with the award occurring in November 2021 and all ontrack for offsite fabrication in April 2022, and onsite installation from June 2022, aiming for completion by November 2022.

The wastewater **renewal programme** is also kicking into gear with design nearing completion for Racecourse and Porangahau Road in Waipukurau, and the project in tender with works to start in July 2022.

The **SH2 Borefield Upgrade** is making good progress with the trial commissioning of the new system progressing well.

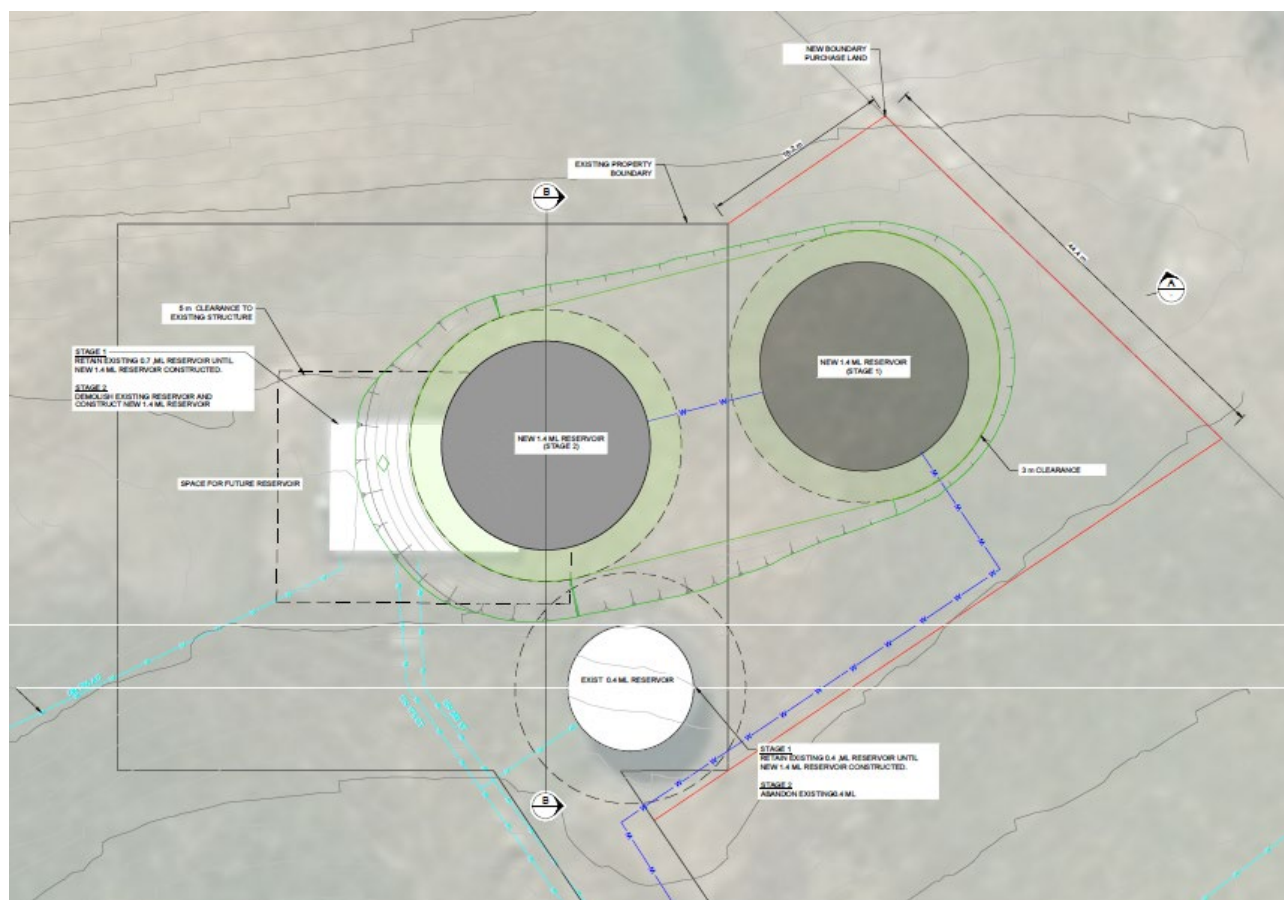


Figure 1: Outline of the reservoir replacement in Waipawa

**#TheBigWastewaterStory** programme has advanced over the last few months, with Stage Two of the Otane to Waipawa Wastewater Pipeline nearing completion. Stage Three is complete - linking the end of Stage 1 works at Racecourse Road/White Road to the Ōtāne Treatment Plant. The Ōtāne pump station is underway and construction of Stage 5 underway awaiting some key valves to complete – expected in June 2022.



*Figure 2: Otane Pump Station – awaiting pumps and pipework*

**Waveband repairs** at the Waipukurau wastewater plant are complete and Waipawa repairs now underway

**Desludging** works have been completed at the Waipawa wastewater plant and works are underway at Waipukurau through May 2022. The **Waipawa DAF** build is in full swing and on track for commissioning in March 2022. A tender is currently being evaluated to install a new bridge crossing the drain at the Waipawa wastewater plant.



*Figure 3: DAF in place*

## TRANCHE ONE – 3 WATERS REFORM PROGRAMME

Council identified a number of projects as part of the 3 Waters reform programme tranche one – below is a brief update on the programme –



Proudly Supported by  
**New Zealand Government**  
Te Kāwanatanga o Aotearoa

Officers are due to submit Q6 report in April 2022, to date just over \$9.9 of our \$11.09m has been spent and all of our projects within the programme are committed and planned to be delivered within timeframes. Due to COVID-19 DIA has allowed an extension to June 2022.

1. **Regional 3 Waters** – work is underway with other councils to identify and understand private water supplies, as part of a private water supply identification regional project, which may include a contingency fund to assist private water supplies – another project in planning is to investigate work required to synergise a regional engineering code of practice to assist our supply partners working in Hawke's Bay.
2. **Water Safety Planning** – source protection mapping and catchment risk assessment work is underway to support our water safety plans. A Sustainable Water Management Plan has been developed and [can be viewed here](#).
3. **Otane to Waipawa Pipeline Stage 2** – the pipeline is well underway as documented above with 8.7 of the 8.8km pipeline installed and we are now progressing into Stage 5.
4. **Waipukurau Second Water Supply** – Borefield is complete and Tikokino Road Stage 1 pipe replacement is complete, Stage 2 and 3 underway, design well progressed – future decisions to be made about the project.
5. **Wastewater Treatment Improvements** – DAF system install underway, expected commissioning underway through May 2022
6. **Wastewater Desludging** – Dry solids removal complete at Waipawa and Waipukurau, desludge complete at Waipawa, Waipukurau desludge nearing completion
7. **Bylaw Reviews** – Updated bylaws were adopted on May 13 2021, work is underway on implementing the changes
8. **Trade Waste** – Trade Waste consents underway and issued in Dec 2021, ongoing engagement
9. **Water Renewals** – a project to renew water mains is complete in Waipukurau across Nelson and Reservoir roads – A stormwater upgrade is now underway. Another renewal project is underway on Tikokino and Abbottsford Roads in Waipawa.
10. **Wastewater Renewals** – this fund is focussed on expediting our I&I programme, starting with physical works in Otane and studies in other towns – these studies are now underway.
11. **Programme Management** - a new project management software is now live and supporting the programme, and a 3 waters monitoring and wider infrastructure consent management tool is being rolled out to support operational compliance and visibility.
12. **Kairakau Water Upgrade** - \$300k was reallocated to increase the budget and scope for Kairakau water upgrade, these works are well underway.



Figure 4: Dredge on the Waipukurau wastewater pond

## PGF ROADING PROGRAMME – PŌRANGAHAU TO WIMBLEDON

PHASE	DESIGN/ BUILD	
TIMELINE	JAN 2020 START DATE	AUGUST 2022 END DATE
PROGRESS	75%	
BUDGET	Total Budget \$20.1m Spend to Date: \$14.77	
RISKS		

### Scope

To upgrade Pōrangahau and Wimbledon Roads to improve safety and resilience along Pōrangahau Road from Waipukurau to the Tararua border on Wimbledon Road.

### The Contractor

Stantec and Council have been delivering the design, procurement and contractor supervision of this significant programme of work.

We now have four different contractors onboard to deliver the main components of this programme, Concrete Structures, Fulton Hogan, Downer and Russell Roads.

Funded through the PGF by MBIE – the programme is well underway, and we can expect to see significant construction through to completion in August 2022.

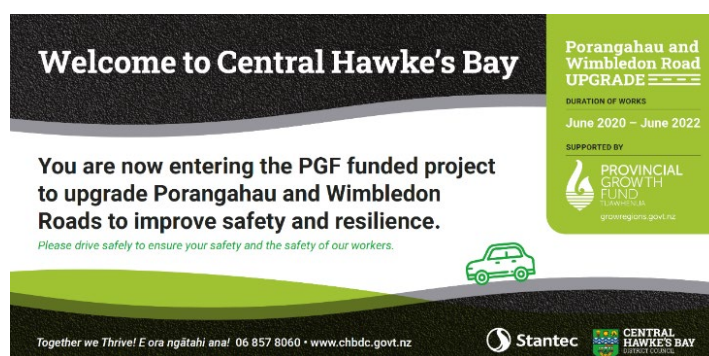
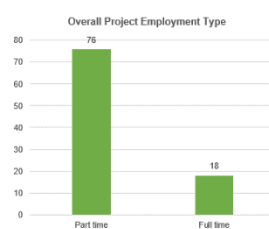
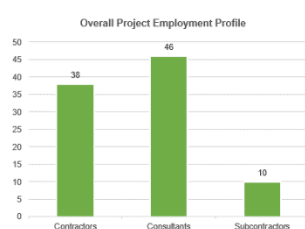
### Communications

An interactive map has been created and can be visited here:

[https://experience.arcgis.com/experience/947a211cafb4a96a063fcd1e8d3a461/page/page\\_10/](https://experience.arcgis.com/experience/947a211cafb4a96a063fcd1e8d3a461/page/page_10/)

Webpages for the programme and individual projects can be found here: <https://www.chbdc.govt.nz/our-district/projects/porangahau-wimbledon-road-upgrade/>

### Employment Statistics to Date



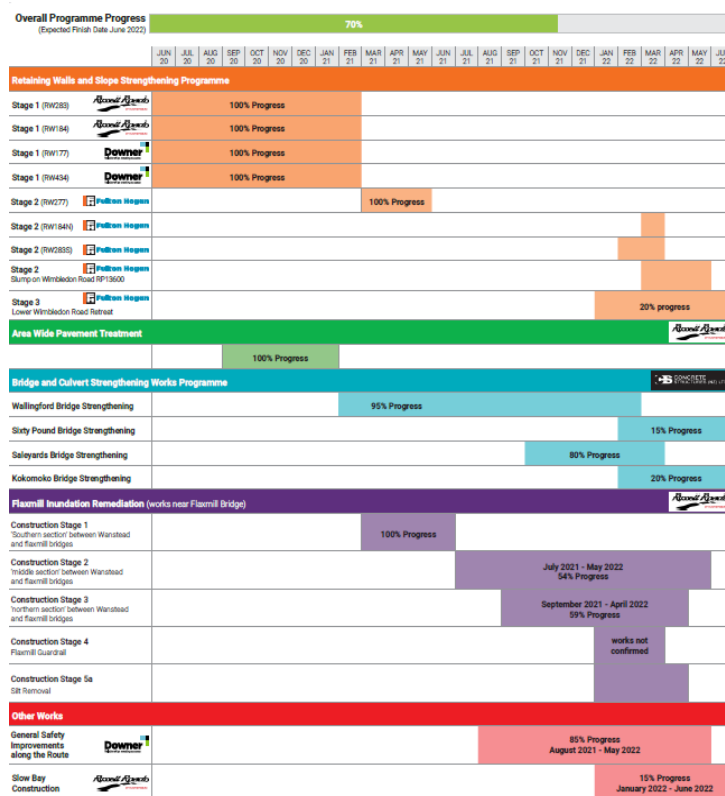
### Progress Update

2022 has seen the programme ramp into action, with a significant amount of construction underway across the programme.

- 3 bridge sites are under construction
- 2 sites at Flaxmill/ Wanstead, with consent granted.
- Lower Wimbledon Retreat underway and 3 other retaining wall sites to commence
- Slow Vehicle Bay and Safety Improvements progressing.

The programme was impacted by the March 2022 rain event with rising river levels impacting works and causing some delays and clean up as waters and debris impacted under construction projects.

This has caused some pressure on the programme, and Kanoa/ PGF have granted an extension to 30 August 2022 to complete the program



**Figure 5: Lower Wimbledon Retreat**



**C1168 – Slow Vehicle Bay: Subbase works complete. Basecourse laid, compacted, and milled in preparation for cement stabilising.**



**Figure 6: Flaxmill Bridge clearing**



C1097 – Flaxmill Inundation Remediation Project (SP2): Edge marker posts installed, and farm access completed.



C1097 – Flaxmill Inundation Remediation Project (SP3): Basecourse testing, chipsealing and set out for road marking completed, guardrail installation and line marking commenced.



## DISTRICT PLAN REVIEW

PHASE	Hearings underway	💡 📋 ✎ ⚙️ ✓
TIMELINE	AUG 2012 START DATE	March 2022 HEARINGS BEGIN
PROGRESS	80%	<div><div></div><div></div><div></div><div></div><div></div><div></div><div></div><div></div><div></div><div></div></div>
BUDGET	Total Budget \$3.5m Spend to Date: 2.3m	<div><div></div><div></div><div>✓</div></div>
RISKS		<div><div></div><div>✓</div><div></div></div>



### Scope

The review has now progressed to the phase of undertaking the formal Resource Management Act statutory hearings. Submitters to the District Plan Review have the opportunity to formally submit their views on the topics contained within their written submissions to a Panel of Commissioners appointed by Council.

### Progress Update






The first two hearings for the District Plan Review were undertaken in March and April. The topics covered were the Natural and Coastal Environment (hearing 1) and the Urban Environment, Sustainability, and General District Wide Matters (hearing 2).

The third hearing will take place from 15-17 June 2022 in Council Chambers, where submitters will be invited to talk to their submissions on sections and provisions in the plan pertaining to the Rural Environment.

It is anticipated that hearings will be completed before the end of the year. Following the hearings, the Panel will make decisions and recommend a new District Plan for Council to adopt in the first half of 2023.

Following each hearing the Panel releases a memorandum covering post- hearing activities to be undertaken by Council's reporting officers, experts and or submitters, to further inform the Panel's deliberations and decisions

# POUND PROJECT

PHASE	DESIGN	    
TIMELINE	JUN 2018 START DATE	DECMEBER 2022 END DATE
PROGRESS	10%	<div><div></div><div></div><div></div><div></div><div></div><div></div><div></div><div></div><div></div><div></div></div>
BUDGET	\$700k TOTAL PROJECT	<div><div></div><div></div><div></div><div></div><div></div><div></div><div></div><div></div><div></div><div></div></div>
RISKS		<div><div></div><div></div><div></div><div></div><div></div><div></div><div></div><div></div><div></div><div></div></div>



## Scope

To build a purpose-built Pound Facility for Central Hawke's Bay that meets:

- Ministry for Primary Industry (MPI) standards and;
- The needs of the community now and into the future.

## Progress Update

Detailed design has been completed and approved. Building consent was submitted mid-April and is currently being processed.

A further update on timeframes will be able to be provided once the building consent has been approved and procurement process has been completed.

The Customer Relationships and Experience Manager is continuing to manage the relationship with the SPCA in the interim.