

# #theBIG Waste Water Story

## Programme Update

Despite the significant challenges and cyclone recovery efforts over the past year, Central Hawke's Bay District Council has remained focused on delivering the five key priority areas identified in its Long Term Plan 2021-2031 'Facing the Facts' to support smart district growth and proud, prosperous communities.

The following update highlights Council's major investment and renewals in the district's wastewater network #thebigwastewaterstory over the past three years across its six managed wastewater schemes.

We welcome your questions and feedback: please email us at [customerservice@chbdc.govt.nz](mailto:customerservice@chbdc.govt.nz)

Want to learn more? Scan the QR code to find out more about what we've been doing to improve the management of wastewater in our district.



## Highlights over the past three years

**5.9 km**  
OF WASTEWATER PIPE INSTALLED OR REPLACED

**1,640**  
PROPERTIES INVESTIGATED FOR LEAKS AND DEFECTS

**21 km**  
OF PIPE

**Over \$14 million**  
INVESTED IN OUR WASTEWATER NETWORK (COMBINATION OF RATES AND OTHER FUNDING)

Project	Status	Start date	End date	Cost
<b>1</b> Otāne to Waipawa Wastewater Programme 4 pipelines (9 kms); 1 pump station	Complete	June 2020	August 2022	\$5.8 million (\$3.4 million from rates)
<b>2</b> Waipawa WWTP Upgrade New dissolved air flotation (DAF)	Complete	July 2021	August 2022	\$1 million
<b>3</b> Desludging of Waipawa WWTP 1,905 tDs (tonnes of dry solids) removed	Complete	Sept 2021	Dec 2021	\$2.3 million
<b>4</b> Desludging of Waipukurau WWTP 1,506 tDs (tonnes of dry solids) removed	Complete	Jan 2022	May 2022	
<b>5</b> Takapau Wastewater System Upgrade Consent Land-based irrigation; UV filtration; storage pond	Consent granted	Oct 2022	To be rolled out over 6-year period	\$1.7 million spend to date
<b>6</b> Pōrangahau Upgrades Rongomaraeroa Funding	Consent application	Aug 2021	Due to be completed 2034	\$1.8 million spend to date
<b>7</b> Inflow & Infiltration Investigations 1,640 properties; 21 kms of pipe	Ongoing	2021	Ongoing	\$665,000 spend to date

APPROX % OF TOWNSHIPS INVESTIGATED

**47%**

WAIPAWA

**97%**

OTĀNE

**26%**

WAIPUKURAU

**85%**

TAKAPAU

**98%**

PŌRANGAHAU

**98%**

## Project Spotlights

### Removal of wastewater discharge into the Papanui Basin

This project marked the start of Council's District Wastewater Strategy 2020 to centralise treatment and remove all treated wastewater from waterways.

#### Otāne to Waipawa Wastewater Programme

The environmental milestone saw Otāne's wastewater discharge permanently removed from the Papanui Stream and a new pipeline transporting Otāne's wastewater to the Waipawa wastewater treatment plant (WWTP)

fully operational. Partially treated wastewater has now been conveyed from Otāne WWTP to Waipawa WWTP for further treatment and discharge, removing all discharge at Otāne from the Papanui catchment.



### Waipawa & Waipukurau treatment upgrades



#### Waipawa Dissolved Air Flotation (DAF)

The installation of a DAF unit at Waipawa WWTP has significantly boosted the efficiency of the treatment process through a greater ability to remove contaminants from the wastewater, process greater volumes and comply with discharge consents.

Performance testing throughout 2023 (a year after installation) has shown the unit is meeting all expectations and requirements. Ongoing optimisation will be part of normal operations at WWTP.

#### Desludging

Council's efforts to desludge and remove dry solids from Waipukurau and Waipawa's WWTPs have contributed to overall better outcomes for the network by improving operational performance; restoring treatment capacity; improving compliance with discharge consent requirements; and lessening the dependence on operator input.

## Challenges

The cyclone has only reinforced the importance of continuing to invest in our wastewater network and improve network resilience.

This will need to be carefully managed with affordability for our ratepayers, delays to the Affordable Water Reforms Programme impacting our debt levels and ongoing recovery post-Cyclone Gabrielle. Future wastewater projects will need to be rephased and both the capital investment and ongoing capability of the plants carefully managed for years to come.



### Consent to upgrade Takapau's wastewater system

In October 2022, consent was granted to transition Takapau to a land-based wastewater system, a long-term, environmentally responsible approach that will remove treated wastewater from the Makaretu River and irrigate it to land, allowing time for soil absorption and plant growth.

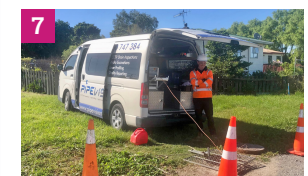
The planned upgrade will include UV filtration; an irrigation system installed at the new site; a new additional storage pond to increase capacity; and expansion of the irrigation area.



### Pōrangahau upgrades/ Rongomaraeroa funding

The Pōrangahau and Te Paerahi WWTPs' consents expired in 2021 and included conditions that Council remove the Te Paerahi WWTP and discharge from its current site, while ceasing to discharge into the Pōrangahau River. Consultation with mana whenua and the community over the past six years supports a desire for a new system. Following the adoption of the Long-Term Plan, Council lodged its resource consent application with Hawke's Bay Regional Council in August 2021.

This project is also facing delays as a result of Cyclone Gabrielle.



### Inflow & infiltration

#### Detecting where stormwater/groundwater is entering the network

Council has taken proactive measures to identify potential issues with the performance of the district's wastewater network, including inspecting private properties for possible causes of inflow or infiltration using CCTV cameras to identify leaking pipes and network defects; and fixing issues causing overflow. Long term, we aim to use investigation results to ease the load on our WWTPs by reducing inflow and infiltration in the community.