



**CENTRAL
HAWKE'S BAY**
DISTRICT COUNCIL



Together we thrive!

Chief Executive's Report
Central Hawke's Bay District Council

June - July 2022

Together we Thrive! E ora ngātahi ana!



Our Strategic Direction

Together we Thrive!

Our vision for Central Hawke's Bay is a proud and prosperous district made up of strong communities and connected people who respect and protect our environment and celebrate our beautiful part of New Zealand.

What we know - Our DNA -



WORKING TOGETHER

Central Hawke's Bay will be stronger when we work together. Partnerships and collaboration are at the core of everything we do.



CUSTOMER EXCELLENCE

The communities we serve are our customers. They are at the heart of our decisions, interactions and communication. We'll engage with our customers to deliver value and exceed expectations.



PLANNING FOR TOMORROW

We will act with purpose, and think with a long-term lens to make sure our actions future-proof Central Hawke's Bay.



THINKING SMARTER

We need to think smarter and better in everything we do. With a culture of innovation and continuous improvement we will add value to our communities.

What we stand for - Our Values -



Our values capture who we are and what matters most to us. They are the attitudes we embrace as individuals, teams and as a whole organisation. We are all personally responsible for acting with these in mind.

- T TRUST** - We create trust by acting with integrity.
- H HONESTY** - We do what is right even when no one is looking.
- R RESPECT** - We have respect for each other, our community and our stakeholders.
- I INNOVATION** - We find smarter ways to produce improved and sustainable results.
- V VALUING PEOPLE** - We are one team, supporting each other to succeed.
- E EXCELLENCE** - We deliver exceptional results.

What we're most proud of - Our Greatest Asset -

People are our greatest asset. At Central Hawke's Bay District Council we are committed to providing a safe and great place to work that values diversity and inclusion, and develops skilled people who can lead our community to thrive.



Why we do what we do - Our Purpose -

It's our goal to create an environment that supports a thriving Central Hawke's Bay district, by providing efficient and appropriate infrastructure, services and regulatory functions.



The outcomes we want to achieve - Our Objectives -



- A proud district.
- A prosperous district.
- Strong communities.
- Connected citizens.
- Smart growth.
- Environmentally responsible.
- Durable infrastructure.

How we'll reach our outcomes - Our Focus -



- Promoting smart growth.
- Attracting and enabling business success.
- Strengthening our district and community identity.
- Protecting and promoting our unique landscape.
- Planning for tomorrow to future-proof Central Hawke's Bay.



E ORA NGĀTAHI ANA – TOGETHER WE THRIVE.

KIA ORA KOUTOU FROM THE CHIEF EXECUTIVE

This report provides an update of the organisation's activity over the June - July 2022 and provides a snapshot of some of the organisation's achievements and activity over the period.

The reporting period has been a productive one, with a wide range and number of activities and projects underway across the business.

Nga Ara Tipuna launch



Three Waters Reform

In our last report, I noted that we were waiting to see the introduction of the Waters Services Entities Bill 2022 introduced into Parliament. Since that time, not only has the Bill has been introduced, but consultation on the Bill has also closed on 22 July. Council adopted its submission at the Strategy and Wellbeing Committee on 7 July.

Council have been firm in their submission that they do not support the Bill in its current format, with serious concerns to community democracy, local voice and accountability. Councils submission, supports the wider submissions made by Taituara, Local Government New Zealand and Communities 4 Local Democracy, that also support the key aspects of Councils submissions.

Further legislation on the three waters reform programme is expected to be introduced into the House in October, with the Water Services Entities Bill expected to be confirmed by Cabinet in November.

The wider work programme on three waters reform continues to gain momentum, with staff involved in a number of associated forums and workshops. We can expect the pace of the reform programme to continue to pick up as the National Transition Unit continue to become further resourced.

Brad Olsen Business Breakfast

A further highlight in the period was the Brad Olsen Business Breakfast on 15 July. With over 100 community members in attendance, Brad shared a story about the success of the Hawke's Bay economy, with the region having the strongest performing regional economy post COVID-19.



The takeaway message, was while there is some short term challenge ahead, the future for Central Hawke's Bay remains positive. The next Central Hawke's Bay Business Breakfast is planned for November.

Ngā mihi

Doug Tate
Chief Executive

Activity

Updates

SOCIAL AND ECONOMIC DEVELOPMENT



Safer Central Hawke's Bay

The coalition group have met twice during this reporting period and during this period have reviewed and set the Safer CHB goals for the 2022/2023 year. These goals complement the goals that have previously been developed by the four workstreams of the Safer Central Hawke's Bay network.

Following the formal winding up of the Safe Communities Foundation of New Zealand, a working group has been established to develop an effective and sustainable community-led mode for the new Aotearoa Safe Community network. SHORE and Whariki Research Centre have completed a feasibility study which will be released to all Safe Community networks early August.

The Safe and Healthy Homes workstream are once again in the regional Jammies for June campaign, with dozens of pairs of winter pyjamas currently being distributed out to families in our Partnering with our Network of Networks this annual campaign is a to support families in our district while also bringing delight and joy who receive their gift. Alongside the pyjamas we have been able to knitted garments, draught stoppers and other winter garments to thanks to the support of partner agencies.



participating children's community. practical way to children also offer families

Violence Free CHB, the Safer Central Hawke's Bay workstream family harm prevention is currently planning a range of events and activities for White Ribbon month in November. The network has received funding of \$3000 from the Waipukurau Rotary club and this will be used to support the work of the network including the purchase of two more "It's Not OK" large billboards to add to the three that are already displayed in the district. Elder Abuse and Neglect is an identified priority of this network and we supported the promotion of Elder Abuse and Neglect week held during June and led by Age Concern.

The Community Resilience and Wellbeing network are delighted to be bringing the successful Mates4Life programme to Central Hawke's Bay with three of our larger employers, including Central Hawkes' Bay District Council, participating in the first round of training to be provided in Central Hawke's Bay. Mates4Life Hawke's Bay is a suicide awareness and prevention programme being delivered to workplaces and organisations across Hawke's Bay (Wairoa to Dannevirke). The aim is to provide a long-term, sustainable, no barriers suicide awareness and prevention training approach that is specific to the needs of workplaces and communities. Other local employers will be offered the opportunity to participate in the programme once training of the initial cohort has been completed, with the aim of integrating this programme and the support it offers in to as many Central Hawke's Bay businesses as possible over time.

Central Hawke's Bay Older Persons Network

The network has met twice during this reporting period.

The network supported the annual Elder Abuse and Neglect Awareness week led by Age Concern. A range of events including public displays, Cuppa with a Cop and training sessions for professionals were held to assist with raising awareness of the range of abuse that is being experienced by older people as well as providing information and pathways for professionals and whanau to access support for any older person they feel may be experiencing abuse or neglect.

The network also hosted a workshop designed to upskill partner Mental Health and Wellbeing of older people. The workshop was Zoe Obitz, Social Worker from the Older Persons Mental Health team at Maui, Hawke's Bay and provided those who attended with insight and them in their professional roles working with our older residents.



agencies on facilitated by Te Matau A tools to assist

Central Hawke's Bay Disability Network

The network has met once during this with the highlight being coming together with other supporters to celebrate the official Hippocampe All Terrain Beach Wheelchair. required to purchase the wheelchair was network by the Takapau Lions, Waipukurau Hastings Masonic Lodge. The wheelchair is Centralines Sports complex in River Terrace, which is also the booking pick up and drop off location. The All Terrain Beach Wheelchair is for local residents and visitors to Central and supports the key network priority of for those affected by disabilities.



reporting period funders and launch of the The \$10500 donated to the Rotary and housed at the Waipukurau, point a free resource Hawke's Bay enabling access

Following on from confirmation of council's success with the Tourism Infrastructure Fund we will now be able to continue with our goal of increasing access in the district with the development of accessible toilet facilities and beach matting at Pourere Beach

Youth Development Network

The network has sent out a short survey to a large range of organisations and voluntary groups to assist them with the identified priority area of "Who Are We?" – Understanding who is working in the youth space. Once this information has been collated, we can then as a network begin to identify potential opportunities and gaps in service provision for young people in our district.

Central Hawke's Bay Food Secure Network

Network partners continue to work hard to ensure that food is reaching those in our community who need it. This encompasses food rescue and redistribution of excess an donated food, receiving and redistribution of the districts allocated New Zealand Food Network supplies and targeted food parcels to those whanau who require assistance. A smaller working group is continuing to scope out a plan for the best use of the infrastructure funding that was received from the Ministry of Social Development.

COMMUNITY FUNDING

Smarty Grants

Council launched their new Smarty Grants portal on 7 July 2022. Grants software provides us with an efficient and effective tool for administration of our portfolio of community funding. It will also make savings in council officers time and provide a streamlined professional service to funding applicants.



The Smarty Grants software enables us to streamline the application process and provide a professional service to funding applicants.

The Smarty Grants portal is accessible via our website and a number of workshops and drop in sessions have been offered to the community to assist them with accessing and navigating the new application process.

Creative Communities Fund

The second Creative Communities round for the year opened for applications on 29 July and closes at 5pm on the 19 August. The new promotional billboard has been completed and is currently displayed to promote applications to the fund.

Community Voluntary Organisation Support Fund (CVOS)

CVOS is currently open for applications with applicants having until Friday 5 August to submit their applications. \$10,000 is available for community groups who have new projects or who have never received CVOS funding before with \$20,000 available for ongoing support to existing community groups who provide community services in Central Hawke's Bay.

Community Pride and Vibrancy Fund

There have been two applications to the Community Pride and Vibrancy Fund in this reporting period. The fund has supported the districts two Matariki events in Takapau and Waipukurau. Matariki ki Takapau received a grant of \$685 to assist with their event held on Friday 24 June. This event began with a dawn karakia followed by a market day and games and activities for tamariki. An amount of \$4950 was also granted to Te Taiwhenua O Tamatea for the Matariki Festival held at Russell Park in Waipukurau on Friday 1 July. This event incorporated a range of performances for the large crowd gathered followed by a spectacular fireworks display.

Rural Travel Fund

The Rural Travel Fund is currently closed.

COMMUNITY PLANS

Regular reporting is provided in greater detail in the Strategy and Wellbeing Committee Priority report. Highlights for the period include:

Tikokino

Council officers have continued to meet regularly with the Tikokino Community Plan working group and the plan is currently in the final stages of graphic design. Local images have been sourced and will feature heavily in the document. The plan is scheduled for adoption by council at the Strategy and Wellbeing Committee meeting on Thursday 1 September.

Otane

The first public workshop for the Otane Community Plan was held on Sunday 3 July with around 45 residents attending. A range of consistent themes emerged from the korero and work has now begun on capturing all these themes into a draft document. Next steps will be to meet with local mana whenua and the established local working group where we will present the draft document for their feedback.



Takapau

The Takapau Community Plan was adopted by Council on 24 September 2020. A number of smaller focus groups continue to work on actions points and priorities from the plan. Council has had confirmation of funding from the Tourism

Infrastructure fund which now allows us to continue with consultation and implementation of the proposed Mobile Home Dump Station in the township.

Ongaonga

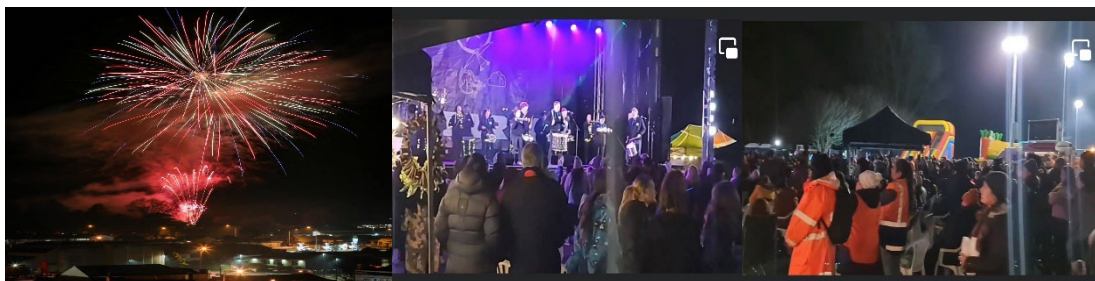
The Ongaonga Community Plan was adopted by Council on 24 September 2020. smaller focus group continues to progress the "Yeoman's Boiler gateway project" which seeks to have the boiler stack from Yeoman's bush erected on State Highway 50 to attract people into the village. The easing of COVID restrictions have enabled the community to progress Goal 5 – Bringing People Together with a number of popular events held recently at the Ongaonga Community Hall.

MĀORI ENGAGEMENT – TŪHONO MAI TŪHONO ATU

The Powhiri for the Ngāti Kahungunu Chair happened on the 10 June. A large crowd gathered to welcome in Bayden Barber who won the votes of the rohe for the Chairs role from Ngāhiwi Tomoana. Ngāhiwi has been the iwi Chair for many years and has a loyal following, representative of the relationships and partnerships he has built over the years. Bayden's appointment signals a change for Māori living in the Kahungunu region. In attendance were CHBDC (Central Hawke's Bay District Council) Chief Executive, Doug Tate, Councillor Exham Wichman and the CHBDC Pou Whātua.

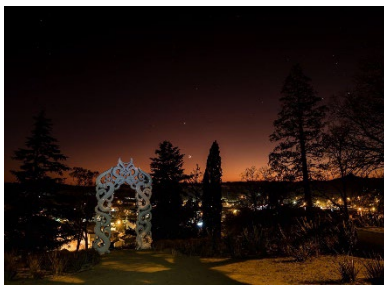
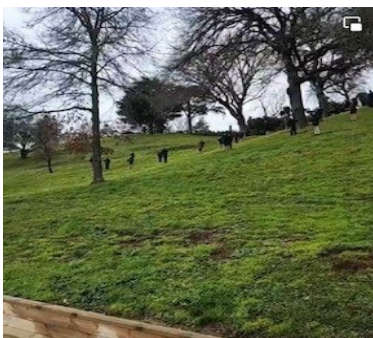
Te Pae Urungi is a collective of local government practitioners that hold responsibilities for Māori responsiveness, relationships and for driving Māori outcomes. Te Kupenga are the representative body in the Hawkes Bay region. On the 14 June Minister Nanaia Mahuta met with the collective to discuss government reforms and provide an update on Central Government direction. Minister Nanaia was happy to see the group back up and running again after a time in recess.

The engagement priorities for the month of June have been focused on two main events, preparation for the weeklong Matariki celebrations and the opening of Ngā Ara Tipuna, the story telling trails. In Tamatea we celebrated the week after the "first ever" official holiday to bring in the Māori New Year, providing us all across NZ with a "day off" on Friday the 24 June. The Matariki events were a repeat of 2021, (but better) with the addition of the dome from Te Atea Rangi providing a fantastic way to explain the Matariki constellation. Māori traditional navigation using the stars and expert knowledge was told during these sessions that were held with the public. To top off the week, we had a great evening celebration highlighting the amazing talent we have within our rohe.



The Ngā Ara Tipuna opening on the Friday of Matariki week in Tamatea made the

week extra special. Mana whenua, Council, whanau, community, and distinguished guests came together atop of Pukekaihou to celebrate the story telling trails. Years of preparation for the first phase of this project was highlighted. Minister Stuart Nash did the official opening honours, accompanied by Bayden Barber and Toro Waka. As the Manuhiri made their way up the hill, they were met with a set of three wero, challengers, while this was happening the tamariki, school children scattered alongside the hill were whirling the Purerehua, students were blowing the Putatara and the Putorino was expertly played by those known in the tradition of Māori instruments.



Economic Development Agency (REDA)

The Establishment group who are responsible for setting up the new Regional Economic Development Agency for Hawke's Bay are continuing to work closely with the Matariki Governance Group on the appointments processes for the final entity. In June Councillors received an update on progress of the REDA, with delays currently being experienced. The new entity is still aiming to be established before the end of the financial year.

Central Hawke's Bay Business Network

It was encouraging to see new faces and interest for the CHB Business Network meeting held on Thursday 16 June. Minutes of the meeting with nine businesses in attendance with a further nine apologies. Momentum is building for this new business led initiative and interest continues to grow as businesses recognise the importance of having this networking group. Work on the establishment of a Economic Leadership Group has also commenced, and will be further accelerated with the commencement of Council's new Economic Development Lead in August.



Breakfast with Brad Olsen – we supported a local event to bring economist Brad Olsen to speak to local businesses about the current economic climate specific to Central Hawke's Bay. With over 100 attendees, you can read about this successful event [here](#). Planning is underway for another business breakfast later in the year.

Our next meeting is scheduled for Monday 25 July.

Growing an Almond Opportunity



Earlier this year we secured funding on behalf of the Hawke's Bay region to assess the feasibility of establishing a NZ almond industry based on a premium product using sustainable agronomic practices.

This project is a partnership between CHBDC, HBRC, Wairoa DC, Hastings DC, Picot Productions (Pic's), Plant & Food Research, local CHB grower Tony Kuklinski and the Ministry for Primary Industries.

We've just reached a major milestone with the completion of three research/investigations with the highlights including:

- **Land Use Suitability and Environment.** The key finding was that while there was a number of locations identified that could provide good conditions for growing almonds, no locations were identified that would provide optimal conditions for almonds with few limitations to production.
- **Stakeholder & Consumer Intelligence.** While most of the focus group of consumers said they would be willing to pay a premium for NZ almonds, the degree of price uplift was limited.
- **Economic Feasibility.** Key finding was: with the right inputs and management structure, it is feasible to invest in an almond enterprise.

Once the project team has met on 25 July reports will be available on our website for the general public.

Jobs in Central Hawke's Bay - Turanga Mahi ki Tamatea

Local Jobs for Local People - the Jobs in Central Hawke's Bay team continues to support local jobseekers and employers to connect the dots and facilitate sustainable employment in our community. We met our measurable outcome annual target for the 2020-2021 by the end of June – achieving **53** measurable outcomes in this last financial year along with many more positive outcomes for our local community. July has started off well with **6** new measurable outcomes recorded already.



Our database of Central Hawke's Businesses continues to grow as do the connections and interactions we have with them. In the month of June, we connected with over 15 local businesses and have a total business list of 775.



Business Connect Details

Total Business List	776
Business Connections	325
Has Attended a BA5	52
Coming to the next BA5	0
Businesses Connected this week	16
New Businesses Connected this week	3
New Business Connections in the last 30 days	7
Monthly Email Subscribers	636
Business Connections in last quarter	124

Growing Great Entrepreneurs

GGE Course Applicants	43
GGE Waiting List	13
GGE Course Completed	22
New Business Established	21
Existing Business Supported	5
GGE Mentoring Participant	22
Current GGE Participants	6



Central Hawke's Bay Business Connections – Our monthly business newsletter continues to be successful way of informing the business community with relevant information. We are currently sending the e-newsletter via mailchimp to 637 recipients with 276 opened in June.

Business After 5 – On Tuesday 14 June 2022 we saw 10 Central Hawke's Bay Businesses attend our bi-monthly Business After 5 event hosted by the local radio station, Central FM. Although numbers were lower this month due to the weather and winter illnesses, it was a fantastic opportunity to have more one on one conversations and get to know the attending businesses much better. It was an informative evening with Tim Ewen speaking to the group about the history of Central FM and the advantages of radio advertising. The evening was well received with the new faces really enjoying the opportunity to look through the recording rooms and offices while having a drink and enjoying beautiful catering by Latitude Café.



Growing Great Entrepreneurs - On Tuesday 21 June we congratulated our second group for 2022, seeing 6 entrepreneurs completing the program. We are so proud of these fabulous entrepreneurs and can't wait to see how their businesses grow in our community. Participants understand the "why" that drives their business; they are guided to understand their validation and financial sustainability; run through marketing and sales, and at the end of the workshop pitch their business ideas and plans to their group members and guests.

Through this initiative, we have seen **21** new businesses established in Central Hawke's Bay over the past 2 years and have supported **5** existing businesses. Jobs in Central Hawke's Bay continue to support these new businesses with 6 months of group mentoring with David Trim.





Youth Transitions – This month has seen the Youth Transition space connect with 75 youth from our student survey database. There have been 92 reciprocal interactions.

We now have 246 youth on our survey database with 93 referrals 2022:

- 161 have returned to school.
- 66 have gone onto further Education, Employment or Training.
- 8 have not responded.
- 11 youth job seeking, we are working closely alongside that are not in employment or training.

The introduction to the [Student Pathway Survey](#) has seen **68** new referrals which begins the build-up of the next lot of students to follow up. We are also seeing the value of having a face through the school and students trusting and asking for help themselves with things like real me accounts, cv's and cover letters we look forward to drawing the prize for those that completed the survey. The time building up information around creating a cv and asking questions is helping to build a picture and be able to share ideas, thoughts and resources with students.



Careers Expo - On Tuesday 21 June, we supported the Central Hawke's Bay College year 12 and some year 13 students to attend the **Hawke's Bay Careers Expo** in Taradale. The students were shy at first but once they were encouraged to ask questions they warmed up and got involved with what was on offer. There were plenty of discussions around the Tourism and Hospitality trade as students investigated exchanges and travel internship options. It was a great morning and gave the students another chance to explore and for us to get to continue to build relationships.

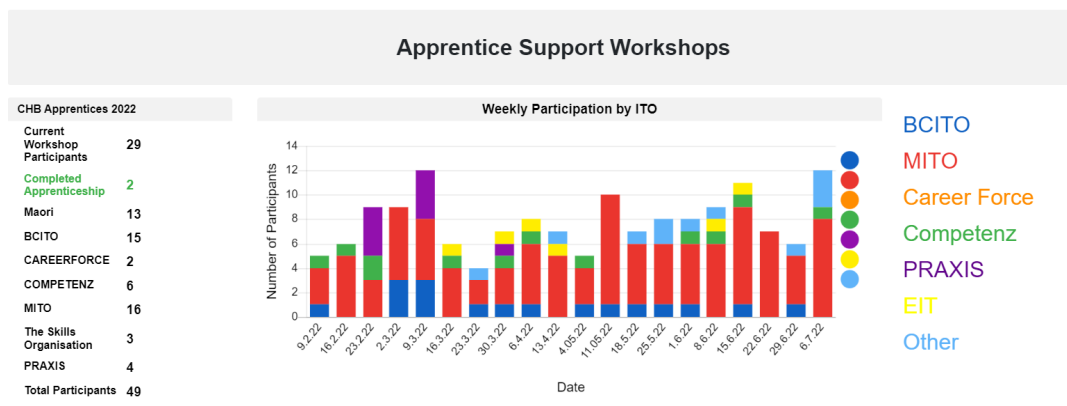
Supporting School Leavers - Following up with 2021 year 13 students has seen another few students whose *plan A* has changed, and we are now supporting them with licence, budget services and looking for work. Others are keen for support with Student Loan applications as the July courses begin.

It is awesome to be getting referrals from youth who are sharing their positive experiences with each other, a 19-year-old Tane came in looking for similar support as his friend shared his story with him and suggested he come and see us. This meant connecting with budget services to help assist with fines and to connect with courses that may help him enter the Defence Force. We look forward to walking alongside this young Tane as he chooses a different path.

Te Māhuri - To date we have placed **12 jobseekers** into the programme with **6** securing ongoing employment, **2** currently out of work and **4** still in their 6-month placement and thriving in their roles. We have **1** more placement we are hoping to finalise next month. All Te Māhuri placements include wrap-around support and monthly reporting from employers to gauge progress and identify areas where further support may be required, this ensures that issues that arise can be resolved positively. Sample employer feedback *"This is such an amazing initiative, because of the funding we have been able to employ someone quite early on. This will have exponential affects to ongoing employment. As a business owner I now have the experience and confidence to employ more people in the future. Thanks team"*



Our [Apprentice Support Workshops](#) continues to be really valued by those attending. Though we have had a couple of quieter nights recently with sickness and the cold nights keeping some participants away a bit. Wednesday 6 July was our last workshop for the term, we take a 2 week break for the school holidays and resume again on Wednesday 27 July.



See above stats for our weekly attendance this year. Congratulations to Niki (one of our MITO trainees) who has been to every workshop available this year. He consistently works through his paperwork and is getting things done! I recently surveyed some of our participants to gather some feedback about the workshops – see below.

The workshops continue to be a highlight of my week, catching up with our local trainees and supporting them to Thrive in their training.

Jobs in Central Hawke's Bay are finalists in the 2022 LGNZ Excellence Awards!

Jobs in Central Hawke's Bay along with the CHBDC Project Management Office are 2 of the 4 finalists in the Economic Development category. At the time of writing the winner will be announced on Friday 22 July.

Ki O Rahi – This week our Jobs in Central Hawke's Bay team supported the local year 5-8 inter school [Ki o rahi](#) competition as part of our local Matariki celebrations. This was a great opportunity to continue to foster and build connections with our local community, while also beginning to build rapport with the future generations of jobseekers and world changers!



Presentation to Craigmore Annual Conference – Growing our People – on 30 June, Jono was a guest speaker along with local contractor Doug Brightwell to share our story of working collaboratively to create an amazing opportunity for Riley. Riley is a local 19 year old with cerebral palsy, Jobs in CHB have been working with him since 2020. He has participated in our farming work experience pilot, where although he was a fantastic employee and team member, his physical limitations prevented him from securing permanent work on farm. Fortunately, we were approached by Tikokino Contractors owner Doug Brightwell who expressed an interest in training up new digger operators. Jobs in CHB Connected

the dots, securing an opportunity for Riley to have a go with Doug. Doug was super excited about Riley, his great attitude, and the fact that with good training there is no reason he won't become a fully competent operator unimpeded by his physical limitations! Working alongside MSD we continue to support Riley he has been doing 1 day/week work experience, but this week he will be employed 2 days/week with Doug, hoping to grow into full time work by the end of the year! This is a great example of working collaboratively to get great results for our community!



Awesome to spend time at the start of July with Mayor Bernie, Michelle and Brent from the **Horowhenua District Council** to talk about the successes of our Mayors Taskforce for Jobs MTFJ local initiative #JobsinCentralHawkesBay. We wish you all the best with the development of the initiative in your context. Thanks Monique Davidson (our former CHBDC CE) for the connection.



He Ringa Whānau Ora

He Ringa Whanau Ora continues to progress their kaupapa with whānau within Tamatea Central Hawke's Bay. The mahi is extending beyond the core role and includes providing intervention to inhibit the growth of mental health issues in the workplace and workforces within the rohe. Kaimahi have also reviewed timing of their engagement relative to the impact and developed a number of ways to improve in this space.

TOURISM

Spring Fling Planning

Even though we are now well into Autumn, planning for the next Spring Fling event in Central Hawke's Bay is well underway. A lot of work happens behind the scenes for events like this and our partners Hawke's Bay Tourism have been working hard on our behalf to facilitate the programme design and a prospectus was sent out to all interested parties with registrations now complete. 17 events have been successfully confirmed on the programme and work is now underway to start organising the advertising schedule and programme design.

At the time of writing the programme will be launched shortly.



DRINKING WATER

Drinking-Water Compliance

District Drinking Water Supplies

Another successful period as we achieved compliance across all water treatment sites and distribution zones throughout the months of June and July. There has been no significant change or events throughout the period, although progress is regularly made by the team in preparation for the updated drinking water standards due in July of this year.

Operational update

The team have made significant progress in the areas of RFS management, further reducing the outstanding number of active and overdue requests.

The team have been working closely with contracting partners and the projects team in the delivery of key connections and assets; however, operational focus continues to be on network repairs, while we temporarily outsource new connections to third party teams.

Overall, another busy period but the team is in high spirits and continues to deliver high quality levels of work. With a push for new resources and driving efficiencies in some key focus areas, the team will continue to improve in all areas.

Waipawa to Waipukurau Water Supply (W2WS)

In May 2022 council approved the project to progress to construction and a budget increase to \$15.8, with the river crossings to be confirmed in 2023 once relevant due diligence has been completed, officers are now finalising design sections, planning the construction sequencing, as well as finalising landowner agreements and consents required.

The access track to the new reservoir has been designed and will be issued as a work order to civil and pipeline contractors panel this summer. Watch this space over the coming months as the project progresses further.



Tikokino

Mains

Upgrade (Stage 2 and 3)

Tikokino Rd Stage 1 & 2 are 97% complete. The existing AC main has been upgraded to 400mm PE for the first 1.6kms and 280mm PE for the next 1.1km. Pressure testing for both stages has now been completed. A re-design of the pipe bridge is the final piece before this will be connected to rising main leading to the reservoir.



Waipawa/ Otane Firefighting and Shortfalls (Stages 1-3)

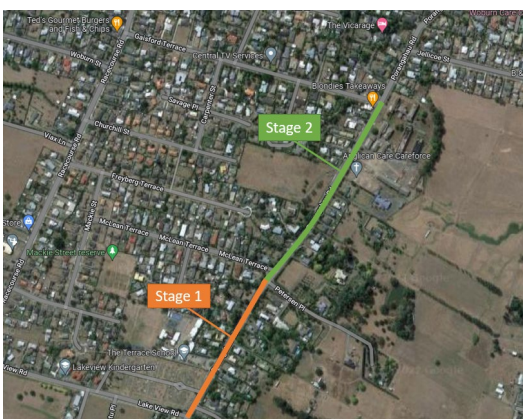
Stage 1 and 2 are 98% complete. The main has been upgraded to 250mm from the Abbotsford Road Reservoir through to the top of Mathew Street. Over the last couple of months, we have had 2 major shutdowns and completed the cross connections tying the new pipeline into the existing network.

Stage 3 Design is complete and will be one of the first projects completed by the highly anticipated panel. This will complete the project upgrading the main from Abbotsford Road to the bottom of Mathews Street.



Pōrangahau Rd Water Supply Upgrade

Fulton Hogan are currently in the process of establishing on site. This construction is due to start this month with completion programmed for May 2023. The upgrade will address known issues and support expected growth within the area. Stage 1 is from Lake view Rd to Peterson Place and Stage 2 is from Peterson Place to Gaisford Terrace.



SH2 Borefield Upgrade

Construction of a run to waste system to address turbidity concerns has been completed. Testing and commissioning of the Run to Waste has been carried out with the Run to Waste now operational.

A final issue with a pump is still to be resolved prior to decommissioning of the existing pump system, this is being progressed with the pump supplier. In addition, Council has looking into resources to carry out a Pump System Design Investigation which is intended to provide information of the root cause of the pump issue.

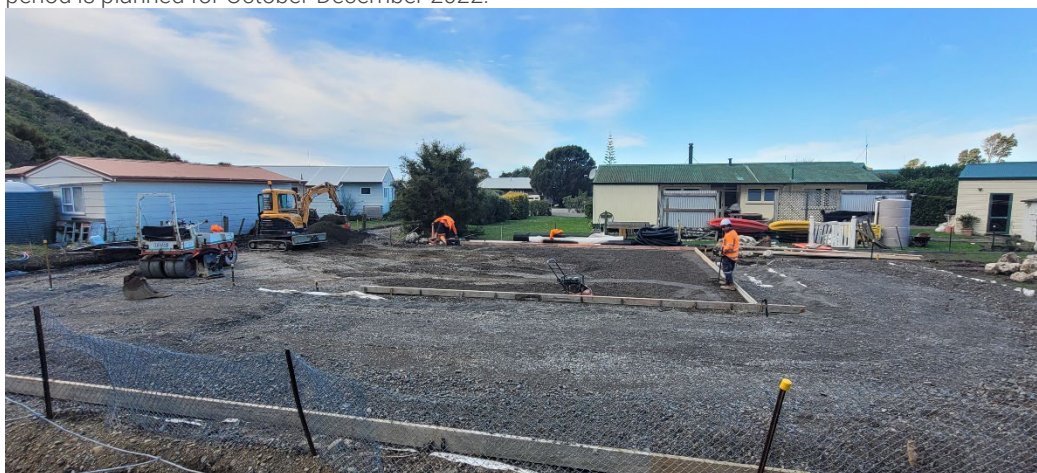
The Borefield is currently running on 1 New Bore and Pump in conjunction with the Original Stage 1 Bore A Pump upgrade.

Kairakau Water Upgrade

Trility contractor is in full gear with the development of the new water treatment plant for Kairakau. Topline Contracting a subcontractor to Trility has completed 90% of the works on the foundations for the driveway parking hardstand and tanks areas, including installation of underground services. Work is now focused on boxing for concrete and, once completed, Topline Contracting will commence work on culvert crossing and drive extension towards new water treatment plant platform.

All the excavation works were undertaken in the presence of an archaeologist who was monitoring for any artifacts of archaeological interest.

Design of the new water treatment plant is now completed and offsite fabrication has commenced and will continue through to September 2022 when the treatment building is planned to arrive onsite. Commissioning and operational proven period is planned for October-December 2022.



Reservoir Renewal Programme

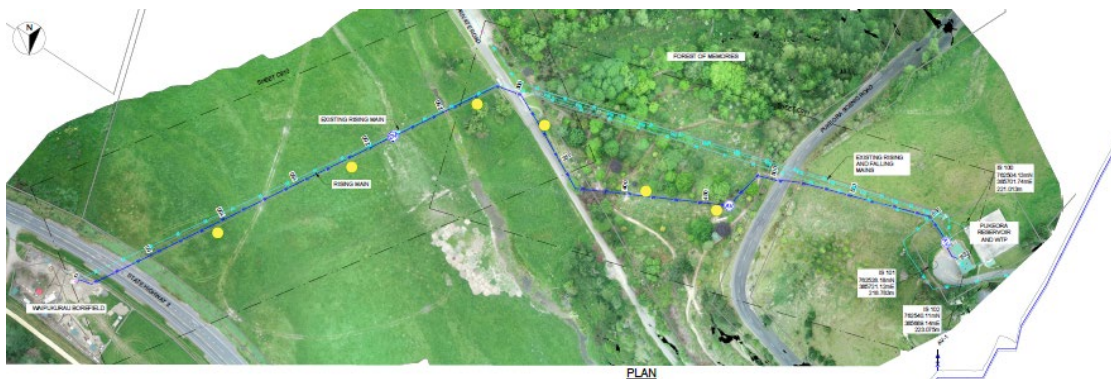
Abbotsford - Waipawa

Officers are in the early design and landowner negotiation phase of the plan to renew / upgrade the Abbotsford Reservoirs that supply Waipawa and Otane. These are planned to be upgraded from 1100m³ of water stored to 2800m³ of water stored as a key project in the LTP and construction is planned for 2023 all going well. Geotechnical works are planned for the next few months and construction of the new access track is planned for this summer.



SH2 Borefield to Pukeora Reservoir – Rising Main Replacement

The design of the rising main is 90% complete, however, officers are undertaking cost-benefit analysis of the alternative option. While the replacement of the Pukeora reservoir (including the raising main) can only happen following completion of the new Central reservoir, the focus has now shifted to Waipukurau-Waipawa second supply and the construction of the Central reservoir and all interconnectivities.





Wastewater Treatment Operational Performance

Delivery of the DAF unit at Waipawa has shown a significant reduction in TSS, DRP and E-coli numbers through June and July, although much of the improvement are towards the latter with commissioning and handover to our operational team.

Significant rainfall through the period has seen a rise in pond levels across all sites, although Waipawa and Waipukurau are typically affected more than the smaller townships. Completion of the waveband and DAF projects has provided greater resilience and contingency to these sites; however, we will continue to closely monitor and optimise the treatment processes to minimise the future impact of these event.

Isolated non-compliances across the district which are being closely monitored and managed by the compliance team. Further work is underway to better understand and ultimately tackle the issues currently seen at Waipukurau WWTP.

Wastewater reticulation performance

With only one significant dry weather event through the period, and a handful as a result of July's weather event, the performance of the networks is higher than the seasonal average. We continue to work with HBRC to better manage our networks and the response to consent breaches and overflows. There is a body of work underway to streamline our reporting and management process, aligning ourselves with HBRC's requirements.

Trade Waste Reviews and Improvements

An improvement programme is nearing completion largely supported by a new Trade Waste Bylaw which came into effect on May 13, 2021. Central to this project was the development of a new charging regime that involves Trade Waste inputs paying for capital upgrades proportional to their contribution to waste received at the treatment plant.

The charging regime has had a positive effect on the quality and volume of Trade Waste received by our wastewater treatment plants with cleaner production techniques being implemented by most traders. Monitoring and compliance is having an overhaul with a new, accredited sampling and testing provider and new data collection and display software. Management systems are developing for smaller scale Trade Waste dischargers and as part of this, Grease Trap Management is being improved internally through the environmental health system. New Trade Waste consents have been issued for each Trader with conditions that are more realistic and enforceable. Trader compliance has measurably improved. Implementation of discharge flow metering is under development.

Inflow and Infiltration Management

Stormwater and wastewater system modelling has provided recommendations informing this programme of work which uses central government funding to identify and remediate wastewater and stormwater defects. This programme of work is underway with manhole repairs, pipe relining, flow monitoring and CCTV. A major contract was awarded to Pipevision for the investigative works. A quarter of the network has been investigated; 18 kilometres of pipe and 250 manholes. Renewal prioritization follows from here as well as detailed investigation.

Waipawa, Waipukurau, Otāne Wastewater Upgrade Project

Work is progressing, with significant focus on delivering the Otāne to Waipawa conveyance pipeline and pump station while also planning upcoming projects for this financial year and progressing the long term solutions to move to a centralised treatment plant and away from current surface water discharges. Details on current projects below:

Otāne to Waipawa Pipeline (Stages 1, 2, 3 and 5)

The Otāne to Waipawa wastewater pipeline is nearing completion with all the approximately 9km of pipeline in the ground across Stages 1, 2, 3 and 5. Fulton Hogan are currently working their way along the pipeline installing the final valving details into the already installed chambers. The pipeline is due to be pressure tested by the start of August to enable the commissioning of the pump station and the start of the wastewater conveyance to Waipawa.

Otāne to Waipawa – Pump Station (Stage 4)

Stead Construction along with subcontractors SCL and Max Tarr are continuing work at the Otāne WWTP on construction of the Pumping station to convey wastewater to Waipawa. The pumps are now installed and the electrical and mechanical work to enable their commissioning is mostly completed, programming of the system to run the pumps is also underway. Commissioning planned for the start of August.



Waipawa & Waipukurau WWTTP Short term Improvements

The installation of DAF unit at the Waipawa WWTTP by providing customized and optimized tertiary treatment. This system effectively takes the place of the non-performing lamella clarifiers. With the improved treatment quality post DAF units, it is expected that the UV treatment process will also see an improvement in its efficiency. This work is occurring alongside and to complement the longer-term upgrades.

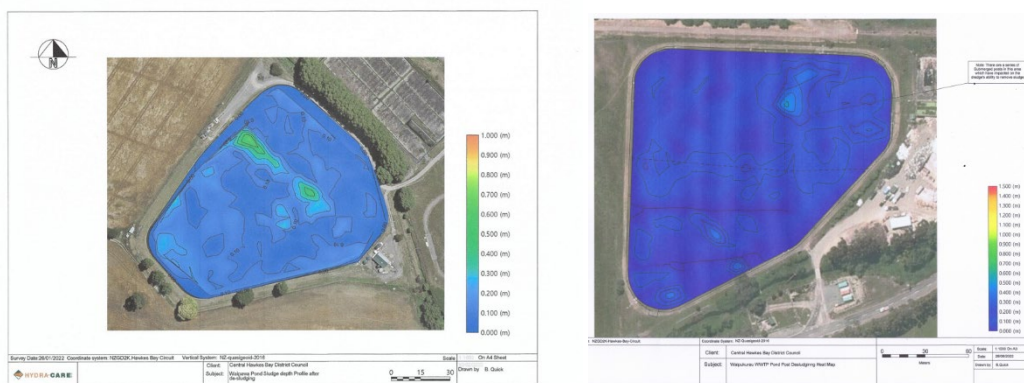
The installation, commissioning and trial period have been completed and the system has been integrated into the live treatment process. Initial effluent quality results are demonstrating that the system is performing well and even exceeding expectations.

		Results										
		DAF Feed						DAF Effluent				
		TSS	DRP	Ammonia	cBOD	E.Coli	pH	TSS	DRP	UVT	Ammonia	cBOD
Median		52.0	2.8	23.2	21.0	3050	7.4	8.0	0.006	68.5	23.2	6.0
Average		52.3	2.9	22.7	22.0	3074	7.4	9.8	0.007	67.9	23.1	6.0
90th %		78.2	3.7	23.5	26.0	6000	7.7	16.0	0.011	73.4	23.7	6.0
New Consent Limit								25	0.2		33	3



Waipawa and Waipukurau WWTP Pond desludging

Hydracare have completed the desludging of the oxidation ponds at the Waipawa and Waipukurau WWTP's with 1905 dry tonnes of sludge removed from Waipawa and 1506 dry tonnes removed from Waipukurau.



Waipukurau and Waipawa WWTP – Pond Waveband Remediation

Waipawa and Waipukurau WWTP have been completed with the construction of a rip rap bank (including placement of geotextile fabric, a new concrete nib, and placement of rock). Stairs to all sampling locations were also installed to improve operator safety while sampling.

Waipawa Wastewater Resource Consent

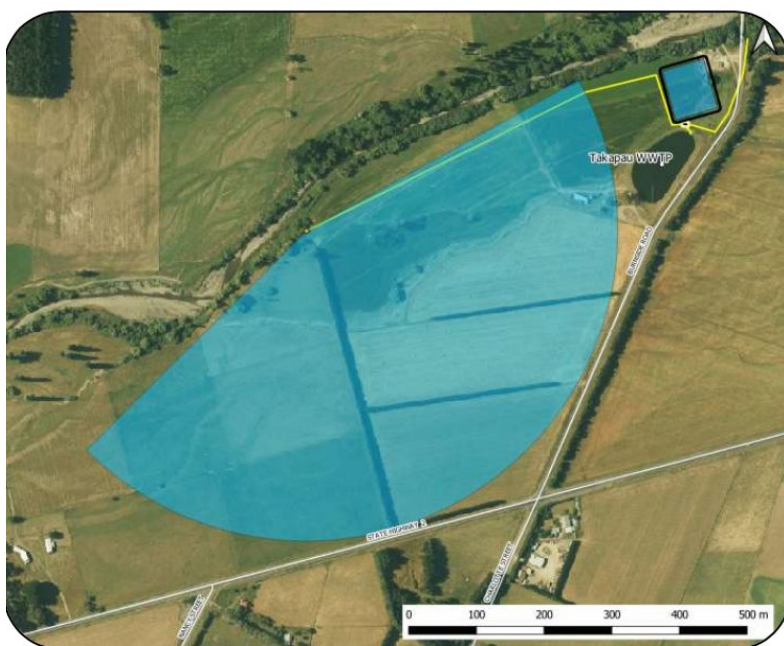
An application to change the existing resource consent conditions of the Waipawa wastewater discharge consent to enable the inclusion of flows from Otāne was lodged with HBRC on the 17th of December 2021. This consent variation has now been issued by HBRC enabling the conveyance of treated wastewater from the Otāne WWTP through to the Waipawa pond for further treatment and then discharge.

Takapau Wastewater Upgrade Consenting Project

The consent for this wastewater upgrade was publicly notified in late 2021. Pre hearings took place in October and November 2021 and most recently on 28 June 2022. CHBC anticipates consent will be granted later this year.

Engagement with mana whenua on opportunities for collaboration during the project continues. Updated design scope is the next upcoming milestone for the project.

An information sheet with detail on the project can be found here: <https://www.chbdc.govt.nz/assets/Uploads/Takapau-Wastewater-Community-Information-Sheet-October-2021.pdf>



Pōrangahau and Te Paerahi Wastewater Upgrade Consenting Project

Resource consents for Pōrangahau and Te Paerahi wastewater treatment plant upgrades were publically notified on 14 April and submissions closed on 17 May. Eight submissions were received. Submissions were received from five groups from four groups, Ngāti Kere Hapu Authority, Ngāti Kere MACA Working Party, Rongomaraeroa Marae and Te Toro o Punga RMA Unit and Hawke's Bay District Health Board.

The first pre-hearing meeting was held on 27 June 2022. Currently Council are working with the five groups of submitters on the consent to satisfy concerns and ensure appropriate conditions are set to deliver the proposed outcomes.

Geotech work to inform design was completed in mid-June.

You can read more about the project [here](#).





Stormwater Operational and Compliance update

High rainfall for the period, although lower than the seasonal average has produced a number of complaints and RFS's for localised flooding and impacts on the wider wastewater network.

Although less significant than our March rainfall event, we are continuing to investigate and maintain critical assets and undertake a programme of works that will better prepare the district for future events. We expect to see a number of open drain clearances later in the year as weather allows, working closely with the PMO and HBRC teams to minimise the potential downstream impacts.

Stormwater Catchment Management Plan

Central Hawkes Bay District Council is currently commissioning an overarching stormwater catchment management plan which will outline the direction of stormwater management for the district. Working with project partners Stantec we are liaising with internal stakeholders to help capture problem areas, risks, and opportunities for future upgrades. We are aligning this plan with the results of the recent hydraulic modelling work as well as the stormwater improvements outlined in the Long Term Plan. A draft version is scheduled for review in August, with completion planned for September.

Waipawa/ Otane Stormwater Model

The model build and calibration for Waipawa/Otane is complete. Recommendations to service development, future growth, network performance and environmental impacts have been developed. Integration of these within the Catchment Management Plan is underway. Workshopping with key users is ongoing with recommendations and further scope planned for implementation.

Waipukurau Stormwater Model

A hydraulic model update is being undertaken by WSP, an initial network walkover was undertaken in December, topological survey of manholes, pipes and open drains has been completed and the model is being built. The hydraulic model will assist in development planning and identifying problem areas. We are also working with HBRC to include lake Whatuma in the scope of this work to give some idea of where development can be undertaken and to increase our understanding of the impact of lake levels after storm events. Integration of the findings of this work within the Catchment Management Plan is underway.

Nelson Street Stormwater Upgrades

Nelson Street Stormwater project in collaboration with our construction panthers Higgins is now 100% complete.

Water runoff is now serviced by new sumps and a network of up to 600mm in diameter concrete pipes that disperse surface water causing flooding issues on Nelson Street in the past. The pipe networks lead to the maxi bubble up sumps on Gaisford Terrace and the stormwater is then collected by mega sumps on the western end of Gaisford Terrace. Recent periods of rainfall have demonstrated the success of this project with no instances of surface flooding in this area reported.



Maintenance and Re-seals – Downer

The following commentary is based on routine reporting developed in partnership with contracting partner Downer. This reporting is used monthly for Council and contractor asset managers to review planned and completed maintenance and re-seal works.

The Contractor has been working on the regular programme as well as responding to the weather events of March and May.

March Storm Response - Downer

Work continues around the district re-instating drains, re-shaping metal roads, and clearing debris from the culvert inlets that accumulated during the storm event. This work was treated as a high priority, so the council could claim as much of the 81% FAR as is possible before the end of June.

Reseals - Downer

The reseal programme is complete for 2021/22, and sites have been scoped for next year's programme. Pre-seal repairs for next year's programme are already underway. This year saw a clear improvement in the planning and execution of the programme which enabled us to complete the work earlier than anticipated.

Bridges, Structures and Area Wide Pavement Treatments - Higgins

Major work is complete on the Nelson and Reservoir Streets reconstruction. There is some minor tidy up work to be completed including road marking which will be complete when the weather allows.

With the funding request received from Waka Kotahi for the March 2022 event, eight of the damaged sites requiring geotechnical input were completed before the end of June which allowed council to take advantage the higher FAR rate for this work. The remainder of this program (six sites) will be carried over into the 2022/23 budget year, with geotechnical testing completed and designs underway by the end of June.

Footpaths

Footpath maintenance and the construction of new footpaths remains a high priority focus area for our communities with steady feedback, questions and requests received. Council has an active footpath maintenance and renewal programme with some large sections of footpath due for significant upgrade work in the next budget year. The new footpath construction programme is also active with the construction of Matthew St now complete. Discussions have been undertaken with Otane residents to identify the next locations for new footpaths. Due to limited room within the road reserve, we are in discussions with the school to obtain an easement on the edge of the property to construct a full width footpath. New footpaths are programmed via a prioritisation tool/matrix which is based on criteria set in a Policy of Council. The application of this Policy is being reviewed to ensure it is meeting expectations of both Council and Community.

Other Works

Work is progressing on the Single Stage Business Case for Porangahau & Wimbledon roads (old SH 52) with support and input from Regional Waka Kotahi staff.

Designs for intersection improvements as identified in our business case are being progressed ready for construction as budget allows. Work on the Road to Zero (R2Z) project at the intersection of Hatuma, Ngahape, Woburn and Arlington roads has been designed and the new signage has been received. When the weather improves, we will implement the signage and road marking changes. This project involves enhanced signage and intersection controls to better define give-way rules at the intersection.

Kairakau Road Rebuild – Higgins

The property required to construct the new 2 lane access to Kairakau has been secured and site preparation with the re-location of the fence, vegetation removal and the construction of silt control devices has been completed. The early stages of earthworks to prepare for the new road foundations have started however the recent weather has been severely affecting progress with the effects of the weather still evident many days following the actual rainfall. We continue to work with the contractors to ensure progress is efficiently achieved with the view to deliver the new road before Christmas 2022.



SOLID WASTE

Waste Free CHB

Waste Diversion

Green waste, scrap metal, e-waste, tyres and recyclables from agriculture waste continue to be diverted through diversion options at our transfer stations.

Last month, 687 individual tyres were diverted. The tyres were to be shredded and exported overseas for reuse.

The programme for CHBDC Waste Management and Minimisation Plan (WMMP) Action plan for the next fiscal year will focus on the following priorities:

- Continue to focus and where possible, expand waste minimisation education programme at schools.
- Support initiatives that encourage individuals, households and small community groups to divert green waste and food waste through small scale or home composting opportunities.
- Increased public awareness around our kerbside recycling – where it goes, what happens to it and what it ends up as.

Waste Minimisation Education

Waste Minimisation education continues to be delivered through the zero-waste education, paper for trees and EnviroSchool programmes.

A summary for the past fiscal year is shown below:

Programme	Participants
-----------	--------------

Enviroschools	8 schools and 2 early childhood centres
Zero waste education	407 students through 7 schools
Paper for Trees	22 schools registered with 26 tonnes of paper diverted and 126 native plants planted.

Kerbside Recycling and Refuse Services

The table below summarises the presentation rates for recycling:

Week Ending	Plastic /Fibre crates	Participation Rate * based on 3621 eligible households	Glass crates	Participation Rate * based on 3621 eligible households
05.06.2022	2356	65.0%	877	24.2 %
12.06.2022	2316	64.0%	813	22.2%
19.06.2022	1635	45.1%*	717	19.8%
26.06.2022	2231	61.6%	731	20.1%
03.07.2022	2305	63.6%	806	22.3%

The participation rate for plastic and fibre crates has remained above 60% except for the week ending 19 June 2022. This was a result of Council advising residents to hold off presenting recycling due to high winds in the area on Monday of that week.

Glass presentation rates remain steady hovering around the 22%– 24% mark. It is likely that less glass crates are being presented because less glass is used as a packaging material and thus, less is presented weekly.

Waipukurau Transfer Station Weighbridge

The PMO is currently working through an opportunity to fund a new weighbridge at the Waipukurau transfer station. A new weighbridge will allow council to record, and charge based on actual weight of refuse being dumped, provide more accurate kerbside recycling collection data to better understand if we are successful in increasing service participation and gain a better understanding of diversion of these materials from landfill. A proposed site layout was drawn early June (see below). End of June/start of July 2022 a survey was conducted which received 34 responses from the community. These responses will be used to gauge what concerns the public may have and what else CHBDC can do to improve the waste management system.



Landfill Operations

Landfill operations continue uninterrupted. Officers continue to work with service providers to progressively update and refresh existing health and safety protocols at the landfill, in line with industry best practice. To date, updated protocols and systems have been introduced to manage fire risks, hazardous waste disposal risks and vehicle accident risks. These protocols are anticipated to reduce the occurrence of incidents associated with such hazards in the first place and if they do occur, provide clarity on the roles of responsibilities for both parties to respond effectively when these do occur. Below is the summary of the amount of waste received at the district landfill over the last fiscal year compared with the previous year.

Fiscal Year	Waste from Taranaki /Pahiatua	All other waste (generated by CHBD)	Total Tonnages received landfill at the (tonnes)*
Ending June 2022	5,364	9,559	14,923
Ending June 2021	4,768	9,951	14,719

* Based on landfill weighbridge data.

Total tonnages to landfill have increased by 200 tonnes when compared with last financial year. Further analysis shows that out of district waste is increasing whilst waste from within our district is reducing. This is positive news providing officers optimism that the community are embracing the Waste Free CHB message.

CONSENTING

Consent application volumes for 1 April – 30 June 2022 reporting period

Building Consents:

- Total consents: 141
- New dwellings: 36
- Total value: \$20.4M

Resource Consents:

- Total consents: 58
- Number of new lots to be created: 126

Application volumes this quarter follow on from a period of unprecedented growth for our District. For the first period since early 2021 there are indications of a flattening in the volume of both building and resource consent applications. Demand for new housing has remained high this year with an increase of 18% in new dwelling consent applications compared to last year. Continued product shortages, the impact of covid and increasing interest rates has curbed growth this quarter compared to earlier periods this year.

Resource consent application volumes have decreased this period however the workload remains steady with a high number of 223/224 applications being processed as subdivisions are concluded. We continue to work our way through the engineering approval stages of several large subdivisions and complexities associated with implementation of the Proposed District Plan. The RMA Hearing for the Springhill 312 lot rural subdivision was heard on 17 and 18 May with consent granted early July, concluding a 14 month consenting process. A summary of consenting volumes and value compared with the previous year is provided below.

April 2022 – June 2022

Building Consents	Apr - Jun 2021	Apr - Jun 2022	No. Change	% change
Volume - applications	161	124	-37	-30%
New dwellings - applications	40	36	-4	-11%
Total value (\$M)	\$20.1	\$20.4	\$0.3	1%
Resource Consents				% change
Volume - applications	123	58	-65	-112%
No. new lots to be created	712	126	-586	-465%
Building Consents	2020 - 2021	2021 - 2022	No. Change	% change
Volume - applications	434	529	95	18%
Resource Consents				% change
Volume - applications	334	257	-77	-30%

Resourcing

While consent application numbers have started to flatten this period, the workload remains high with several large and complex applications in various stages of engineering approval.

We continue to rely heavily on the good work within our team as well as our consultant partners, National Processing, Stantec, WSP and The Property Group (TPG), for the provision of building and resource consent processing services and specialist engineering design and construction monitoring input.

The focus on fast tracking the training our three Building Consent Officer Cadets has continued with all three achieving independently assessed competencies allowing them to undertake some inspections and processing of minor consents. While the reliance on external partners to assist with the high workload remains, our ability to process more consents in-house is increasing and we expect this to continue in the coming months. The introduction of a new online building consents portal in July is expected to further streamline and simplify the process for our customers.

We continue to recruit in an incredibly tight labour market but have been unable to fill existing building consent officer and planner vacancies in the last two years. Meeting statutory processing timeframes will remain a challenge with our external partners also facing similar capacity and recruitment issues. A shortage of building consent officers, planners and engineers is a national issue.



AND OPEN SPACES

Thriving Places & Spaces for a Thriving Future

On 7 July a suite of strategies were adopted:

- Play, Active Recreation, and Sport Strategy 2022,
- Central Hawke's Bay Camping Strategy 2022,
- Toi Tamatea - Central Hawke's Bay Arts Strategy 2022,
- Community and Civic Facilities Plan 2022, and the
- Central Hawke's Bay Town Centre Master Planning – Waipawa & Waipukurau



This represents a year of engagement with various working groups in our communities, surveys of all ages, research, and discussion and analysis to understand and respond to the district's current and future needs across these areas. These documents will guide decision-making that is vital to the bodies, hearts, and minds supporting our communities to continue to thrive.

Two documents are yet to be finalised: The Central Hawke's Bay Reserves Management Plan 2022 and the Sport and Recreation Network Plan 2022. Consultation closed on 18 July and submissions are now being broken down into their component issues, analysed, and recommendations being prepared for hearings and deliberations to be held on 1 September. Majority of submissions relate to the coastal reserves camping and amenities.

Waipawa War Memorial Clocktower Rededication

On 21 July 2022 the Clocktower turned 100 years old. The following Saturday, 23 July, a civic event was held to rededicate the monument that has been an iconic landmark for Waipawa and recognises her fallen soldiers of previous wars. Staff have been busy for the last 6 months working with local horologist and other specialised contractors to refurbish the clocktower inside and out, so it is ready for the next 100years!

The Governance team and RSA led along with support from Places and Open Spaces team a memorable rededication service and the rain stayed away unlike the initial dedication. Active transport took those celebrating from the Municipal Theatre, then piped down to the Clocktower, after the flyover by a couple of bi –planes from the Waipukurau aerodrome (the RNZAF affected by COVID) many joined the walk to the CHB museum for the exhibition on the 'birthday girl'. Finally the VIP guests returned to the CHB Municipal Theatre for refreshments including mulled wine.

Hunter



Park/Pukekaihai

Some impressive works have taken place to transform Hunter Park into Pukekaihai over the last few years. It was amazing to see it all come together for the official opening ceremony.



Tourism Infrastructure Funding to benefit 3 areas

On the first annual Matariki holiday Council was informed that all of its applications for Round 6 of TIF received funding. Three especially benefit our open spaces.

Pourerere Beach which was awarded funding in Round 5 for replacement toilet block and single unit for north end of beach has additional funding to provide more amenity at the north end reserve by the lagoon to develop as a day parking area with pathways and views to lagoon. Additional funding also support improvements to the existing water services. No additional water services are planned.

Otaia/Lindsay Bush parking area in river berm serves not only serves this nature park but also regional council river access and the new western extension of the Tukituki Trails. Funding received is to provide public toilets and improve carparking and signage.

Takapau Cenotaph Reserve also received funding for a motorhome/caravan dump station to be located off of Meta Street.

Rongomaraeroa marae in Porangahau has received funding to allow connection to the town wastewater network.

Consultation has occurred on all three projects through the draft Reserves Management Plan of which submissions are currently being analysed. Pourerere Beach residents and owners also received a flyer to provide feedback on the plans for the reserve by the lagoon. Otaia/Lindsay Bush application was supported by Regional Council, local chapter of Forest and Bird, and the Rotary Rivers Pathway Trust. With the significance of Otaia, local Iwi will be consulted.

Libraries

Challenges again are evident in the life of the libraries. The spike in Covid 19 has meant that the libraries have not only been affected by this personally which has meant we are running the libraries with limited numbers of staff. Covid and the flu have really affected our community which has meant people have been isolating and we have been providing books to either be collected from the libraries or dropped off- we are so pleased to be able to offer these services in these times.

The limited number of staff has meant that the clearing out of the old Waipukurau Library is an ongoing project which we hope to complete in August. With the borders opened AA are now busy issuing International Driver Licences for people travelling.

The lunchtime Friday visits to the libraries by the JPs have resumed and are proving popular.

Talk Digital- drop-in digital tech support service is continuing to be supported by the library staff with community taking full advantage of this service.

The Digital Inclusion role has been shared very successfully by all the library staff who have embraced an extension to their existing roles.

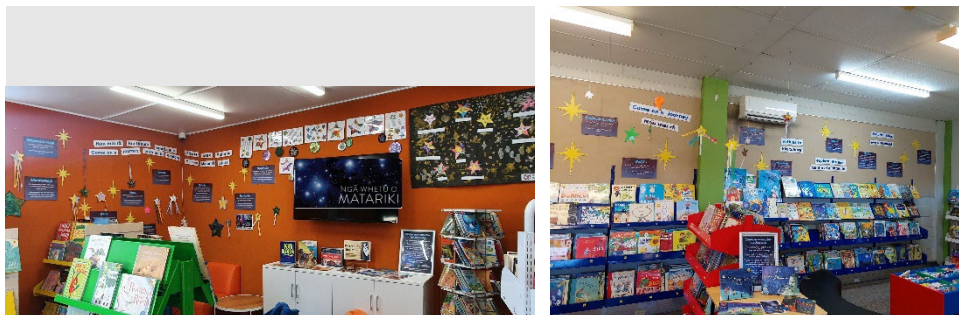
Crafternoons – The Libraries continue with weekly crafternoon sessions. These sessions provide a fun and creative space for children to create our weekly crafts. Activities such as create your own snake and hacky sacks are some of the activities offered.

DigiPlay – This programme provides our tamariki with the opportunity to have a go on something they may not have access to at home such as Play Station, iPads, VR and much more. These sessions operate from 3.30-4.30pm, giving kids a safe space after school in both.

Preserve Your Past – The library team are running Preserve Your Past every second week at the Waipawa Library. During these sessions community members are invited to bring in any documents or photos that they would like digitised and staff assist them with this. They are offered the option of sharing any of these items on the CHB Libraries' Recollect site <https://chbheritage.recollect.co.nz>

The Central Hawke's Bay District Libraries celebrated Matariki this year by holding a competition 'Design your own star' focusing on our younger library users. We encouraged them to join us and make a star from anything of their choosing and to be creative.

Here are some of the stars from the Waipawa Library and Te Huinga Wai .



The libraries in conjunction with the Community Op Shop and Sustainable Ewe have started a project to repurpose clothing that is not suitable for sale in the op-shop. Clothing is washed, dried and cut into A4 size pieces. These pieces are then sewn together to form quilts with old blankets and polar fleece used to back them. The libraries own several sewing machines and people can come together at both libraries on a fortnightly basis to cut and sew in a relaxed friendly group setting. The completed quilts are then offered back to the community at no cost. Community wellbeing is at the centre of this project along with keeping fabric out of the landfill. We are also running two sessions during the school holidays for our tamariki to also participate in this awesome initiative.

We completed the beginners Rāanga flax weaving program which was run from Te Huinga Wai over 6 weeks. The participants have thoroughly enjoyed all they have learned during this program and are eager to continue learning about harakeke in the near future. There are talks about an intermediate course with this group so hopefully this will come to fruition. The wāhine have gained confidence with harakeke and tikanga surrounding this beautiful craft and have gained new friends as well. We are happy to extend this programme out to our July School holiday Programme at the Waipawa Library and Te Huinga Wai.



Recently we have facilitated 2 Rongoā workshops at The Knowledge & Learning Hub - Te Huinga Wai and have had a lot of interest in them. Rongoā practices traditional Māori medicines including herbal balms and massage oils. One of the workshops was about infusing kawakawa leaves, peppermint and marjoram into olive oil to create a balm. This helps with sore muscles, joints, aches, and pains.

It has been incredible sharing this mātūranga Maori with our community and we hope to continue to offer these workshops in the future.

We held a lunchtime event Te Huinga Wai to launch Owen Clough's latest book 'Liquid Gold' The school holiday programmes have been a busy time in the libraries.

Children and adults had a marvellous time playing with the board games and jigsaw puzzles. Stories in the library, weaving and quilting for children, Matariki stories with Mary Kippenberger, gaming consoles,

CHB Town Centre Planning – supported by Streets for People

Central Hawke's Bay District Council continue to work with Waka Kotahi NZ Transport Agency and the Waipawa community to develop local solutions to improve the safety and connectivity of the main street of Waipawa.

Engagement with community occurred in June with a couple of walk and talks along the main street and an online survey.

Council presented our proposal to Waka Kotahi on 6 July. Proposals are being presented to Waka Kotahi by other councils around the country through to the end of this month. Waka Kotahi are scheduled to make funding announcements by September 2022.

Waipawa Streets For People.

Lets build on what we've heard from the Waipawa community.

'Slow the centre'

'See the highway as a hero'

'Pride in our environment and our people'

Projects

- 1 Slower Speeds in the Town Centre - Traffic calming interventions into Waipawa
- 2 Improved Walking and Cycling Connections Across SH2 - 3x Raised tables build outs and bike parking
- 3 Improved Walking and Cycling Connections at Key intersections
- 4 Improve access to Madge Hunter Park and Centennial Memorial Swimming Pool
- 5 Cycling on SH2 - Testing Cycling Options on SH2



HEALTH AND SAFETY OVERVIEW

Council's Health and Safety function remains focussed on a number of internal initiatives to mature and lift the approach to Health and Safety across the organisation.

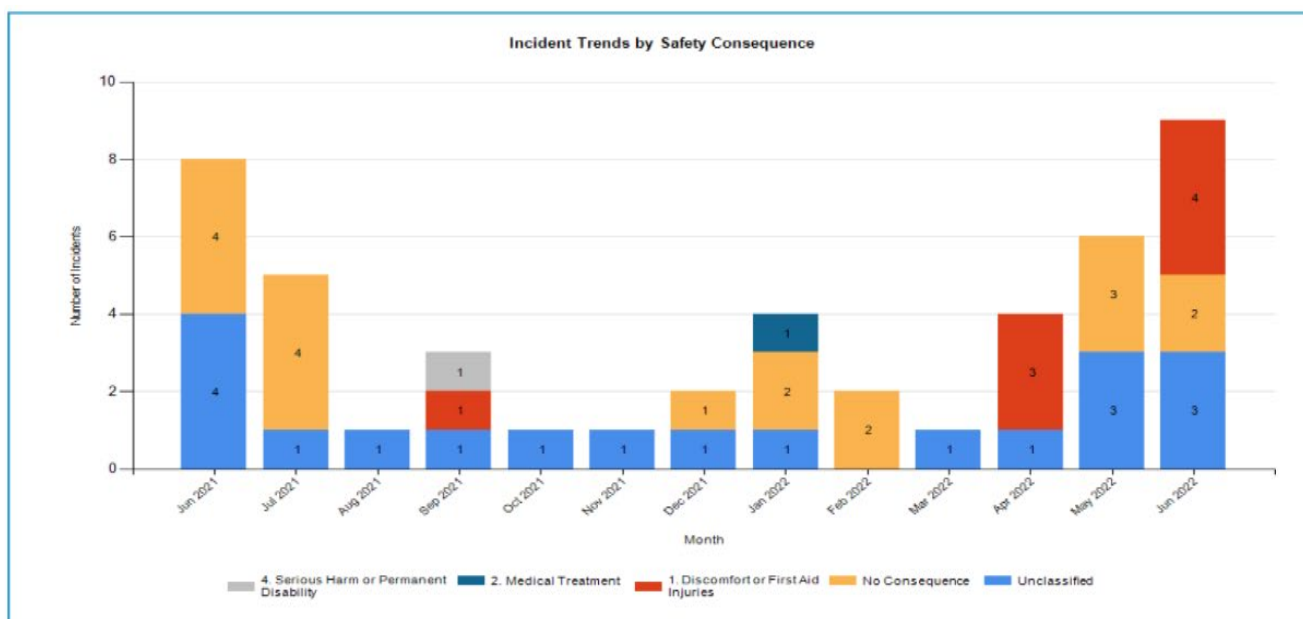
A key focus has been on lifting the profile and engagement of the Health and Safety Committee, made up of staff from across the organisation. The Committee has revised their terms of reference and is working to agree new priority areas and initiatives which will aim to address specific risk/opportunity areas but also seek to increase engagement in health and safety work from all staff and contractors.

The impacts of COVID on the organisation continue to use up resource and capacity with teams focussing on managing staffing levels internally and across a range of contracted work/projects. The number of staff out of the office due to having COVID or being a direct household contact remains fairly flat and within manageable limits but continues to require active management.

Work is continuing with the optimisation of the RiskManager Reporting System that was introduced last year. With a number of new staff joining council since April this year, it was timely to invest in updated training for key staff in the use of RiskManager. This will provide a platform and expertise for key CHBDC staff to provide on-going in-house training to our staff to enable them to confidently use Risk Manager at the level required. This will in turn set an easier and more logical transition for the introduction of new modules and reporting expectations within our teams and our contractors.

Contractor engagement and reporting has improved with the addition of Council's new Health and Safety Manager and her targeted focus on building relationships and understanding with our major contractor partners. Key statistics provided through routine contractor reporting are provided below.

	March	April	May	June	Trend
Contractor Hours	16,372	11,307.5	13,704.9	17,527	↑
Contractor Reports	67	78	78	121	↑
Contractor Incidents	3	4	11	11	→
CHBDC Reports	1	4	6	9	↑



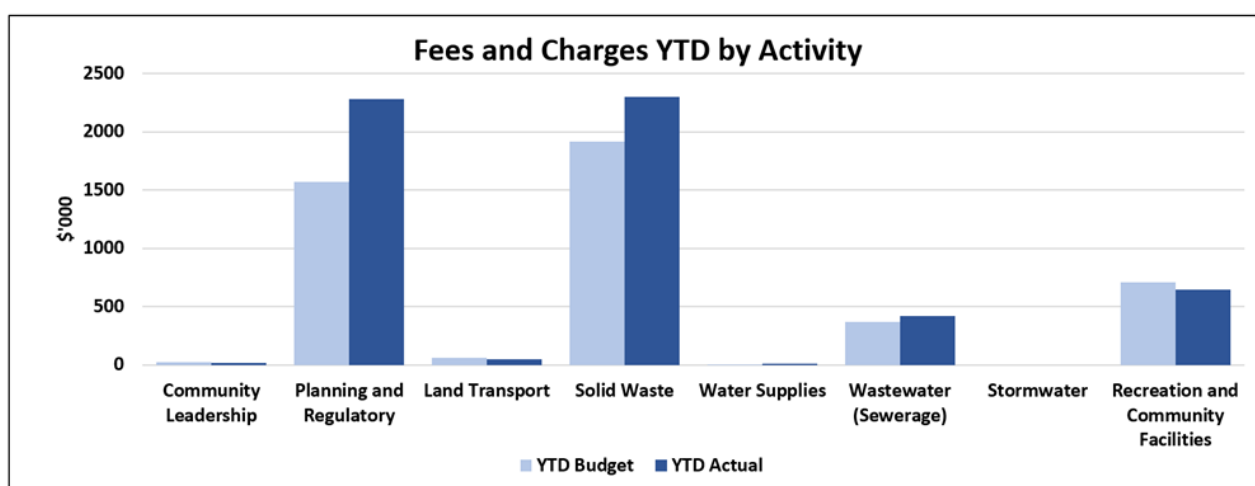
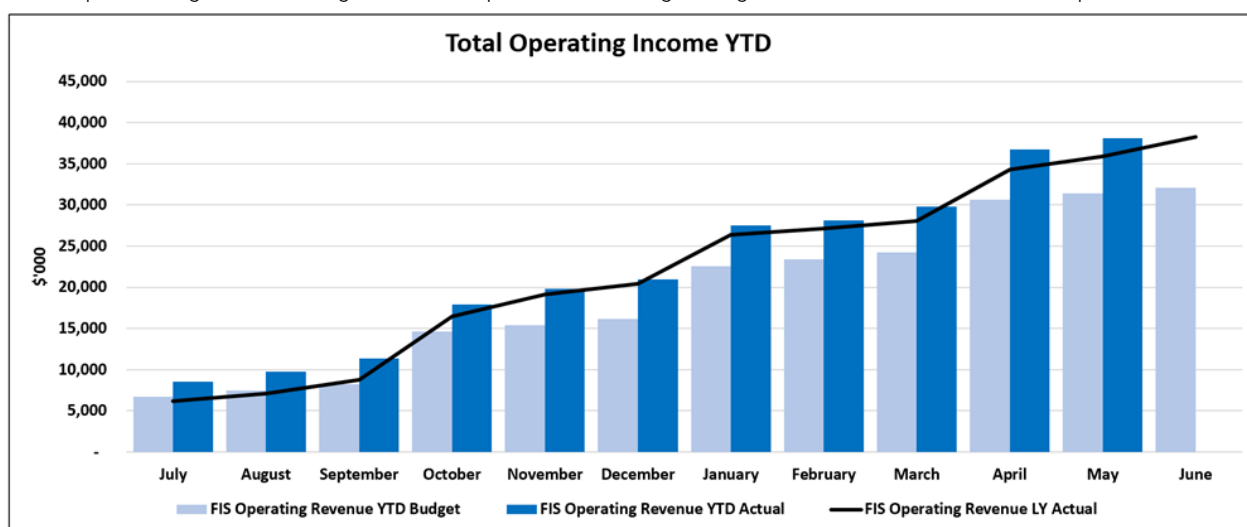
Financial

Performance

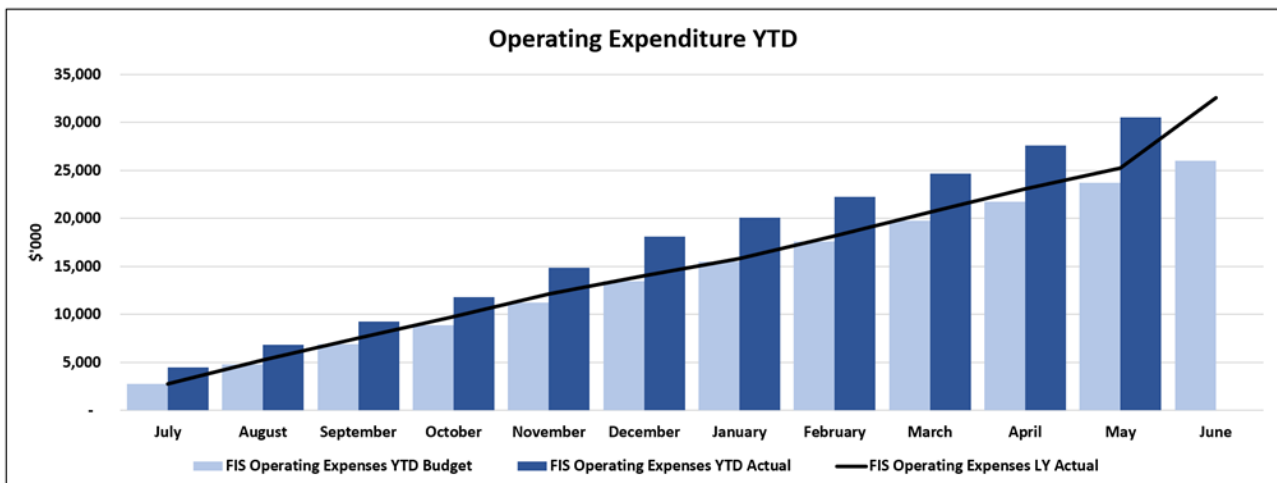
FINANCIAL PERFORMANCE ENDING 31 MAY 2022

The graphs and tables below show the financial results for Council covering the financial results for the 11 months ended 31 May 2022.

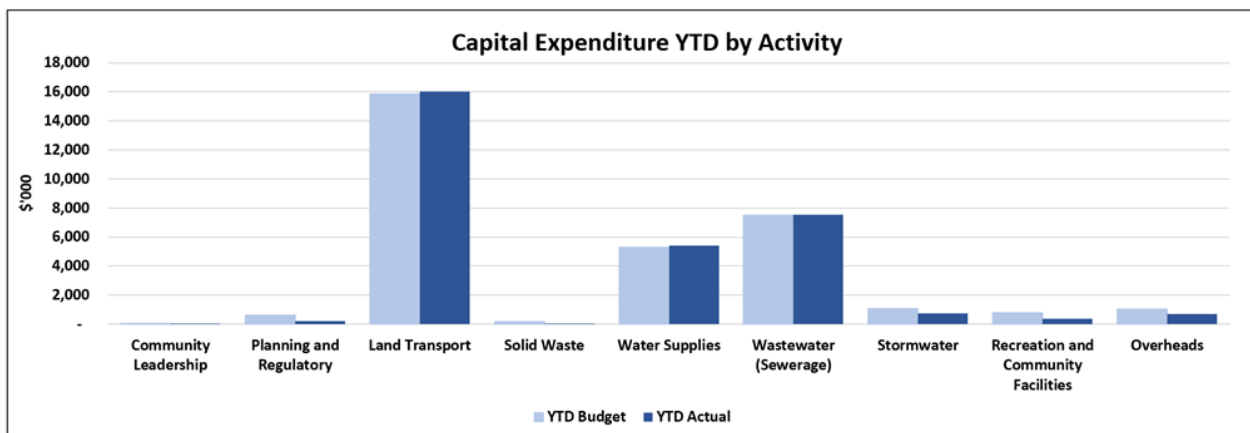
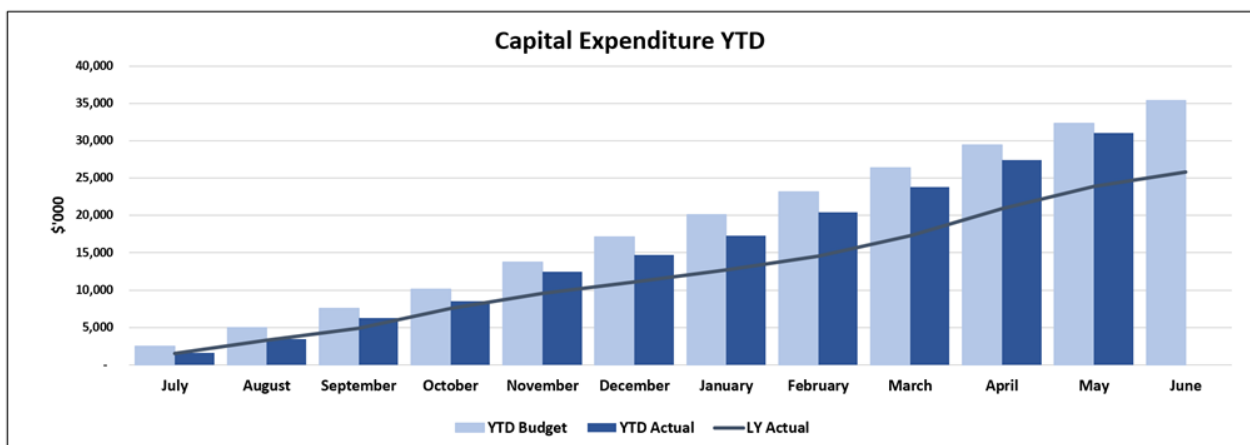
Council has now finished its financial year. Officers are in the process of completing year-end adjustments for valuations etc, what is being reported on here is the eleven months to 31 May 2022. The July revenue includes a reversal of \$3.7m of revenue in advance booked at year end (grants received pre-July 2021 but not spent at that point in time), which slightly distorts the figures (both revenue and expenditure). Consenting is still running ahead of budgets. Solid waste is distorted by Council processing internal charges for the disposal of the sludge being removed from the wastewater ponds.



The operating expenses look high compared to budget, but this is due to Council spending grants received (tranche one 3 Waters and COVID Economic Recovery projects), additional costs of consent processing and consent consultancy costs (includes some design work that will be covered by future developer agreement income), additional volume through our landfill (carbon credits in particular) and the start-up costs of the new extended recycling services.



Capital spend is running slightly behind budget, mainly in stormwater, the pound construction, and renewals of community facilities. The stormwater budgets will be carried forward and combined with next years budgets, the pound is still in the design/consenting phase, and the community facilities were waiting on the community plans to be finalised. In the land transport area we are seeing the repair work for the weather events and the Kairakau Road slip hitting our accounts. Given that the contractors doing this weather related work are the same contractors who do Council's planned maintenance, we are having to delay some planned work.



#the BIG. Waste Water Story

#the BIG. Water Story

#TheBigWaterStory programme of work, and the **Waipukurau Second Supply** received a decision in May 2022. With formal landowner agreements well progressed, most pipeline and reservoir due diligence complete. A consent onhold for geotechnical investigations either side of the river, options assessed for crossing the rivers. The production bore drilled and test, and replacement of the AC main out of the bore-field (tagged as Stage 1) is complete. Stage 2 and 3 is well underway with approx. 2.4km complete. The next stage for this project is committing to an option to take further into construction.

Alongside the Waipawa and Waipukurau project upgrades – works are commencing on planning for upgrades of the future reservoir upgrades and replacement – with the Waipawa reservoirs proposed to be replaced and upgraded first. Landowner negotiations and design for these progressing well.

Significant mains upgrades are in place across Tikokino and Abbotsford Roads as part of the firefighting and Waipawa to Waipukurau Water Supply project. Porangahau Road is due to start in the next week as we replace a section of aged main

The **Kairakau Water Supply Upgrade** is progressing with the award occurring in November 2021 and all ontrack for offsite fabrication in April 2022, and onsite installation from June 2022, aiming for completion by November 2022.

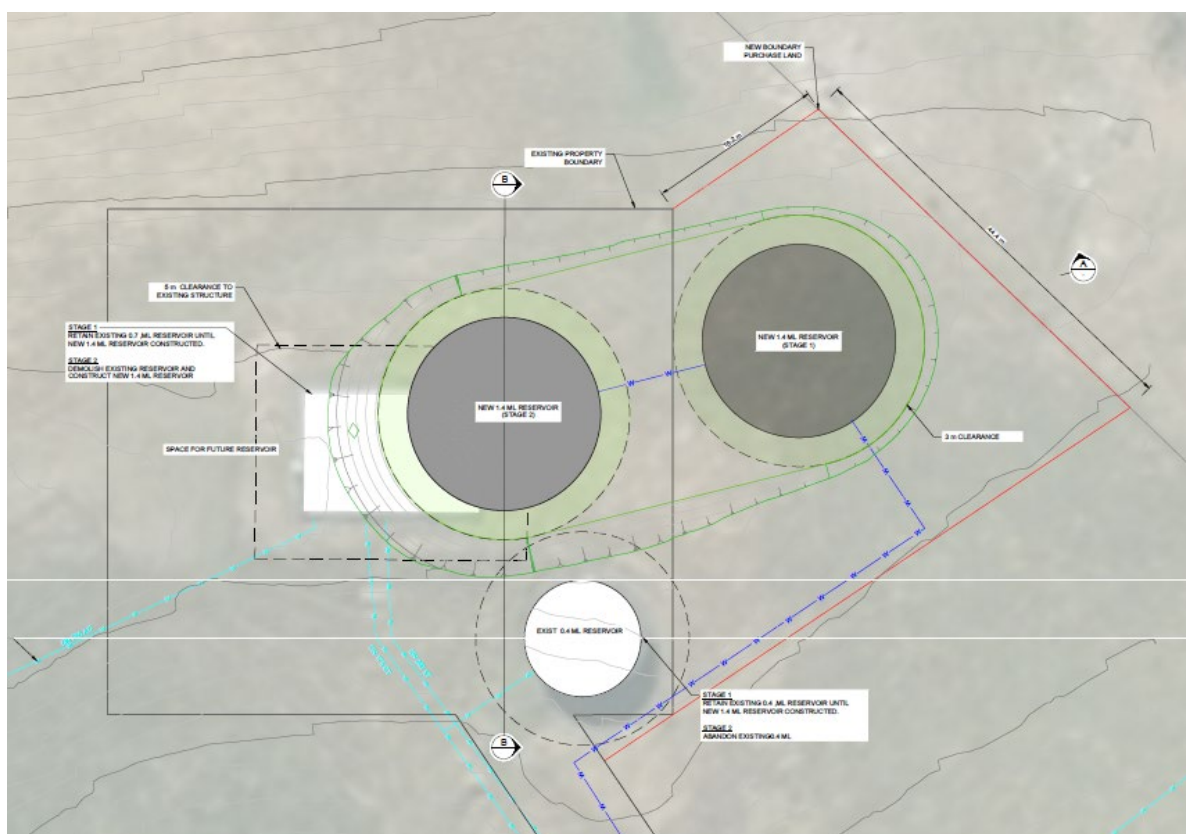


Figure 1: Outline of the reservoir replacement in Waipawa

#TheBigWastewaterStory programme has advanced over the last few months, with Stage Two of the Otane to Waipawa Wastewater Pipeline nearing completion. Stage Three is complete - linking the end of Stage 1 works at Racecourse Road/White Road to the Ōtāne Treatment Plant. The Ōtāne pump station is underway and construction of Stage 5 underway awaiting some key valves to complete – expected in August 2022.



Otane Pump Station – awaiting pumps and pipework

Waveband repairs at the Waipukurau wastewater plant are complete and Waipawa repairs complete.

TRANCHE ONE – 3 WATERS REFORM PROGRAMME

Council identified a number of projects as part of the 3 Waters reform programme tranche one – below is a brief update on the programme –



Proudly Supported by
New Zealand Government
Te Kāwanatanga o Aotearoa

Officers are due to submit Q6 report in April 2022, to date just over \$10.7m of our \$11.09m has been spent and all of our projects within the programme are committed and planned to be delivered within timeframes. Due to COVID-19 DIA has allowed an extension to June 2022.

- **Regional 3 Waters** – work is underway with other councils to identify and understand private water supplies, as part of a private water supply identification regional project, which may include a contingency fund to assist private water supplies – another project in planning is to investigate work required to synergise a regional engineering code of practice to assist our supply partners working in Hawke's Bay.
- **Water Safety Planning** – source protection mapping and catchment risk assessment work is underway to support our water safety plans. A Sustainable Water Management Plan has been developed and [can be viewed here](#).
- **Otane to Waipawa Pipeline Stage 2** – the pipeline is well underway as documented above with 8.7 of the 8.8km pipeline installed and we are now progressing into Stage 5.
- **Waipukurau Second Water Supply** – Borefield is complete and Tikokino Road Stage 1 pipe replacement is complete, Stage 2 and 3 underway, design well progressed – future decisions to be made about the project.
- **Wastewater Treatment Improvements** – DAF system install underway, commissioned in May 2022
- **Wastewater Desludging** – Dry solids removal complete at Waipawa and Waipukurau, desludge complete at Waipawa, Waipukurau desludge complete
- **Bylaw Reviews** – Updated bylaws were adopted on May 13 2021, work is underway on implementing the changes
- **Trade Waste** – Trade Waste consents underway and issued in Dec 2021, ongoing engagement and improvements.
- **Water Renewals** – a project to renew water mains is complete in Waipukurau across Nelson and Reservoir roads – A stormwater upgrade is complete.. Another renewal project is underway on Tikokino and Abbottsford Roads in Waipawa.
- **Wastewater Renewals** – this fund is focussed on expediting our I&I programme, starting with physical works in Otane and studies in other towns – these studies are now well underway with quarter of the network investigated.
- **Programme Management** - a new project management software is now live and supporting the programme, and a 3 waters monitoring and wider infrastructure consent management tool is being rolled out to support operational compliance and visibility.
- **Kairakau Water Upgrade** - \$300k was reallocated to increase the budget and scope for Kairakau water upgrade, these works are well underway.



Figure 2: Kairakau Water System – Site Preparation

PGF ROADING PROGRAMME – PŌRANGAHAU TO WIMBLEDON

PHASE	DESIGN/ BUILD	
TIMELINE	JAN 2020 START DATE	AUGUST 2022 END DATE
PROGRESS	80%	
BUDGET	Total Budget \$20.1m Spend to Date: \$17.8m	
RISKS		

Scope

To upgrade Pōrangahau and Wimbledon Roads to improve safety and resilience along Pōrangahau Road from Waipukurau to the Tararua border on Wimbledon Road.

The Contractor

Stantec and Council have been delivering the design, procurement and contractor supervision of this significant programme of work.

We now have four different contractors onboard to deliver the main components of this programme, Concrete Structures, Fulton Hogan, Downer and Russell Roads.

Funded through the PGF by MBIE – the programme is well underway, and we can expect to see significant construction through to completion in August 2022.

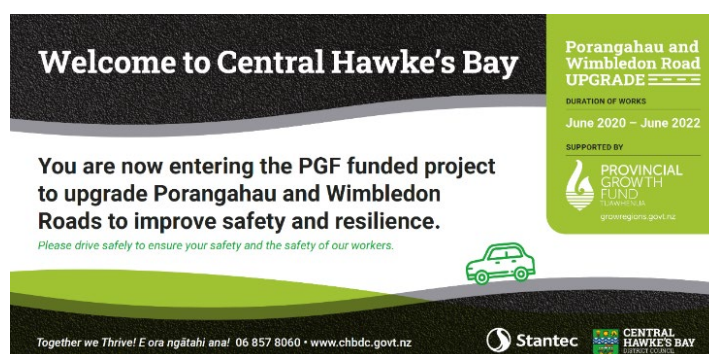
Communications

An interactive map has been created and can be visited here:

https://experience.arcgis.com/experience/947a211cafb4a96a063fcd1e8d3a461/page/page_10/

Webpages for the programme and individual projects can be found here: <https://www.chbdc.govt.nz/our-district/projects/porangahau-wimbledon-road-upgrade/>

Employment Statistics to Date



Progress Update

2022 has seen the programme ramp into action, with a significant amount of construction underway across the programme.

- 3 bridge sites are complete
- 2 sites at Flaxmill/ Wanstead, with consent granted.
- Lower Wimbledon Retreat underway and
- 3 other retaining wall sites complete
- Slow Vehicle Bay and Safety Improvements complete.

The programme was impacted by the March 2022 rain event with rising river levels impacting works and causing some delays and clean up as waters and debris impacted under construction projects.

This has caused some pressure on the programme, and Kanoa/ PGF have granted an extension to 30 August 2022 to complete the program

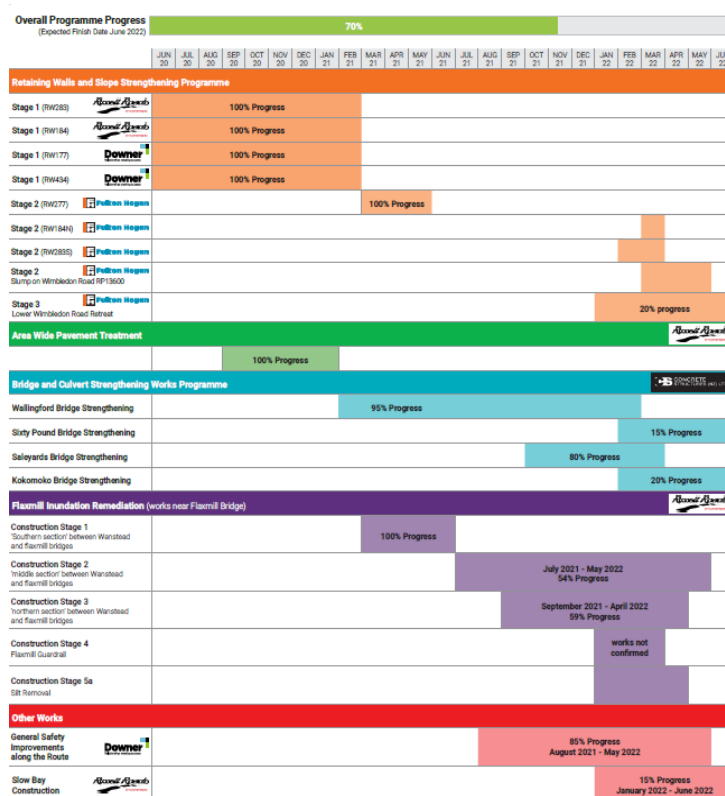


Figure 3: Lower Wimbledon Retreat

C1096 – Bridge Programme (Kokomoko): Guardrail installation completed on upstream and downstream side. Traffic to be diverted to new bridge w/e 1 July. Blessing held 29 June. Shoulder reinstatement works and temporary bridge approach reinstatement works commencing.



C1097 – Flaxmill Inundation Remediation Project (SP2): Edge marker posts installed, and farm access completed.



Figure 4: Flaxmill Bridge clearing and silt removal






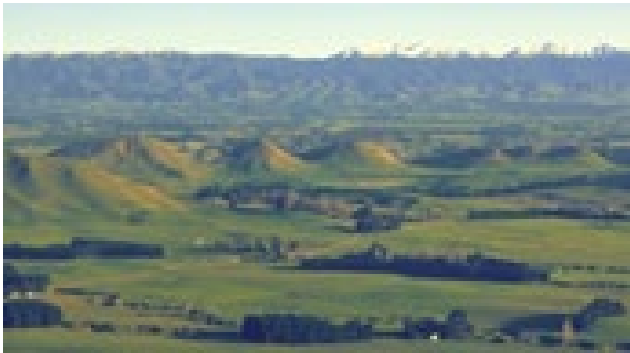









C1098 – Retaining Walls (Lower Wimbledon Retreat): Earthworks and drainage works 90% complete. Continued installation of subsoil drains (VO). Installation of inclined drains commenced.








C1098 – Retaining Walls (RW13600): Installation of Soil Nails completed. Soil nail testings and mesh installation to commence.



DISTRICT PLAN REVIEW	
<div> <div>PHASE</div> <div>Hearings underway</div> <div>      </div> </div>	
<div> <div>TIMELINE</div> <div> <div>AUG 2012</div> <div>START DATE</div> </div> <div> <div>March 2022</div> <div>HEARINGS BEGIN</div> </div> </div>	
<div> <div>PROGRESS</div> <div>80%</div> <div>  </div> </div>	
<div> <div>BUDGET</div> <div> <div>Total Budget</div> <div>\$3.5m</div> <div>Spend to Date:</div> <div>2.5m</div> </div> <div>    </div> </div>	
<div> <div>RISKS</div> <div>    </div> </div>	
<div> <div>Scope</div> <div> <p>The review has now progressed to the phase of undertaking the formal Resource Management Act statutory hearings. Submitters to the District Plan Review have the opportunity to formally submit their views on the topics contained within their written submissions to a Panel of Commissioners appointed by Council.</p> </div> </div>	<div> <div>The fourth hearing will take place from 10-12 August 2022 in Council Chambers, where submitters will be invited to talk to their submissions on sections and provisions in the plan pertaining to Tangata Whenua matters and Historic Heritage.</div> </div>
<div> <div>Progress Update</div> <div> <p>Three hearings have been undertaken this year. Hearing Stream 1 and 2 occurred during March and Hearing Stream 3 during June. The topics covered were the Natural and Coastal Environment (hearing 1), the Urban Environment, Sustainability, and General District Wide Matters (hearing 2), and the Rural Environment (hearing 3).</p> </div> </div>	<div> <div>It is anticipated that hearings will be completed before the end of the year. Following the hearings, the Panel will make decisions and recommend a new District Plan for Council to adopt in the first half of 2023.</div> <div> <p>Following each hearing the Panel releases a memorandum covering post-hearing activities to be undertaken by Council's reporting officers, experts and or submitters, to further inform the Panel's deliberations and decisions</p> </div> </div>

POUND PROJECT

PHASE	DESIGN	    
TIMELINE	JUN 2018 START DATE	DECMEBER 2024 (TBC) END DATE
PROGRESS	15%	<div><div></div><div></div><div></div><div></div><div></div><div></div><div></div><div></div><div></div><div></div></div>
BUDGET	\$700k TOTAL PROJECT	<div><div></div><div></div><div></div><div></div><div></div><div></div><div></div><div></div><div></div><div></div></div>
RISKS		<div><div></div><div></div><div></div><div></div><div></div><div></div><div></div><div></div><div></div><div></div></div>



Scope

To build a purpose-built Pound Facility for Central Hawke's Bay that meets:

- Ministry for Primary Industry (MPI) standards and;
- The needs of the community now and into the future.

Progress Update

Building consent was submitted mid-April and has been approved. The procurement plan has been finalised and Request for Tender is due to be released on GETs prior to the end of July.

A further update on timeframes will be able to be provided once the procurement process has been completed.

The Customer Relationships and Experience Manager is continuing to manage the relationship with the SPCA in the interim.